

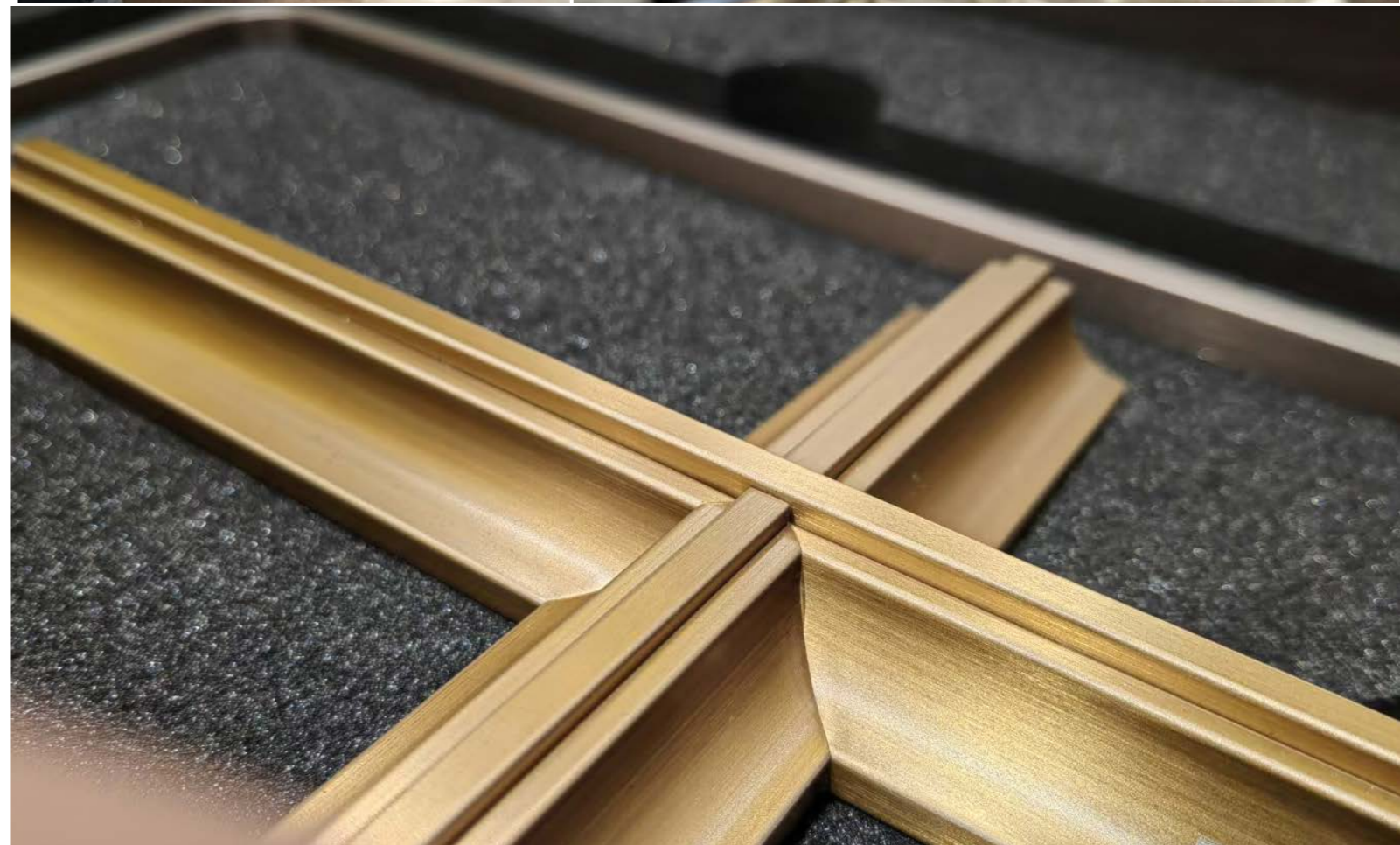
#2

WATER RIPPLE SHEET

High-end decorative stamped sheet

About us

Established in 2011, Foshan H&N Decoration metal Material Engineering Co., Ltd. is a specialized enterprise that provides decorative stainless steel sheets, sheet metal processing, metal structure fabrication, and metal decoration engineering. We create architectural metal products for illuminating industry, hospitality, commercial, workplace, transportation, entertainment, and retail markets, for twelve years, we have successfully helped architects, designers, contractors and homeowners to provide stainless steel materials and total solutions that meet project requirements and budgets.



STARTED BUSINESS

Mr.Peng Shihong and Ms.Wang Baowei founded the LaoPeng Metal Material Shop in Zhongshan city

2011

OPEN MIRROR POLISH FACTORY

We have 6 flat plate production lines and 8 coil strip production lines. We are able to provide our customers with plates/coils with different surface effects such as 8K, fine grinding and super fine grinding.

2014

OPEN LASER CUTTING FACTORY

Start metal work processing such as laser cutting 、 Welding 、 PVDcoating 、 Fabrication 、 Assembling Stations

2019

OPEN H&N DECO METAL

Provide one stop solution metal work for customers around the world

2022



Qualifications and Experience

- Third Grade National Architecture Decoration Enterprise and authorized by ISO 9001/2000.
- One of the earliest and the largest manufacturers in China offering all the specialized and standard surface finishing processing.
- Twelve years' specialized production experience, with the ability to control the whole processes, to guarantee the quality and cost, as well as quick delivery.



**Mirror polishing
Factory(Foshan)**
Address : No.72 (F5),
North District, Foshan
Electronic and Electrical
Industry Base, Baini Town,
Sanshui District, Foshan
City, Guangdong Province,
China



**Laser cutting
Factory(Zhongshan)**
Address : Gusan
Venture Park, Northeast
4th Road, Industrial
Avenue, Zhongshan City,
Guangdong Province,
China



**Decometal material
shop(Zhongshan)**
Address : F1, Zhenglian
Shopping Plaza, No.138
Zhongxing Avenue North,
Guzhen, Zhongshan City,
Guangdong Province,
China

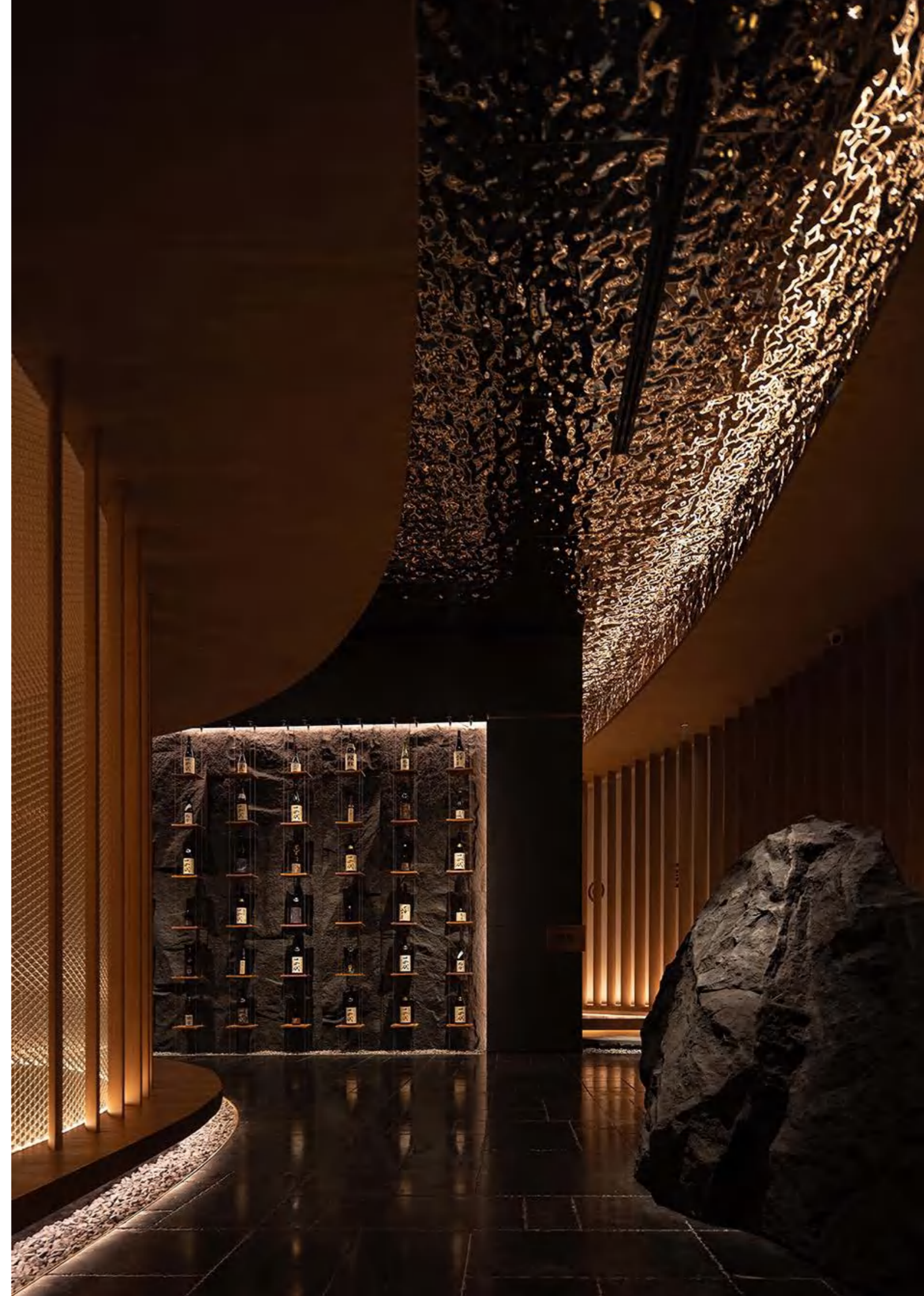
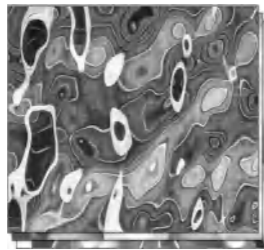
WHY CHOICE US:

- 1.Factory Direct: We have two metal products processing plants and one offline metal sales center in China with a total area of 8,000m²,Factory direct sales make the price and quality more advantageous
- 2.Quality Control: We build a powerful supply chain,We have a material inspection team to make sure what we receive the material with every decent quality
- 3.Material Diversity: We are one of the largest suppliers of metal materials patterns in the Chinese market.Variety of materials for your design options
- 4.Custom-made Service: We have a professional design team with an average of more than 4 years of design experience.In addition to our standard metal sheet products, we also provide our customers with professional customization services

Water ripple sheet

Stainless steel water ripple sheet is a common decorative stainless steel material. Usually, it is on the basis of stainless steel mirror plate, stamping through the mold, so that the stainless steel plate deformation, resulting in uneven, similar to the water ripple pattern of three-dimensional pattern. It is widely used for indoor and outdoor ceiling and wall decoration, and is one of the most popular deco materials for designers.

Application: Ceiling | Wall cladding etc.



Materials

Stainless steel decorative sheet is a type of sheet metal that is made from stainless steel and is designed to be visually appealing. It is often used in interior and exterior decorative applications where both durability and aesthetic appeal are desired. H&N DECO METAL Stainless steel decorative sheets come in a variety of colors, patterns, and thicknesses, making them versatile materials for a wide range of design applications. They can be used for decorative wall panels, elevator interiors, kitchen backsplashes, and many other architectural and design projects.

Technical parameters

	Chemical Composition (%)								Tensile Test			Hardness Test	
	C	Si	Mn	P	S	Cr	Ni	Cu	0.2% Y.S(Mpa)	T.S(Mpa)	EL(%)	HRB	HV
201/J1	≤0.150	≤0.80	7.50 - 11.00	≤0.05	≤0.008	12.00 - 16.00	0.90 - 2.00	0.70-1.50	≥300	≥700	≥40	≤101	≤260
201/J2	≤0.200	≤0.80	7.50 - 11.00	≤0.060	≤0.030	12.00 - 16.00	0.80 - 2.00	≤1.00	≥300	≥700	≥40	≤102	≤270
304	≤0.070	≤0.75	≤2.0	≤0.045	≤0.030	18.00 - 20.00	8.0 - 10.5	-	≥205	≥520	≥40	≤90	≤200
304L	≤0.030	≤0.75	≤2.0	≤0.035	≤0.030	18.00 - 20.00	9.0 - 13.0	-	≥175	≥480	≥40	≤90	≤200
316	≤0.080	≤1.0	≤2.0	≤0.045	≤0.030	16.00 - 18.00	10.0 - 14.0		≥205	≥520	≥40	≤90	≤200
316L	≤0.030	≤1.0	≤2.0	≤0.035	≤0.030	16.00 - 18.00	12.0 - 15.0		≥175	≥480	≥40	≤90	≤200
410	≤0.15	≤1.0	≤1.0	≤0.035	≤0.030	11.50 - 13.50	-		≥205	≥440	≥20	≤93	≤210
430	≤0.12	≤0.75	≤1.0	≤0.040	≤0.030	16.00 - 18.00	≤0.60		≥205	≥450	≥22	≤88	≤200

Product details

Thickness	Panel Sizes	Single Pattern
0.3mm-3.0mm	2440mmX1220mm	50mm-120mm
	3050mmX1220mm	Pattern Depth
	2000mmX1000mm	2mm-6mm
	3000mmX1500mm	
	Customized	

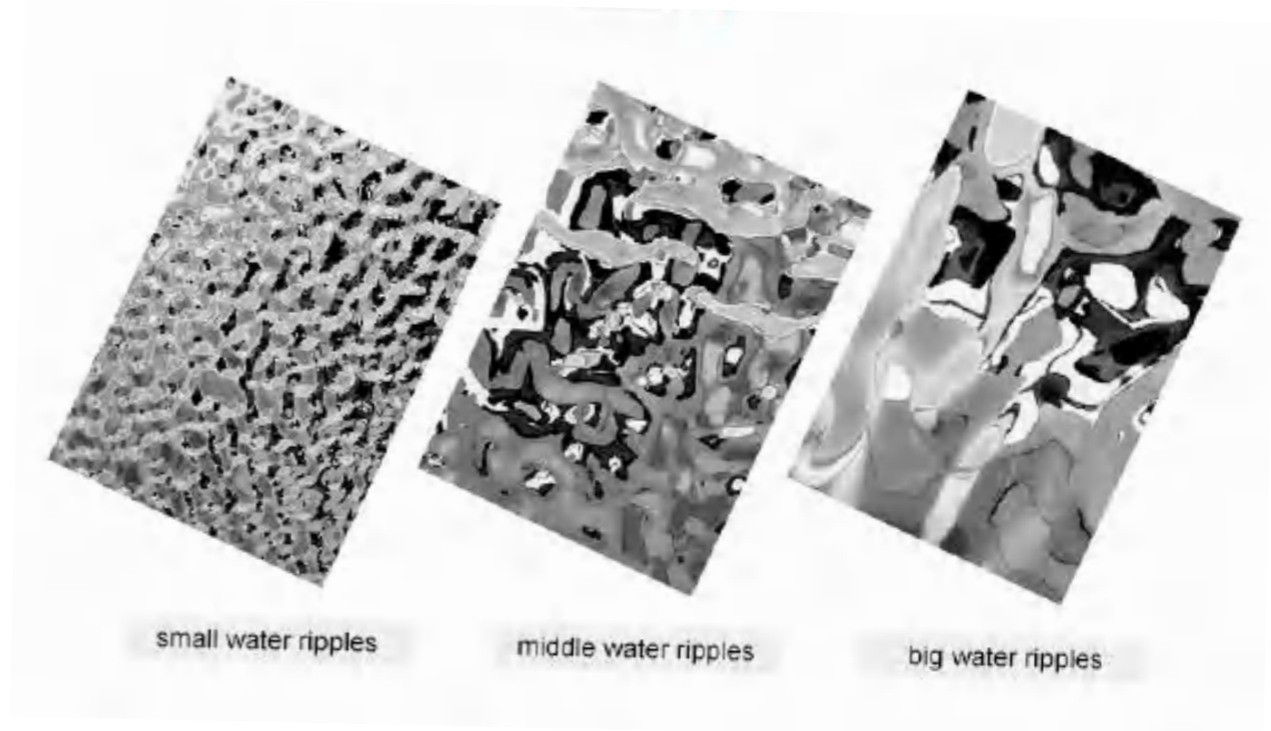
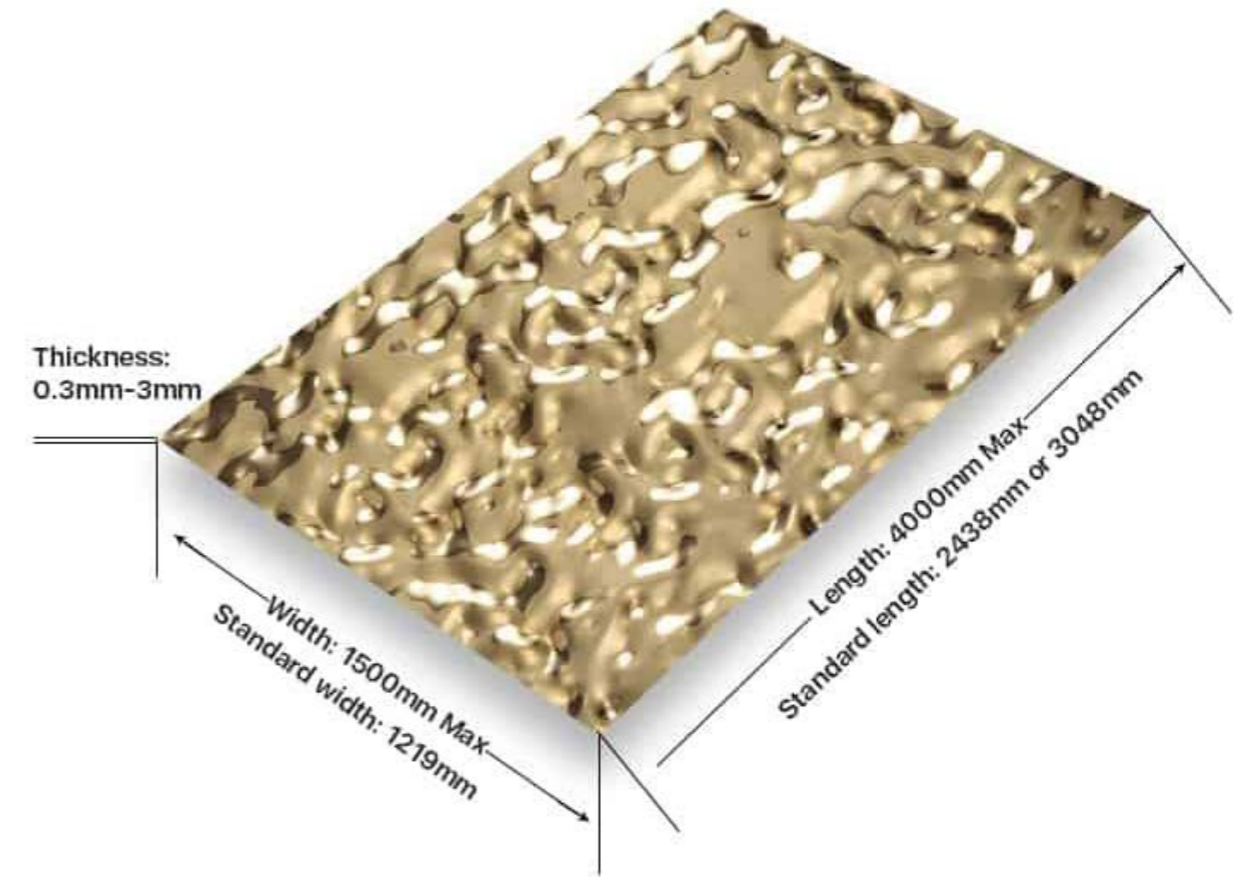
Touch: Smooth, Unevenness, Crinkle

Visual: Shimmeringly, Sparklingly

Application Scenarios: Ceiling, cladding, art metal, etc.

Advantages:

- Durable and not deformed: The metal has excellent structural properties, and the material is not easily corroded.
- environmentally friendly: no harmful gas emissions
- Fire safe:(no fire ignition, no spread of fire)
- strong: rigid panels
- Simple installation: We can support the mature keel hoisting system, which is convenient for on-site installation.
- Good decorative performance:small, middle, large pattern for your choice,Customization accepted
- Low price:Factory direct supply, better prices



Color choice

General colors: Silver | Gold | Rose Gold | Blue | Black



Other color choice ----PVD Coating color

PVD (physical vapor deposition) coating, also known as thin-film coating, is a process in which a solid material is vaporized in a vacuum and deposited onto the surface of a part.

Equipment Selection: We have the most advanced color coating equipment—Horizontal And Vertical PVD coating equipment.



These are our regular colors, for more colors, please download our catalogue
Accept color customization, similarity can be more than 90%

Colorful PVD Coating





HN-SW-9210



HN-SW-9211



HN-SW-9212



HN-SW-9213



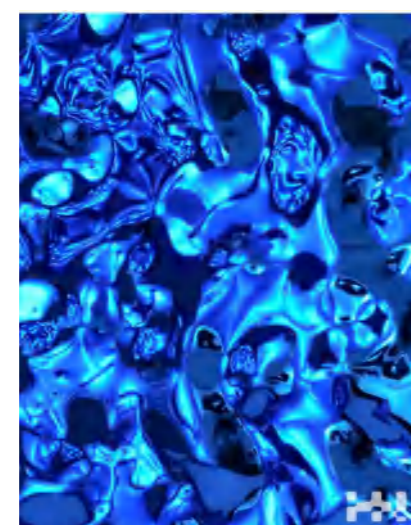
HN-SW-9214



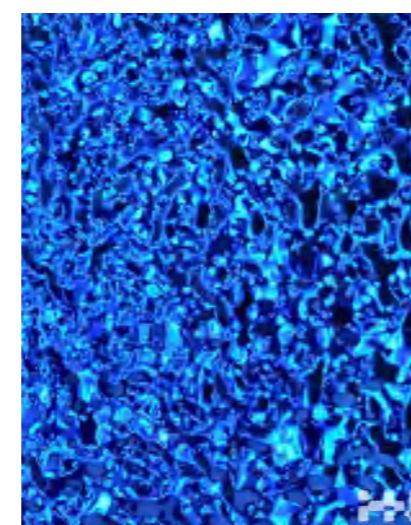
HN-SW-9215



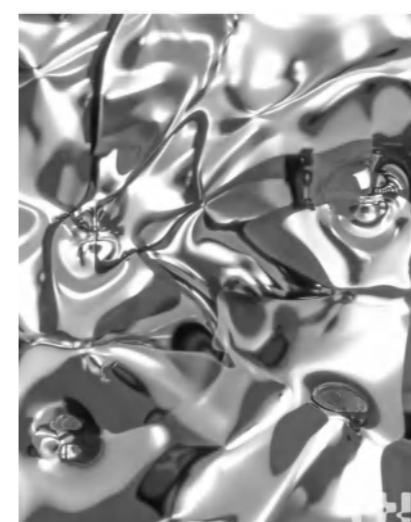
HN-SW-9216



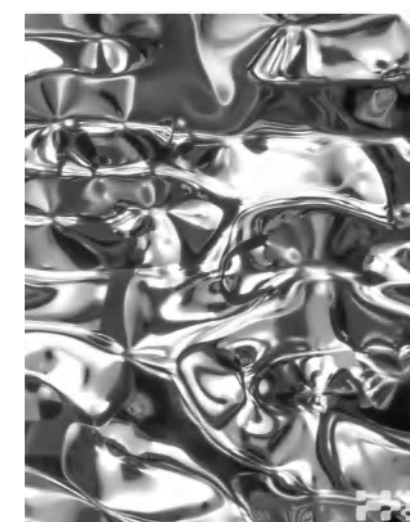
HN-SW-9217



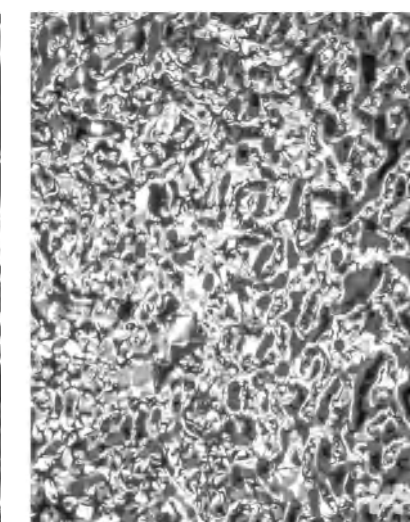
HN-SW-9218



HN-SW-9219



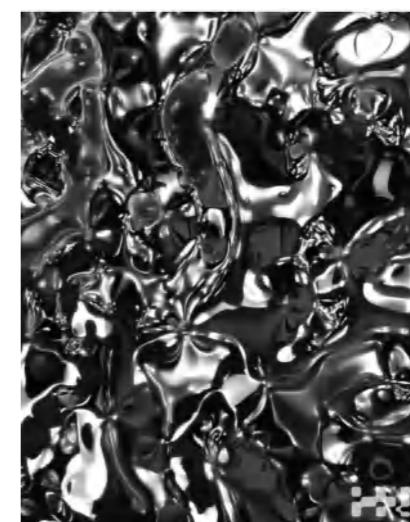
HN-SW-9220



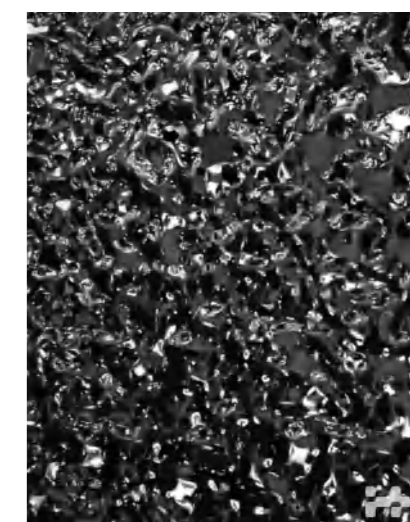
HN-SW-9221



HN-SW-9222

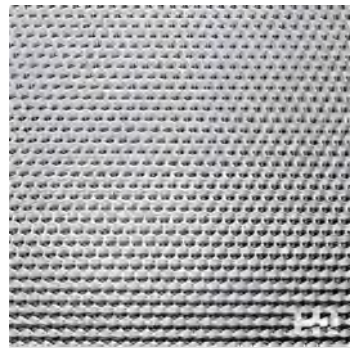


HN-SW-9223

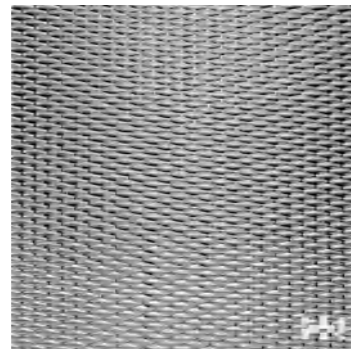


HN-SW-9224

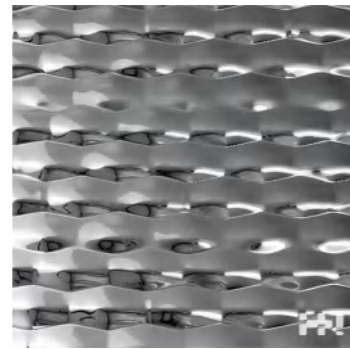
Other Stamping Pattern



HN-SS-9101



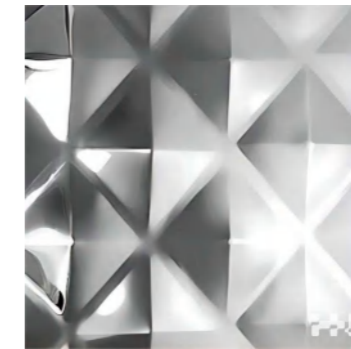
HN-E-SS-9102



HN-SS-9103



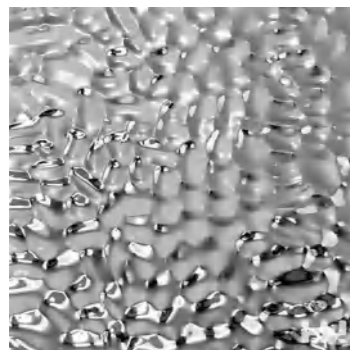
HN-SS-9113



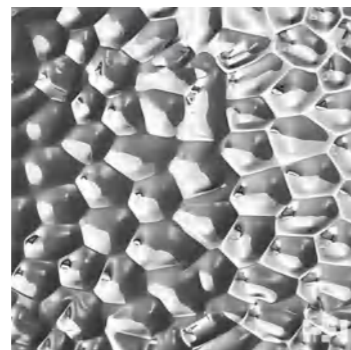
HN-SS-9114



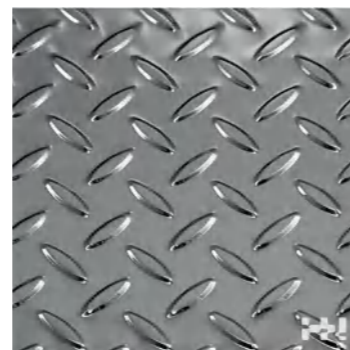
HN-SS-9115



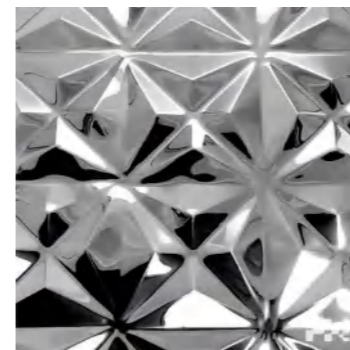
HN-SS-9104



HN-SS-9105



HN-SS-9106



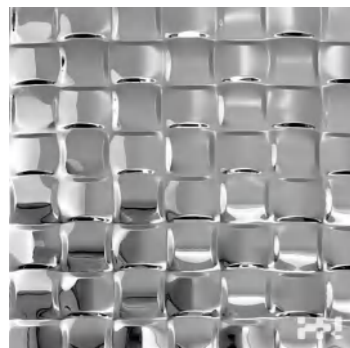
HN-SS-9116



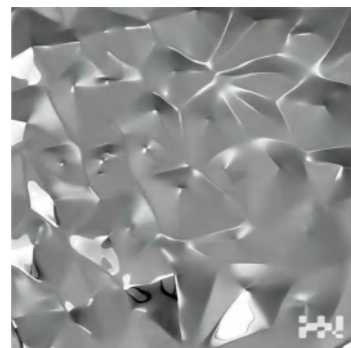
HN-SS-9117



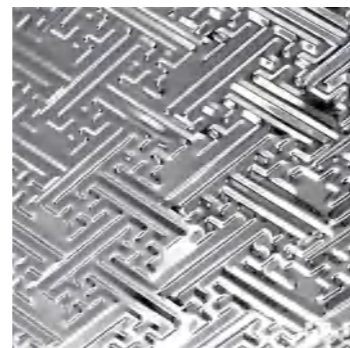
HN-SS-9118



HN-SS-9107



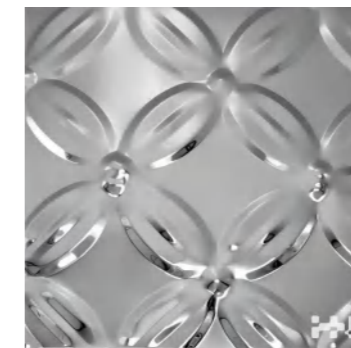
HN-SS-9108



HN-SS-9109



HN-SS-9119



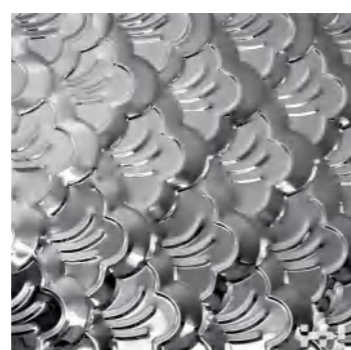
HN-SS-9120



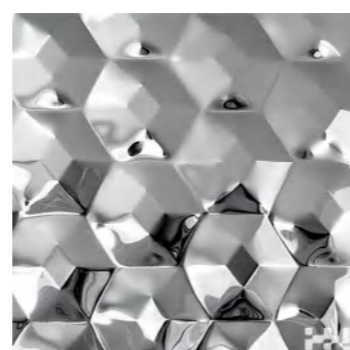
HN-SS-9121



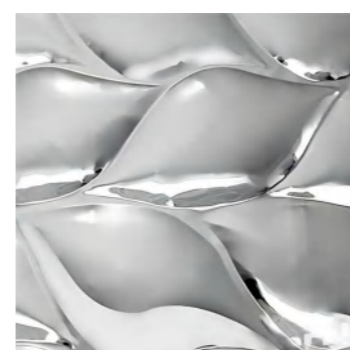
HN-SS-9110



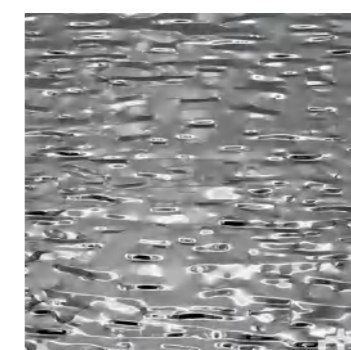
HN-SS-9111



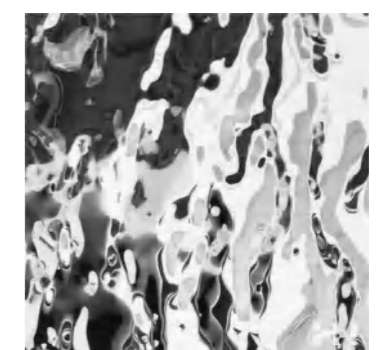
HN-SS-9112



HN-SS-9122



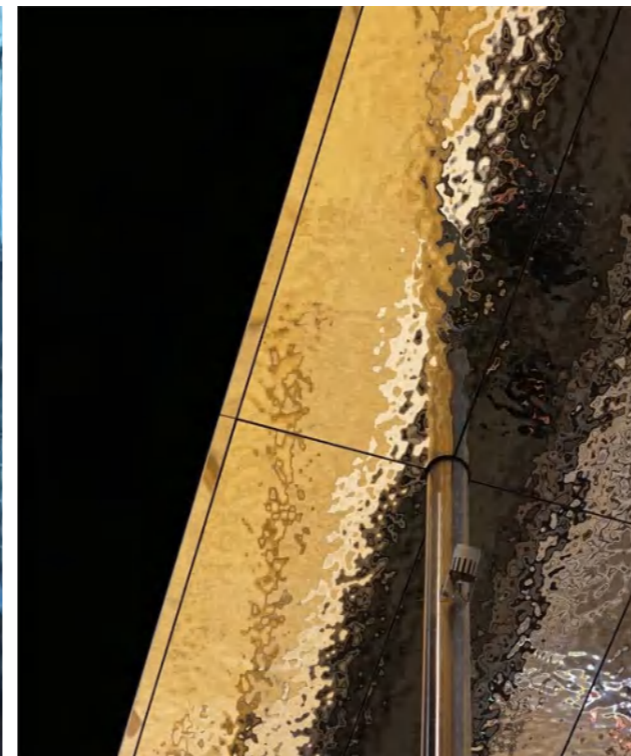
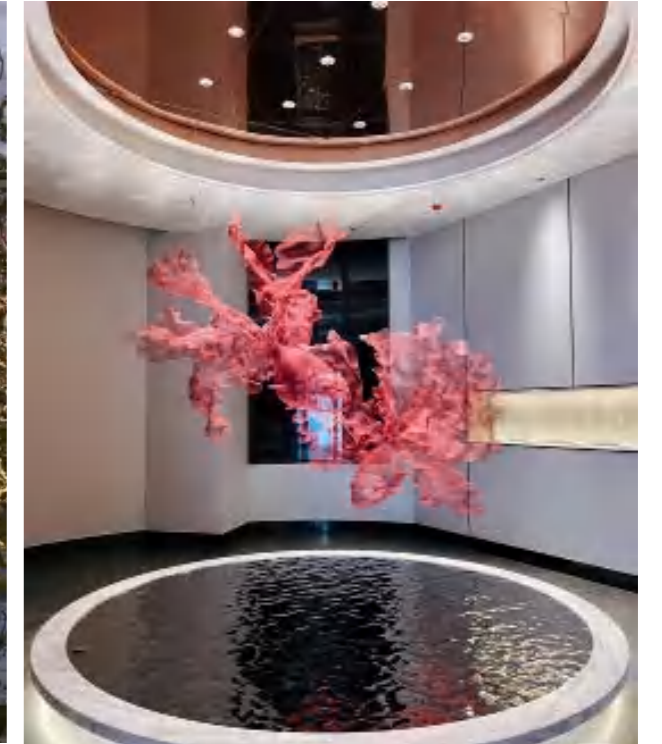
HN-SW-9225



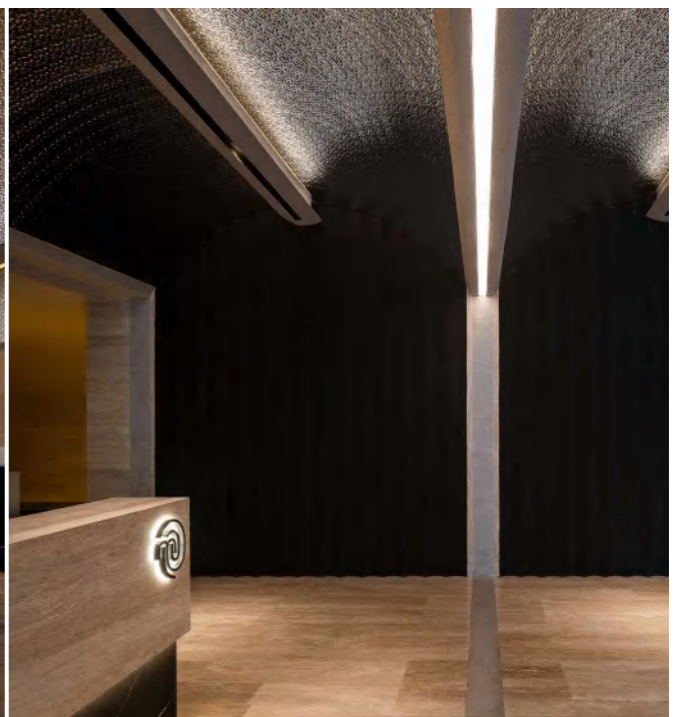
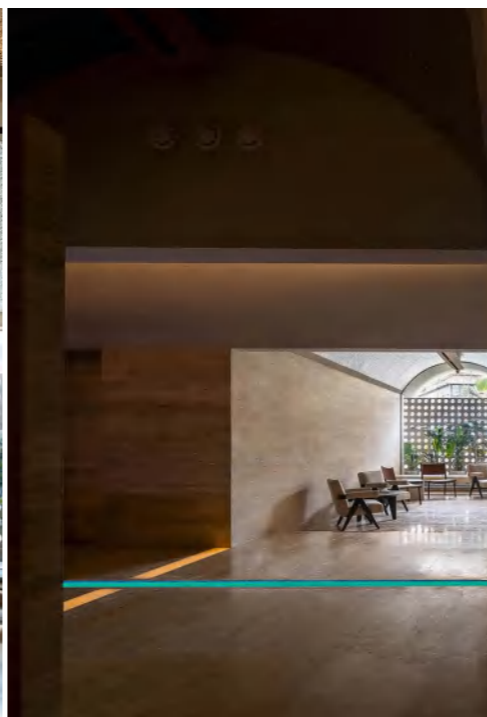
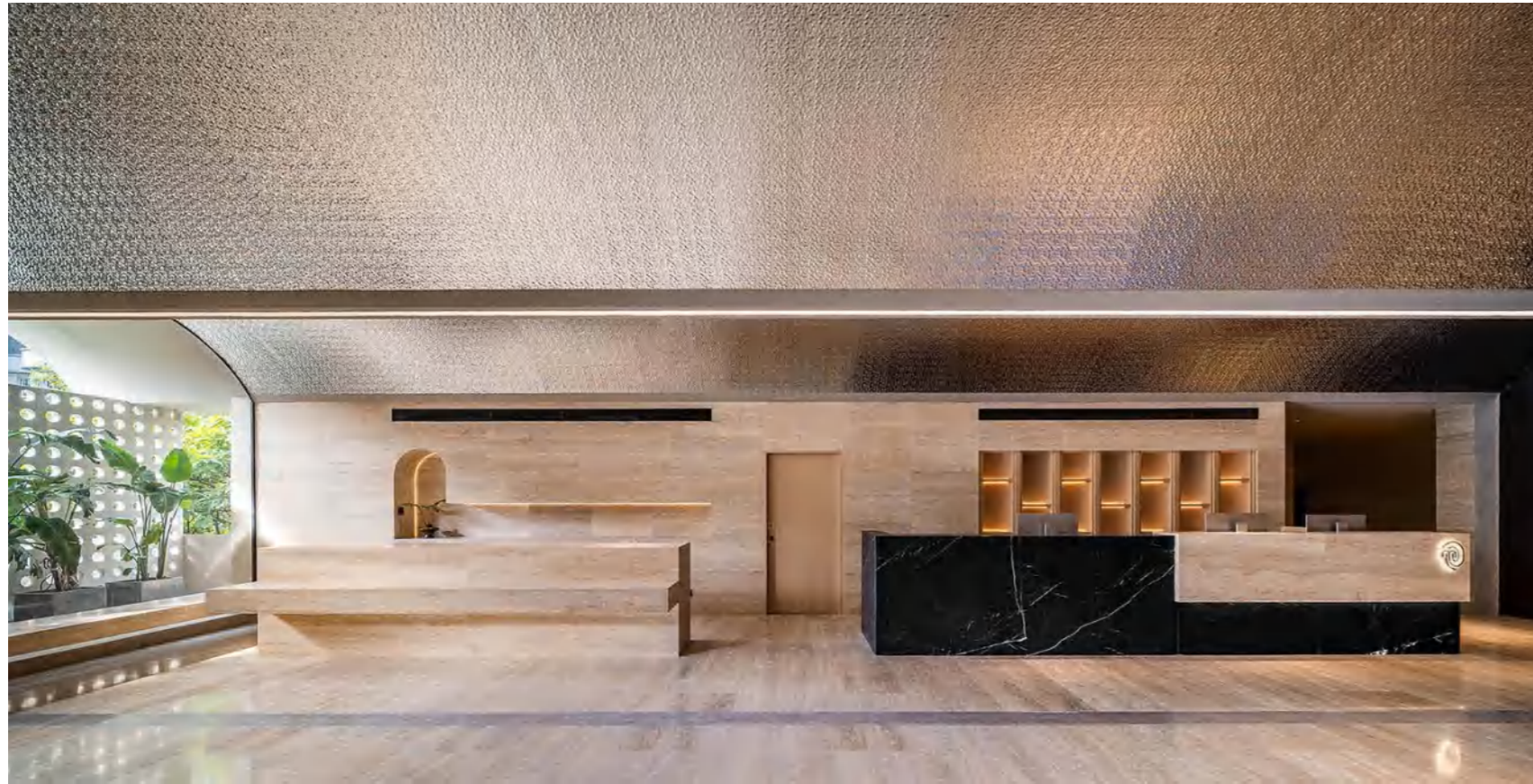
HN-SW-9226

Application

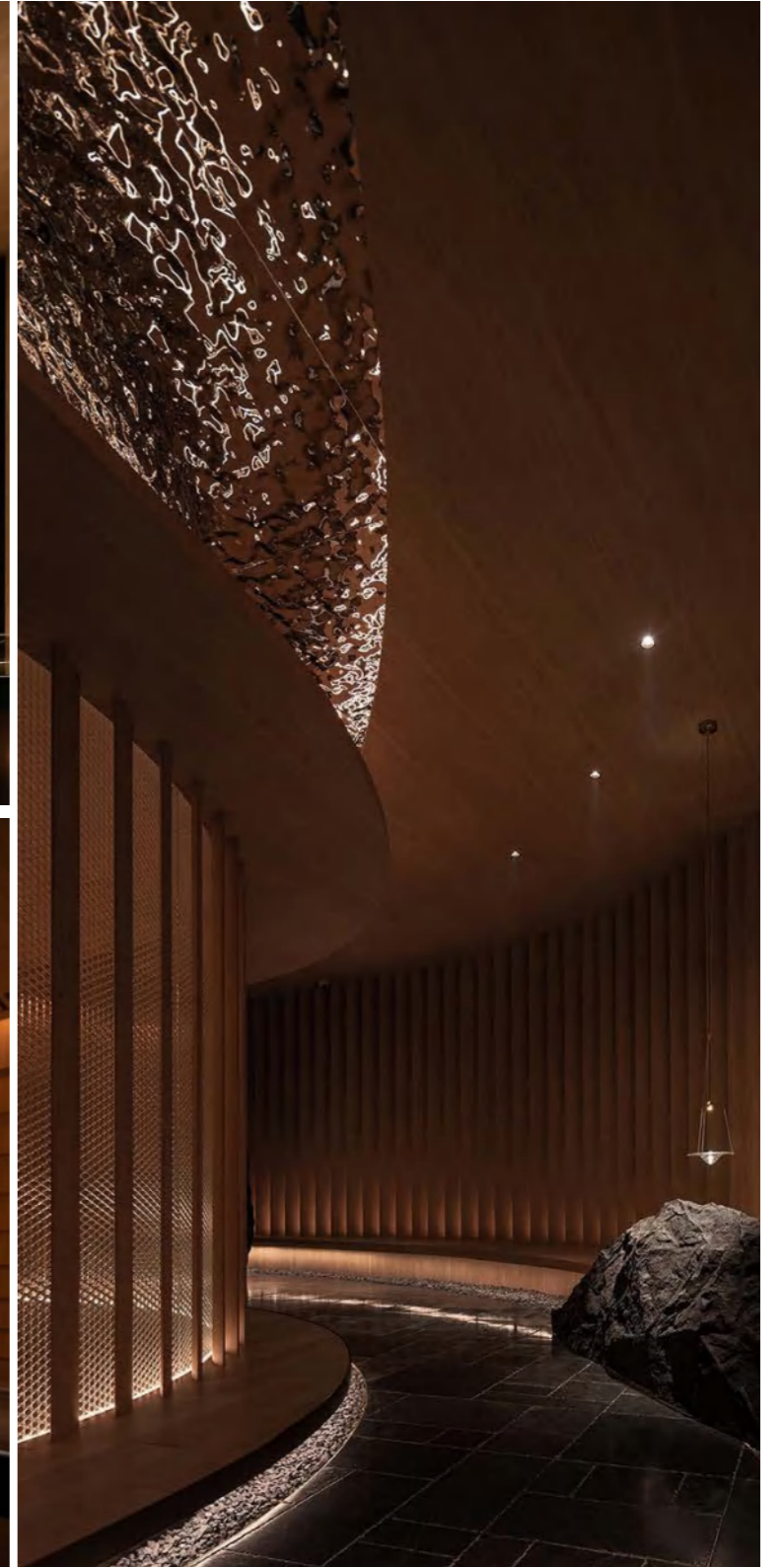
Ceiling | Cladding | Art deco etc.



福州指沐 - 水印 SPA
Foot Spa Chain Stores



HOMURA 焱铸
Homura Restaurant



福州晋安区“太空”石材展厅
Marble Showroom Fuzhou



中豪 五福国际销售中心
Zonhow 5Fook International



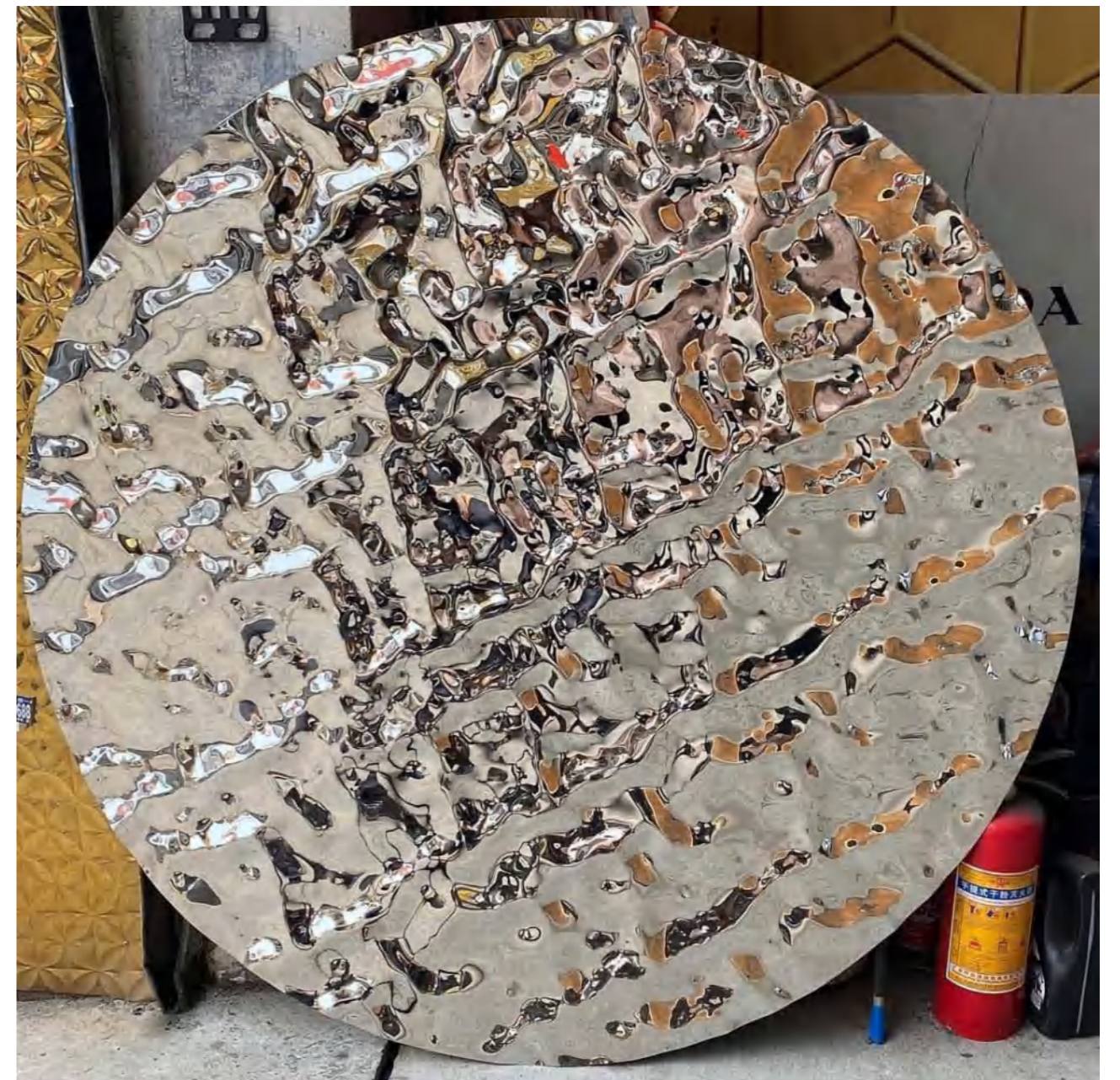
郴州龙憩大酒店
Longqin Hotel Chenzhou



Water ripple panel



Water ripple ceiling



Ordering

The information provided below is your guide for choosing the right H&N DECO METAL Decorative stainless steel product for your project.

APPLICATION

Please determine the environment in which the material will be used:Indoor/Outdoor/By the sea
Please identify the application scenario of the material:uses include wall cladding, room partitions, cloumn, ceiling, cabinet,logo design and more.

MATERIAL TYPE

Finishes and colors
Visit www.hndecometal.com for the latest material information

PRODUCT SIZE, FORM & QUANTITY

Number of coils and/or sheets including cut-to-size pieces and stub preferences.

PROCESSING

Please determine if further processing is required

PROVIDE DESIGN DRAWINGS

We can deepen the design according to your drawings

ACCESSORIES

Determine if Wire Mesh Accessories such as Angle, Flat Bar or U-Edging framing solutions are required for your application.

Package&Delivery

Package details:

- 1) First layer by lasering PVC, second layer as China local black&white PVC.
- 2) Waterproof paper covered;
- 3) Thick wooden plates to cover;
- 4) Metal pallet for LCL to avoid damage, and full wooden pallets with covers for FCL

Marking and Loading:

PVC marking with goods details onto every sheet, marked by stickers for every single pallet, loaded as 20" container, FCL and LCL provided

Port:Foshan port

product	standard product	customized product
Lead time(days)	3-5 days	To be negotiated





Sample room



Custom-made Service

Metalwork fabrication process:
Laser cutting /Welding / PVDcoating/Fabrication / Assembling Stations

We have the capabilities to bring your creative vision to life. Quality materials and products that are more unique in design, craft, and execution than any other metals on the market.



Material Custom-made Service

Already have a pattern in mind? Don't worry. We can customize according to your sample. We have rich experience in customizing materials with more than 90% similarity





