

#7

LASER CUT

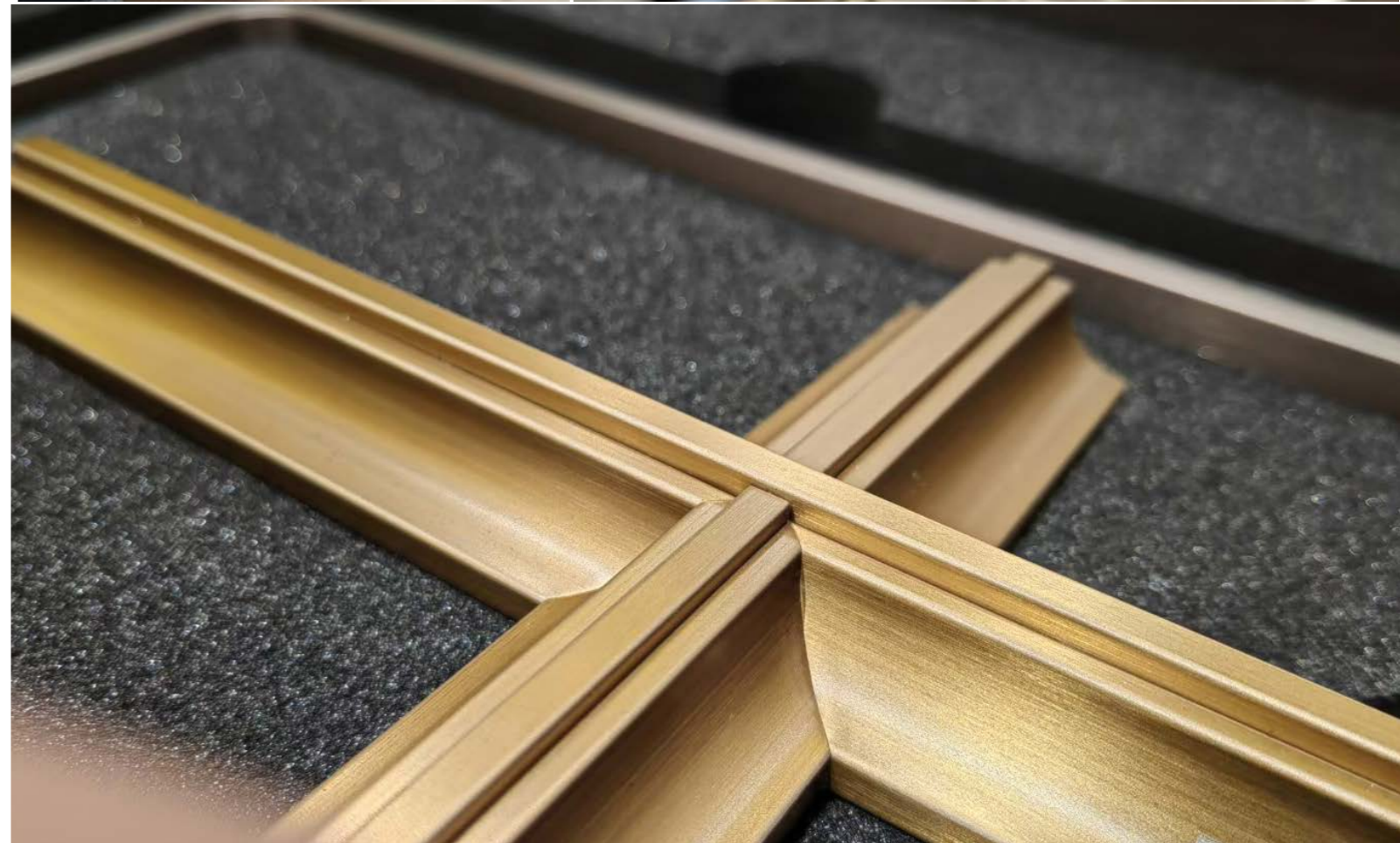
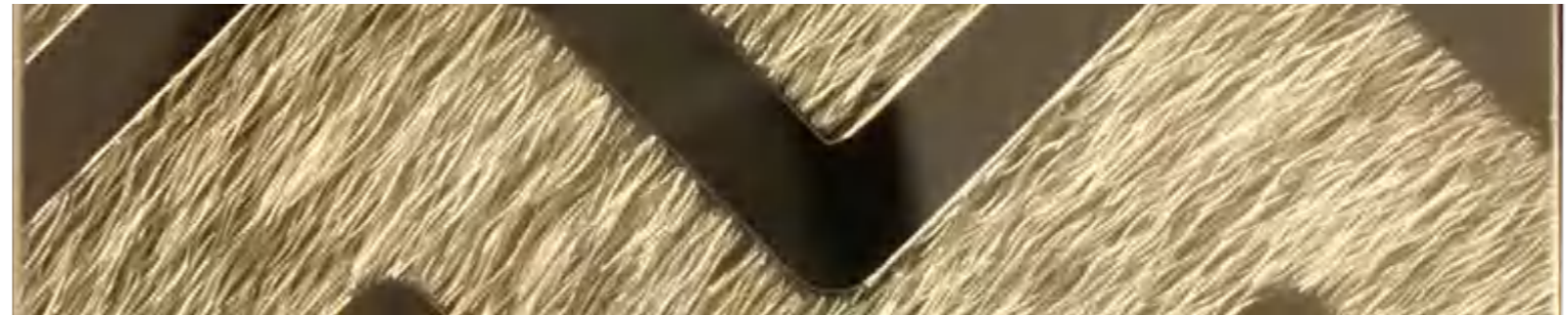
Decorative stainless steel sheet

H&N DECO METAL

2023-03-25

About us

Established in 2011, Foshan H&N Decoration metal Material Engineering Co., Ltd. is a specialized enterprise that provides decorative stainless steel sheets, sheet metal processing, metal structure fabrication, and metal decoration engineering. We create architectural metal products for illuminating industry, hospitality, commercial, workplace, transportation, entertainment, and retail markets, for twelve years, we have successfully helped architects, designers, contractors and homeowners to provide stainless steel materials and total solutions that meet project requirements and budgets.



STARTED BUSINESS

Mr.Peng Shihong and
Ms.Wang Baowei founded the
LaoPeng Metal Material Shop
in Zhongshan city

2011

OPEN MIRROR POLISH FACTORY

We have 6 flat plate
production lines and 8 coil
strip production lines. We
are able to provide our
customers with plates/coils
with different surface
effects such as 8K, fine
grinding and super fine
grinding.

2014

OPEN LASER CUTTING FACTORY

Start metal work
processing such as laser
cutting 、Welding 、
PVDcoating 、Fabrication 、
Assembling Stations

2019

OPEN H&N DECO METAL

Provide one stop
solution metal work for
customers around the
world

2022



Qualifications and Experience

- Third Grade National Architecture Decoration Enterprise and authorized by ISO 9001/2000.
- One of the earliest and the largest manufacturers in China offering all the specialized and standard surface finishing processing.
- Twelve years' specialized production experience, with the ability to control the whole processes, to guarantee the quality and cost, as well as quick delivery.



**Mirror polishing
Factory(Foshan)**
Address : No.72 (F5),
North District, Foshan
Electronic and Electrical
Industry Base, Baini Town,
Sanshui District, Foshan
City, Guangdong Province,
China



**Laser cutting
Factory(Zhongshan)**
Address : Gusan
Venture Park, Northeast
4th Road, Industrial
Avenue, Zhongshan City,
Guangdong Province,
China



**Decometal material
shop(Zhongshan)**
Address : F1, Zhenglian
Shopping Plaza, No.138
Zhongxing Avenue North,
Guzhen, Zhongshan City,
Guangdong Province,
China

WHY CHOICE US:

- 1.Factory Direct: We have two metal products processing plants and one offline metal sales center in China with a total area of 8,000m²,Factory direct sales make the price and quality more advantageous
- 2.Quality Control: We build a powerful supply chain,We have a material inspection team to make sure what we receive the material with every decent quality
- 3.Material Diversity: We are one of the largest suppliers of metal materials patterns in the Chinese market.Variety of materials for your design options
- 4.Custom-made Service: We have a professional design team with an average of more than 4 years of design experience.In addition to our standard metal sheet products, we also provide our customers with professional customization services

METAL DECORATION ENGINEERING

Commercial | Hotel | Office | Show room | Villa | Casino | Integrated Resorts | Food & Beverage

PRODUCT

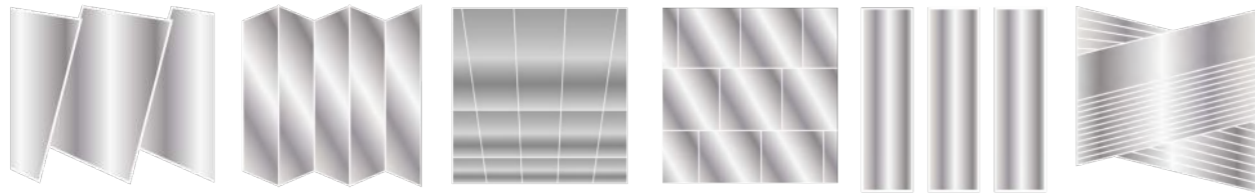
Stainless steel decorative sheet(coil) | Room divider | Metal ceiling | Wall cladding | Column cladding | Wall cabinet | Commercial entrance door | Metal logo etc.

SURFACE PROCESS

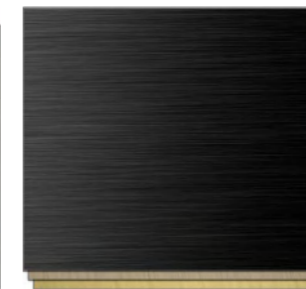
Mirror polish | Brush | Sandblasted | Etching | Perforated | Brass | Antique | Anti finger print(AFP)

METAL WORK FABRICATION PROCESS

:Laser cutting | Welding | PVDcoating | Fabrication | Assembling Stations



Mirror sheet



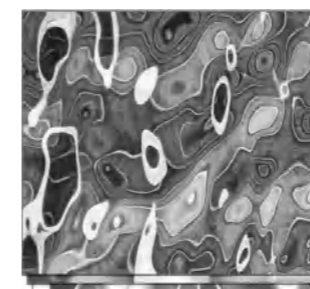
Hairline sheet



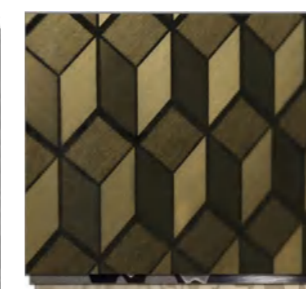
Vibration sheet



Sandblasted sheet



Stamped sheet



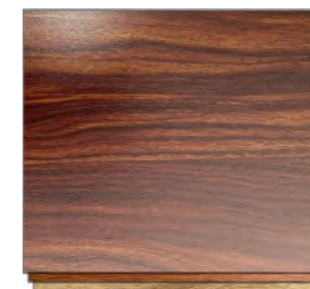
Etching sheet



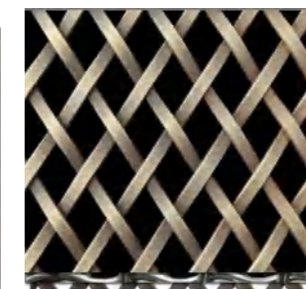
Antique sheet



Patina sheet



Lamination sheet



Wire mesh



Perforated sheet



Laser cut sheet

With over two thousand colors and textures to choose from, we can support any design you want.
Dive deeper: please [H&N MATERIAL CATALOGUE](#)

Laser cut

Laser cutting stainless steel technology is the use of laser beam shines on the surface of the steel plate, the laser beam energy is highly concentrated, the local rapid heating of stainless steel, stainless steel evaporation, so as to achieve the cutting of stainless steel. The laser cutting process has narrow kerf, high precision, and the workpiece is basically not deformed.

Application:divider | cladding | ceiling |column etc



Laser cut ceiling

The corridor of the main entrance cleverly use aluminum laser cut panels takes the natural form of the bamboo clusters to create a level of spatial "perspective". When the sun shines, a scene of walking in a bamboo forest was created, developing a connection between people, space and nature.

Project: Bamboo Garden

Site: Zhen Zhou

Design: S.P.I Landscape Design Co.,ltd.

product: Ceiling

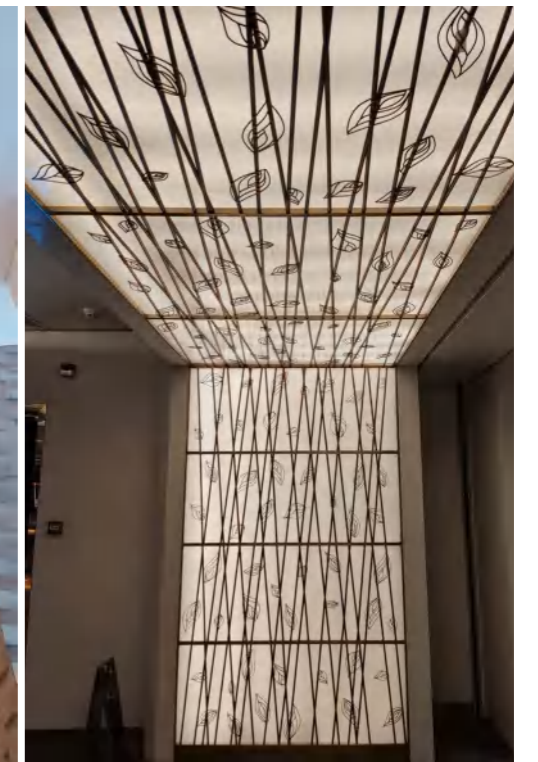
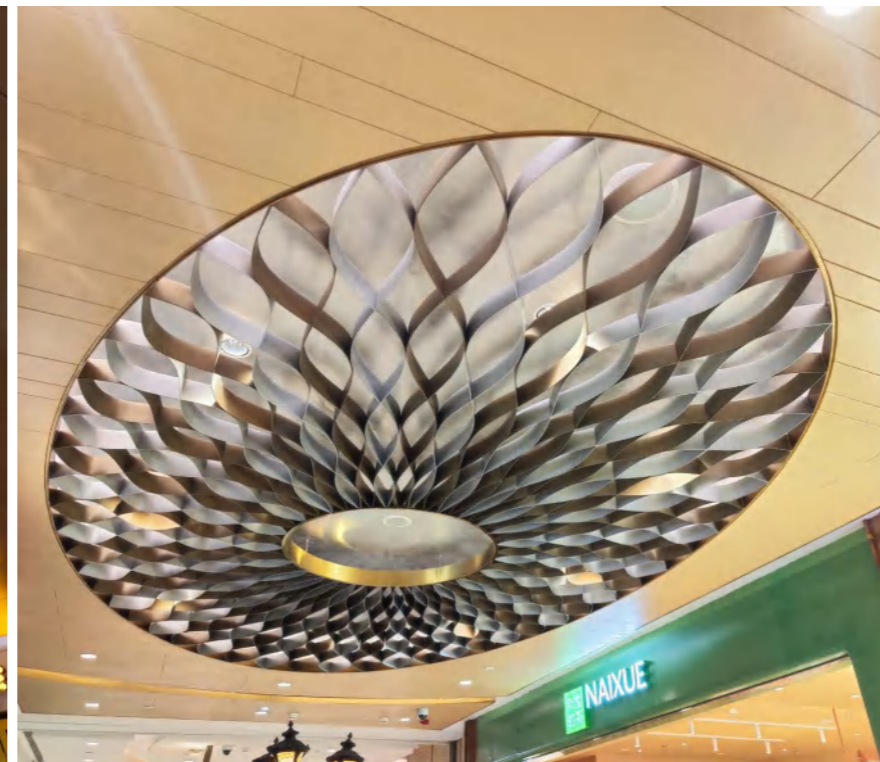
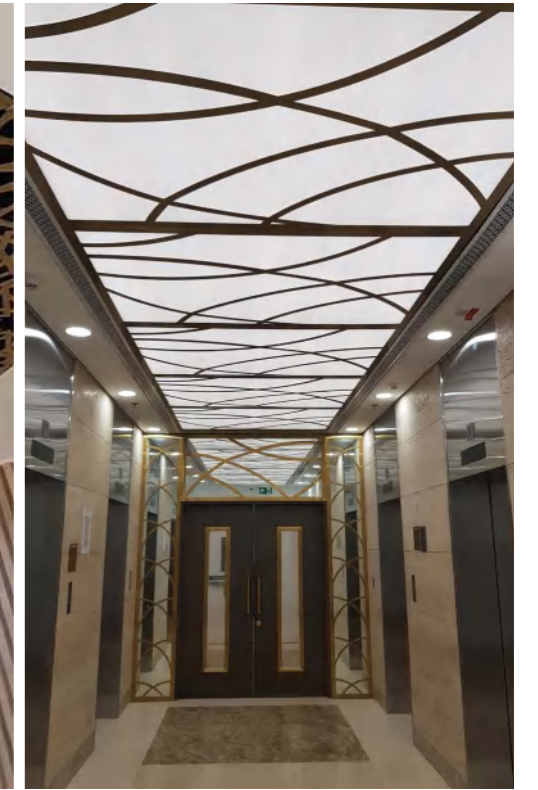
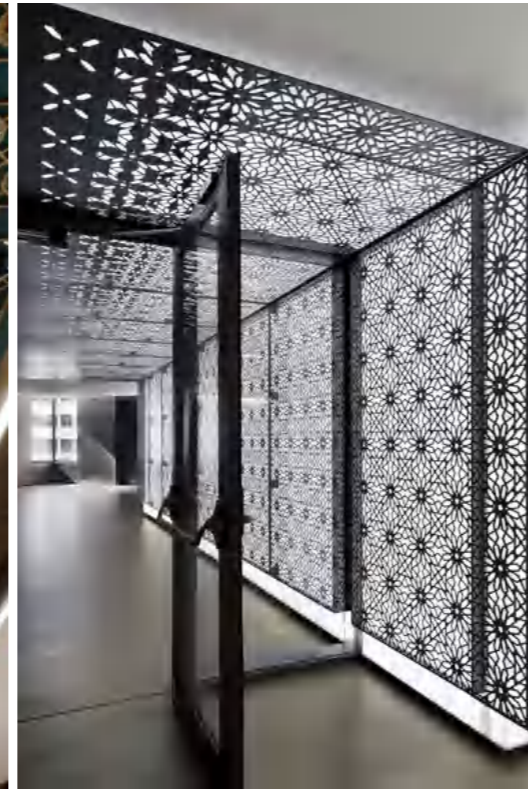
Material: Aluminum laser cut sheet



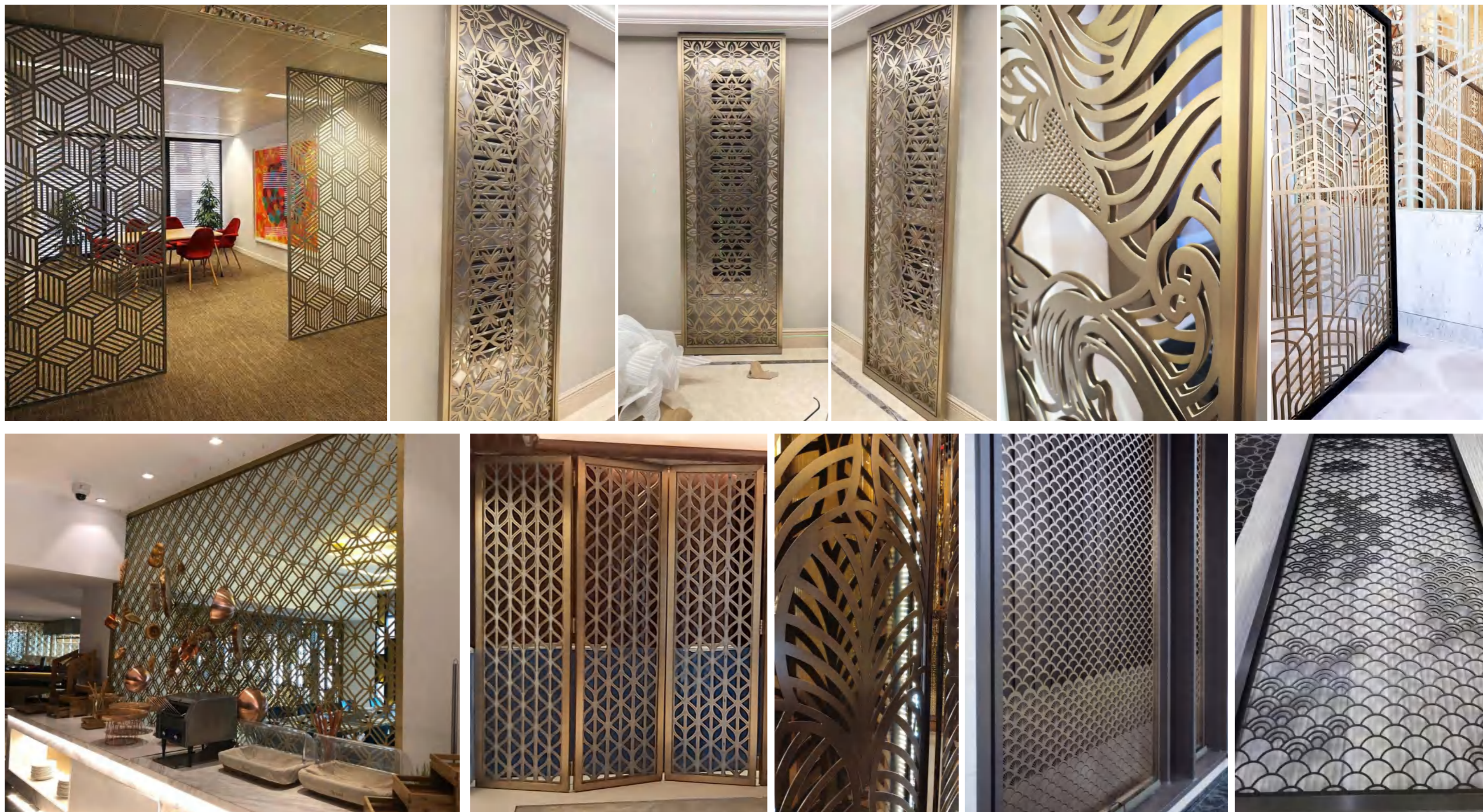
Laser cut ceiling



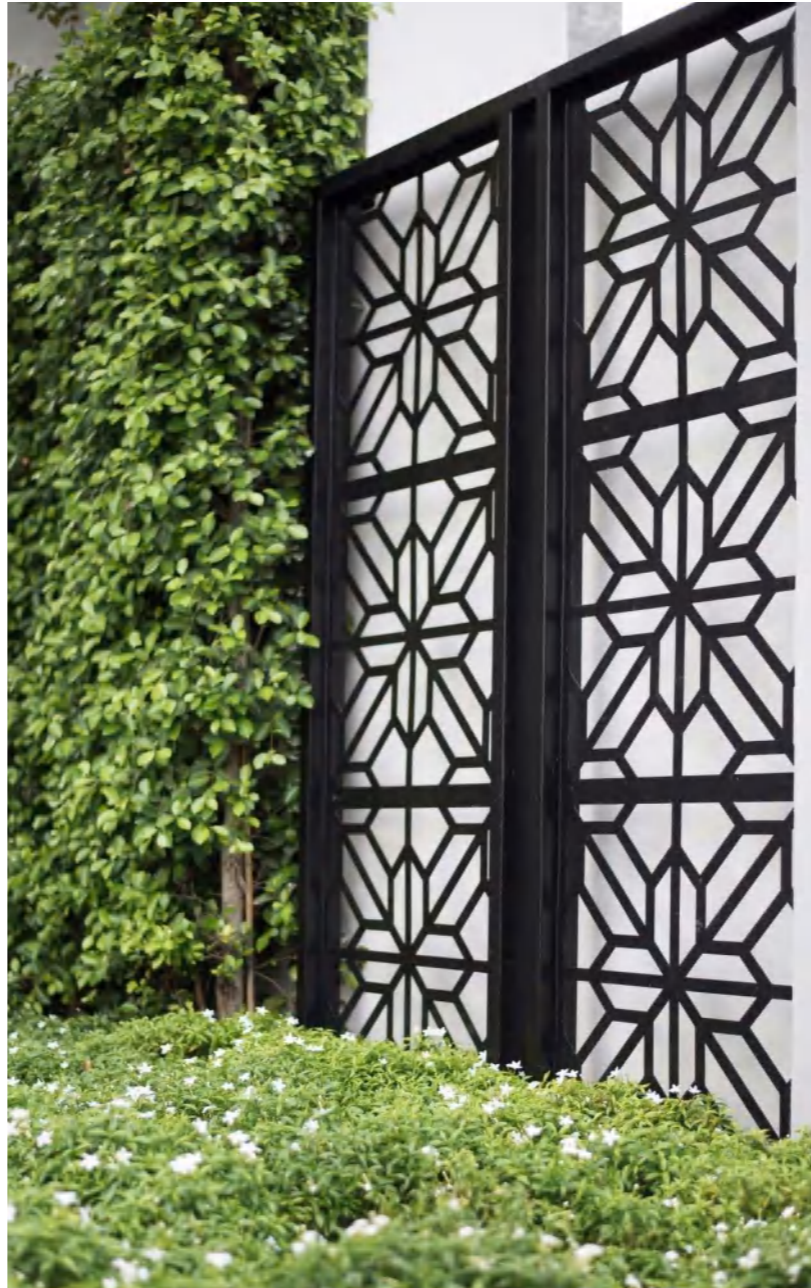
Laser cut ceiling



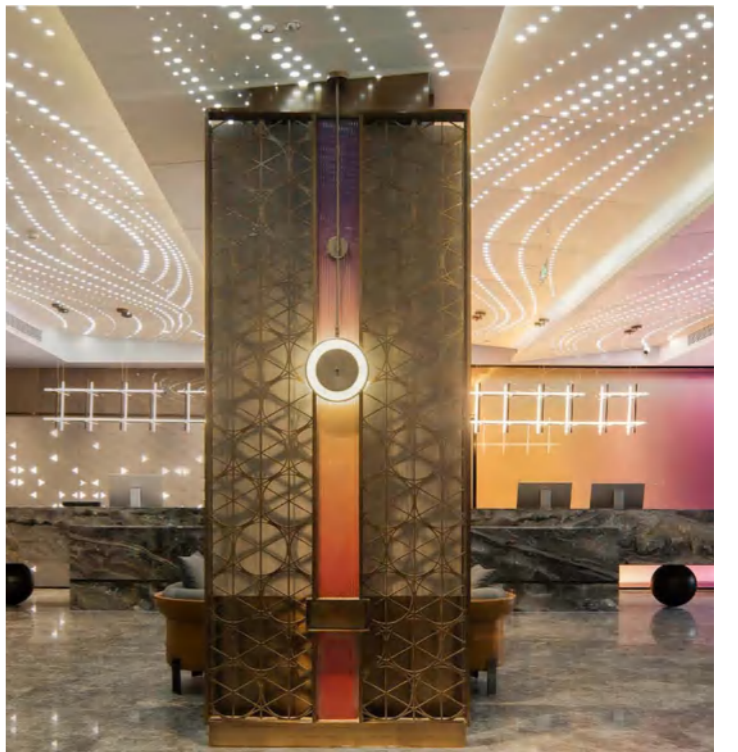
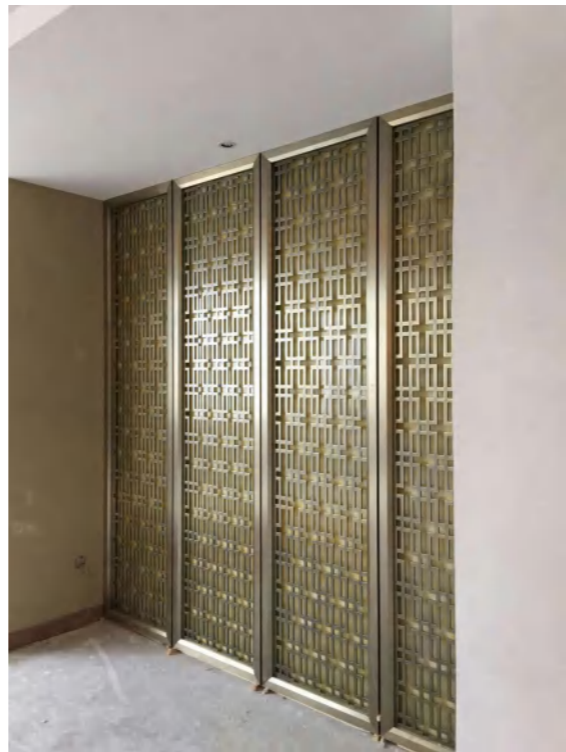
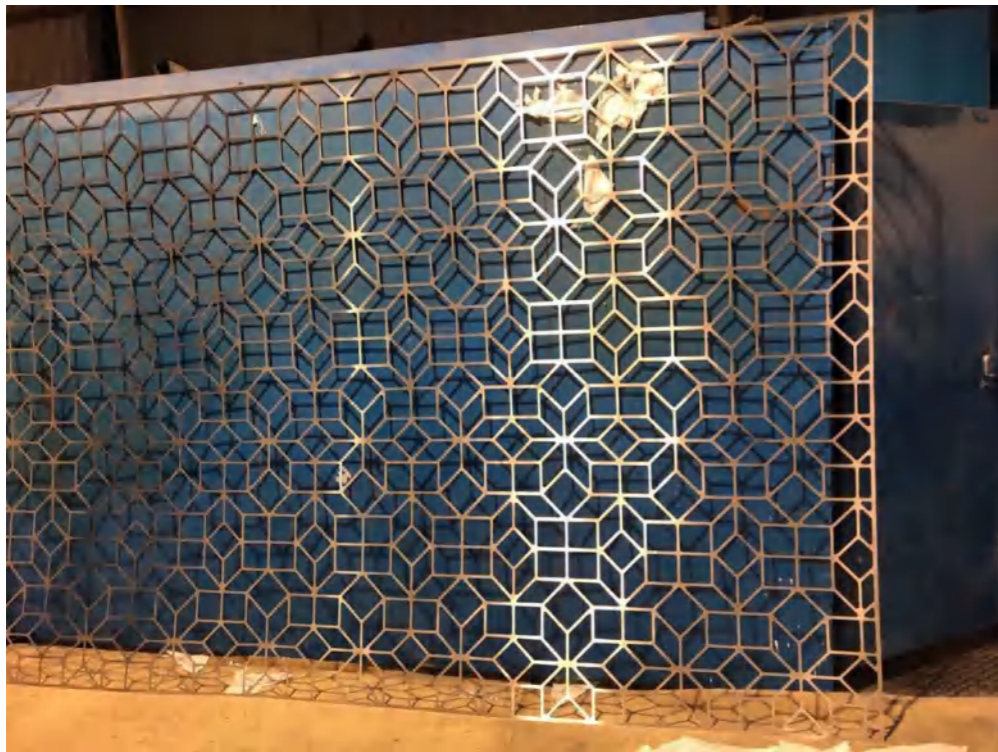
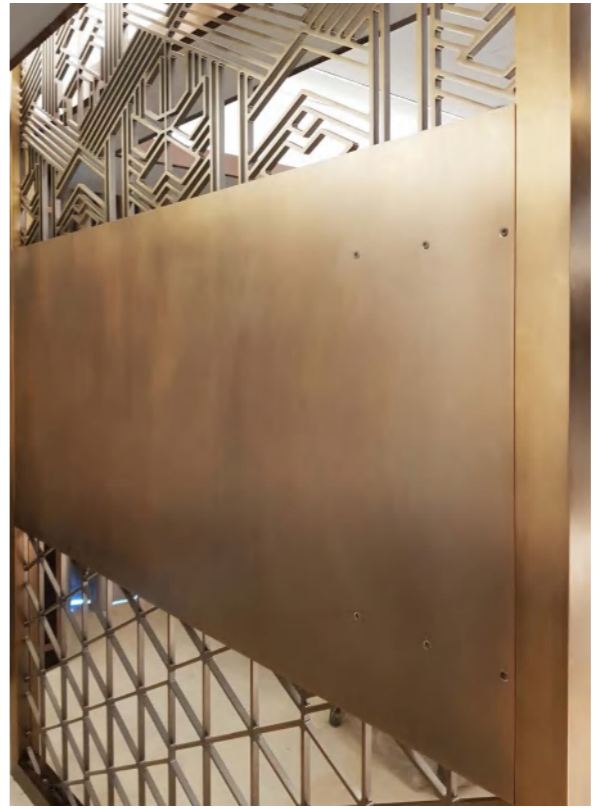
Laser cut divider



Laser cut divider



Laser cut cladding



Laser cut cladding



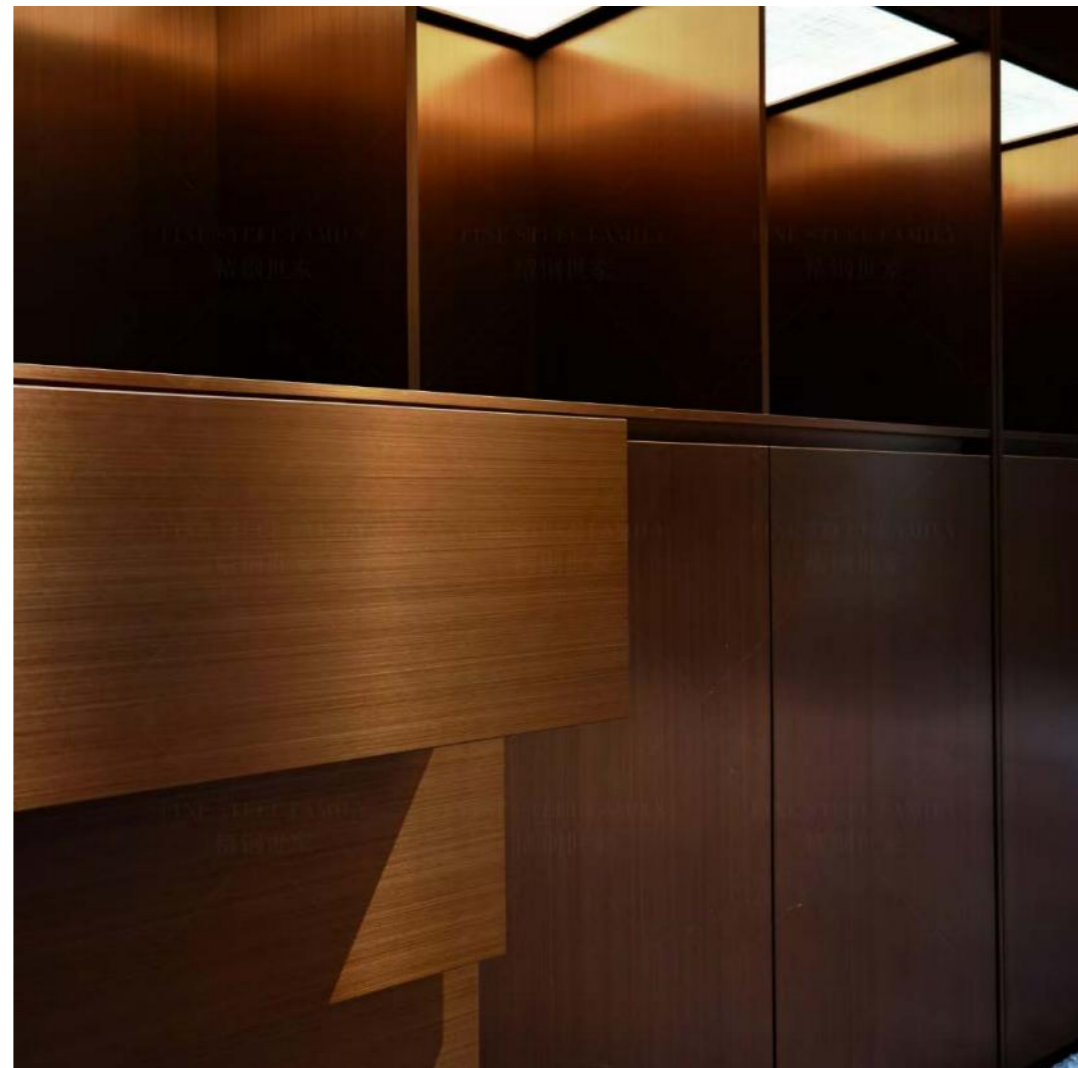
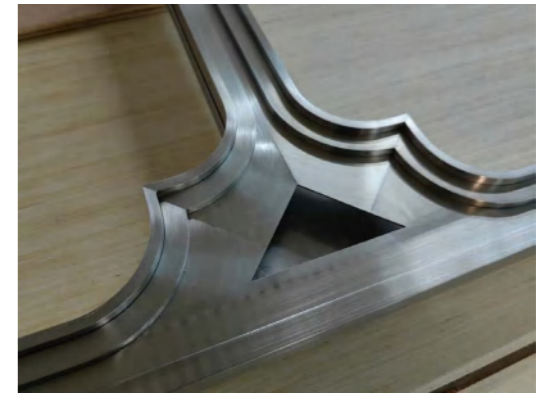
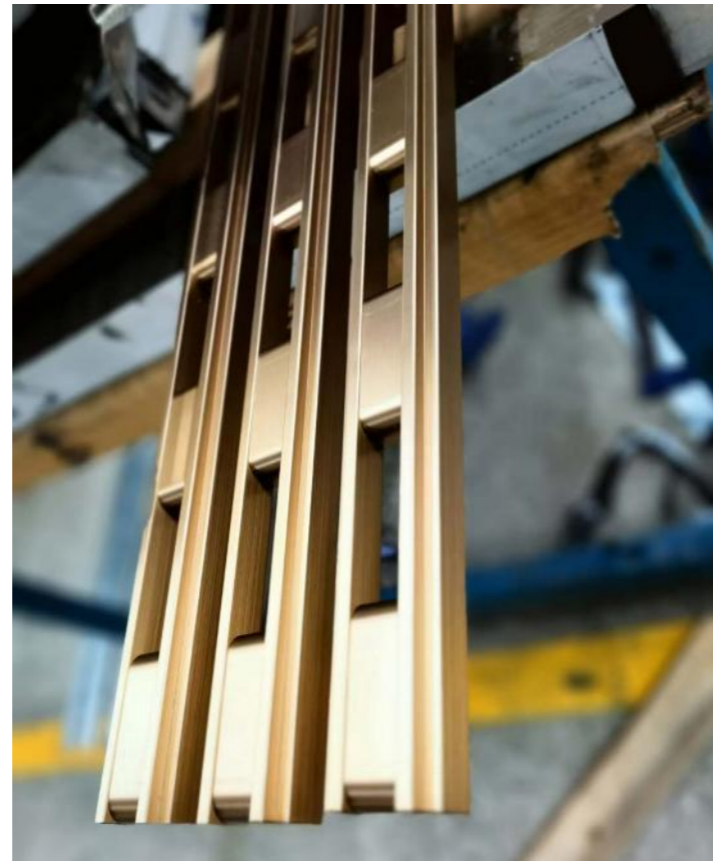
Customized

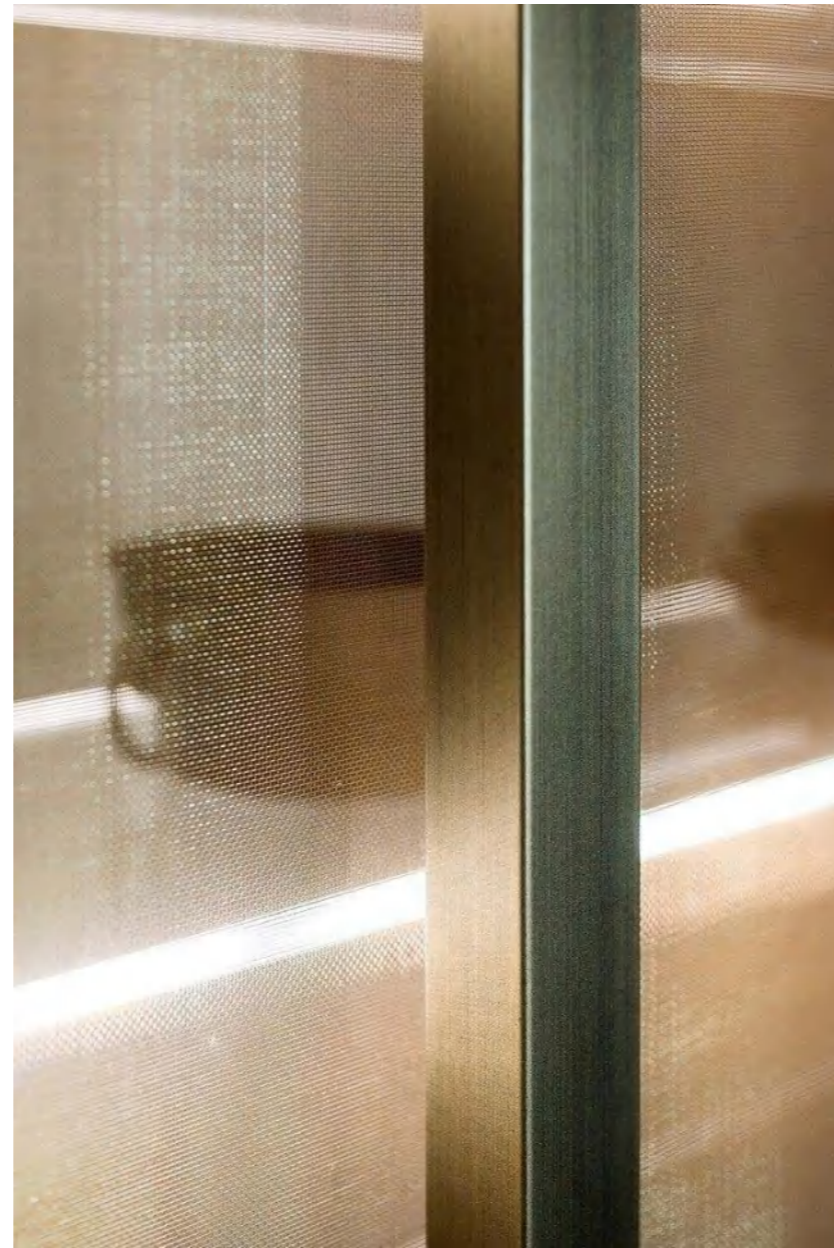
Metalwork fabrication process:
Laser cutting / Welding / PVDcoating/Fabrication / Assembling Stations

We have the capabilities to bring your creative vision to life. Quality materials and products that are more unique in design, craft, and execution than any other metals on the market.



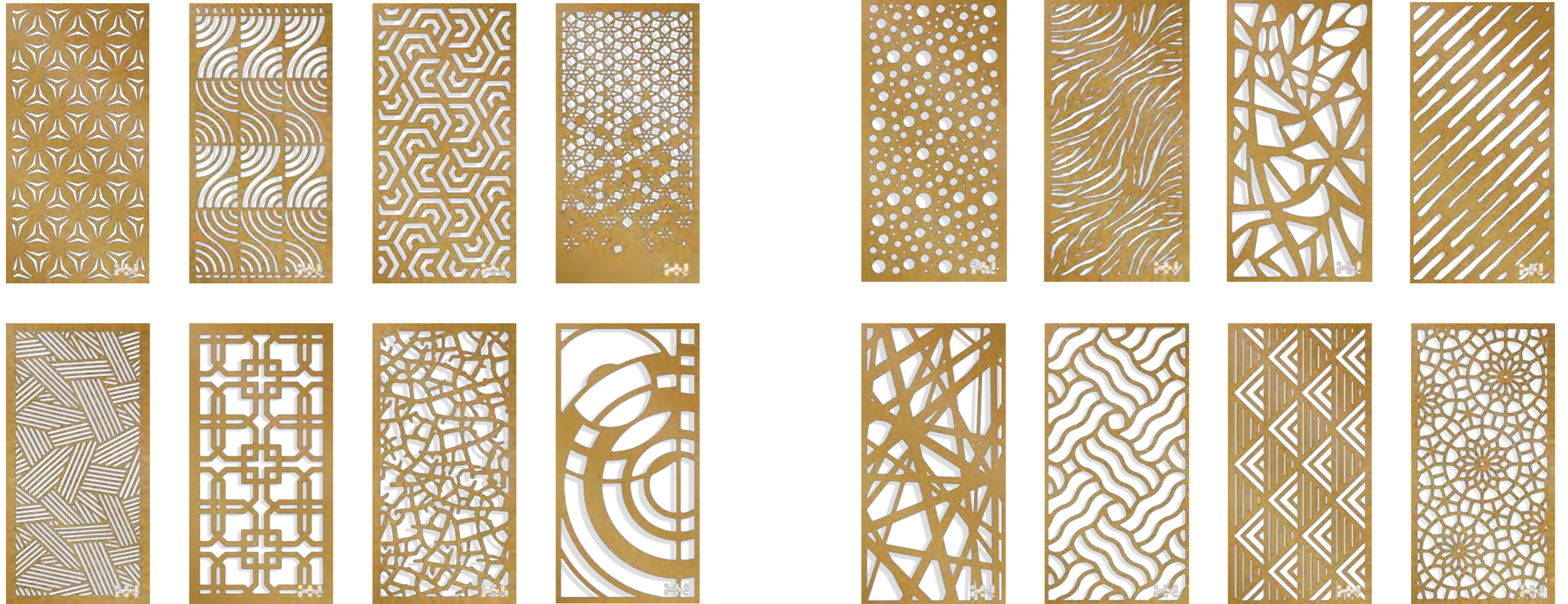


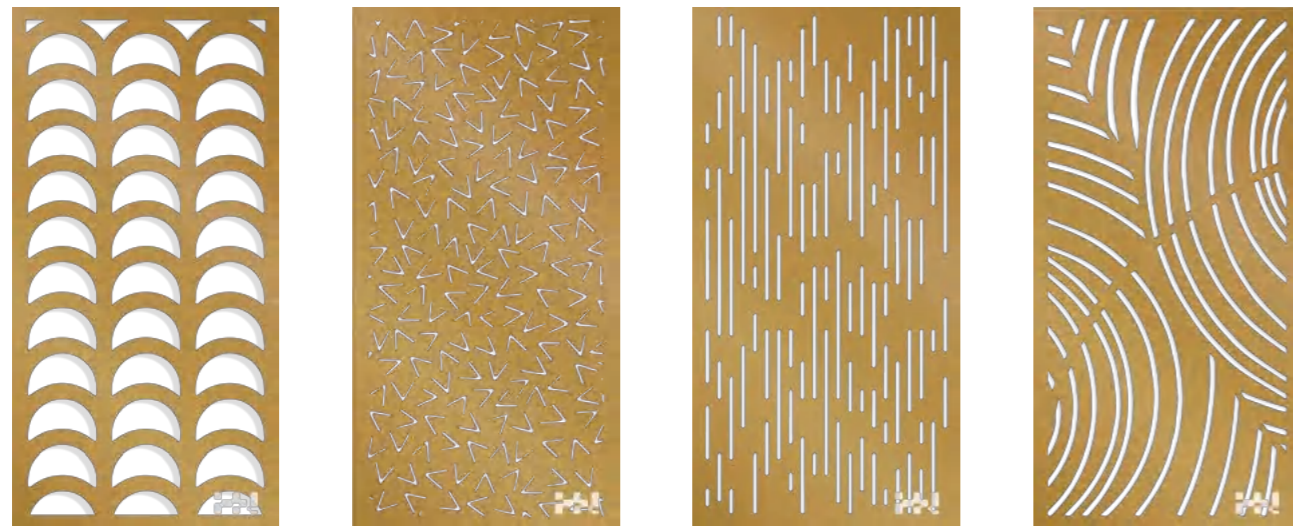




Standard patterns

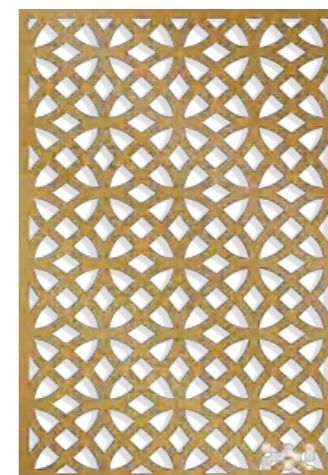
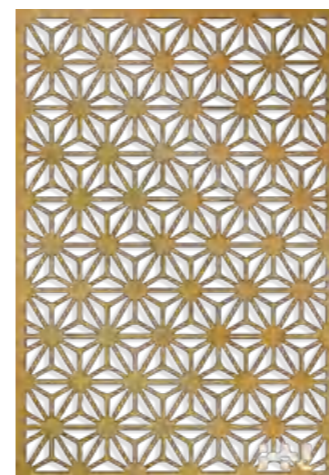
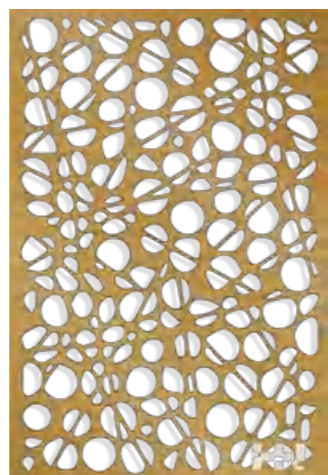
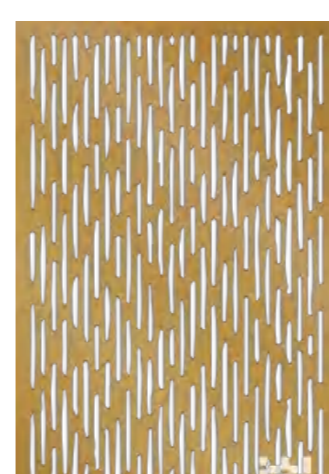
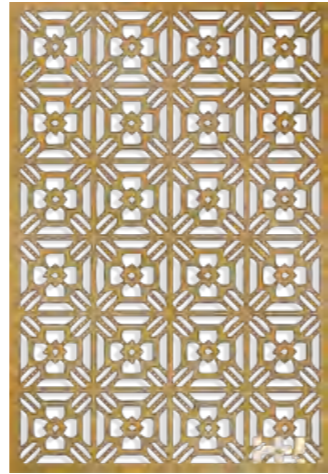
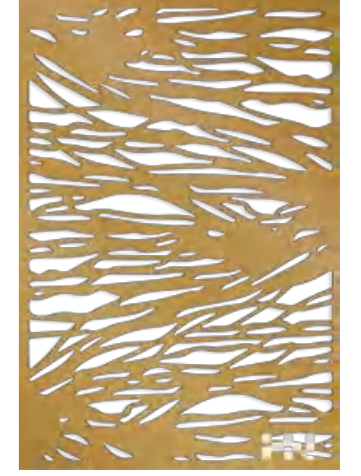
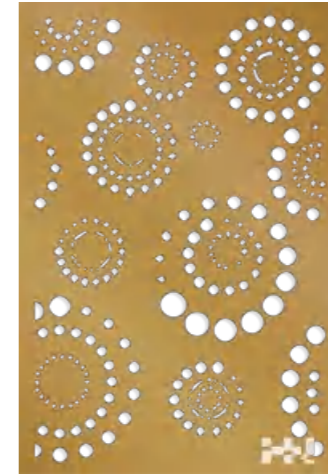
Available in over 80 standard 4'x 8' size patterns with the ability to customize the size and shape of the metal cuts to control the amount of light flow throughout the environment.











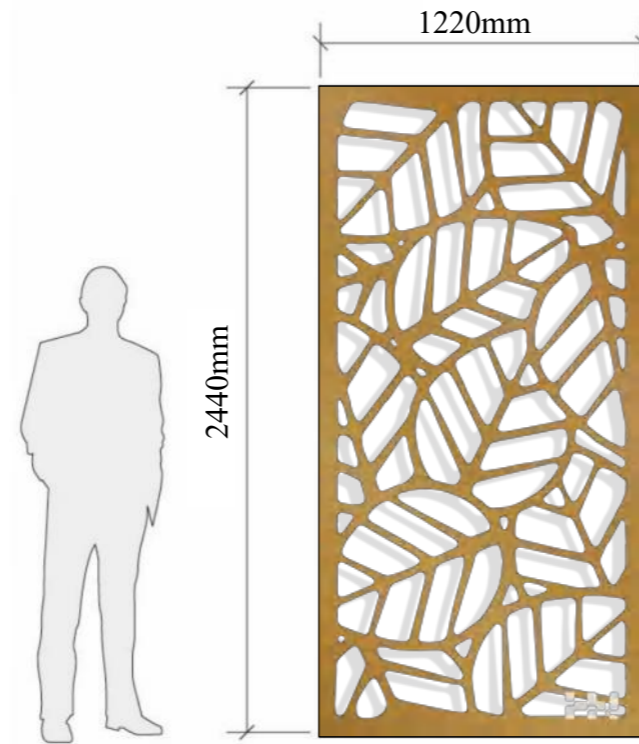
Pattren-01

MATERIAL:
Stainless steel sheet | Aluminum | Corten steel

BORDER THICKNESS:
1.5-3.0mm

SIZE CHOICE:
2440mmX1220mm
3050mmX1220mm
2000mmX1000mm
3000mmX1500mm
Customized

APPLICATION:
Divider | Cladding |Ceiling |Column etc



3-PANEL REPEAT



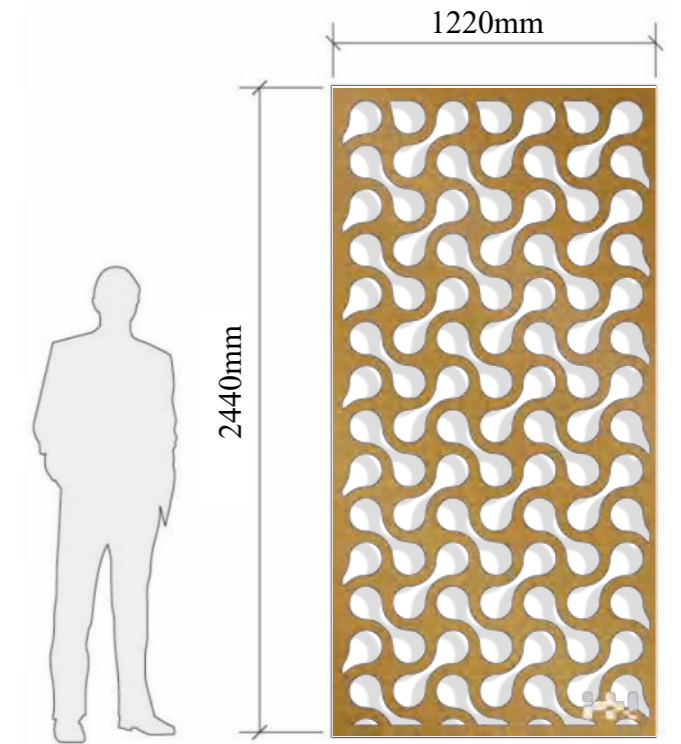
Pattren-02

MATERIAL:
Stainless steel sheet | Aluminum | Corten steel

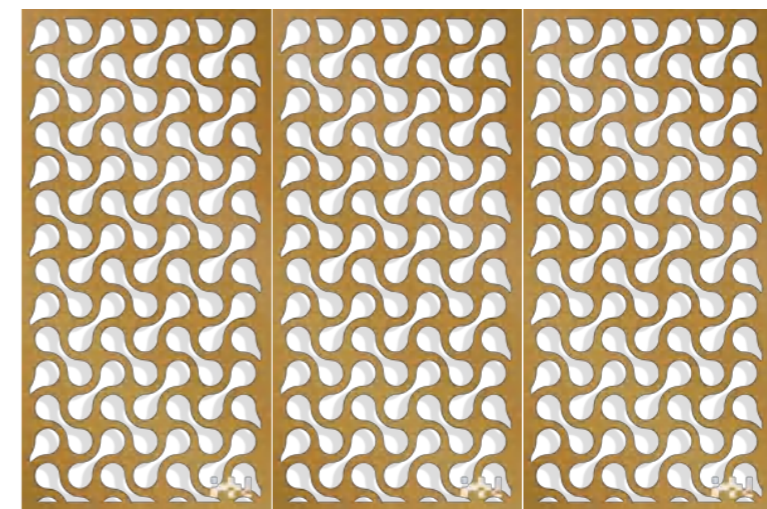
BORDER THICKNESS:
1.5-3.0mm

SIZE CHOICE:
2440mmX1220mm
3050mmX1220mm
2000mmX1000mm
3000mmX1500mm
Customized

APPLICATION:
Divider | Cladding |Ceiling |Column etc



3-PANEL REPEAT



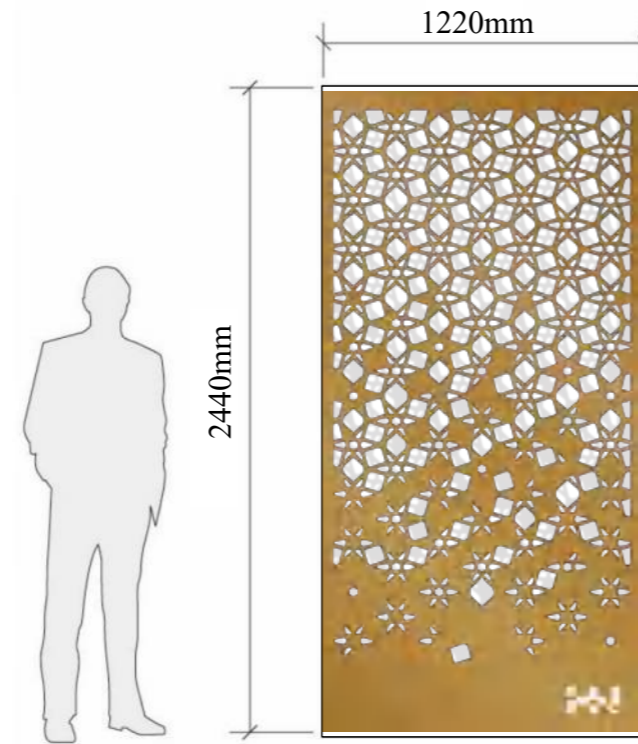
Pattren-03

MATERIAL:
Stainless steel sheet | Aluminum | Corten steel

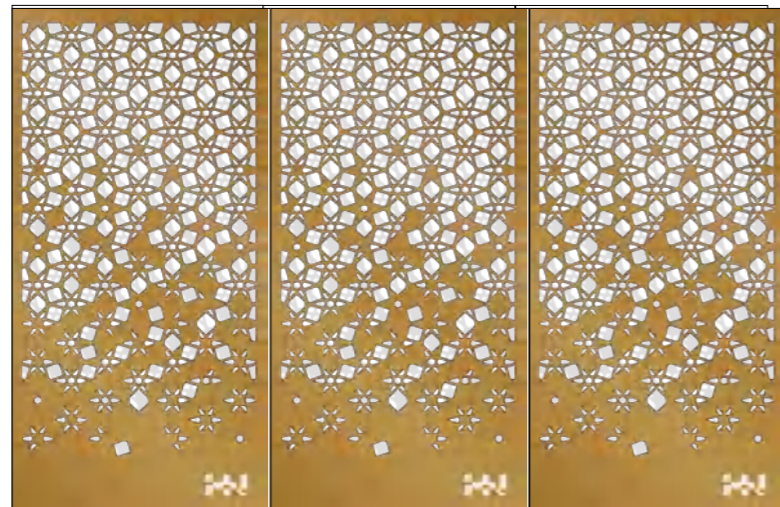
BORDER THICKNESS:
1.5-3.0mm

SIZE CHOICE:
2440mmX1220mm
3050mmX1220mm
2000mmX1000mm
3000mmX1500mm
Customized

APPLICATION:
Divider | Cladding | Ceiling | Column etc



3-PANEL REPEAT



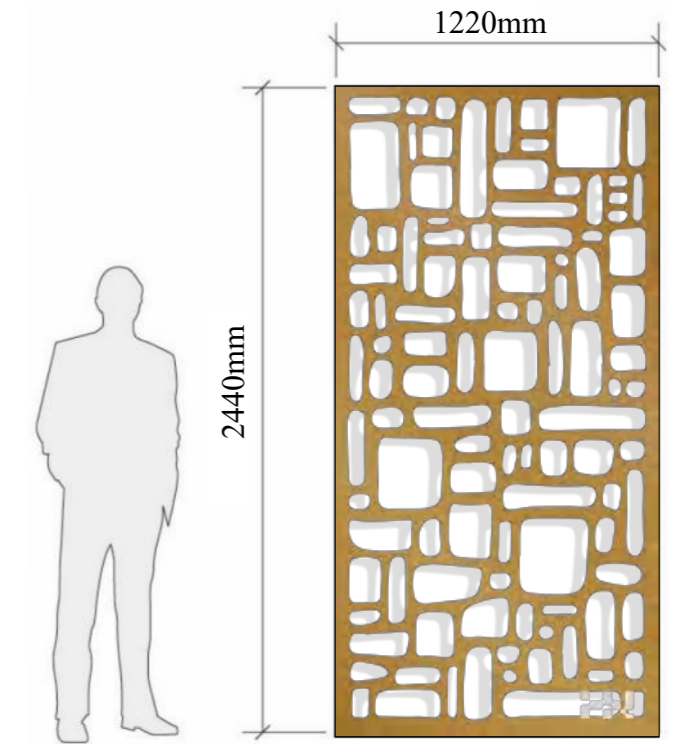
Pattren-04

MATERIAL:
Stainless steel sheet | Aluminum | Corten steel

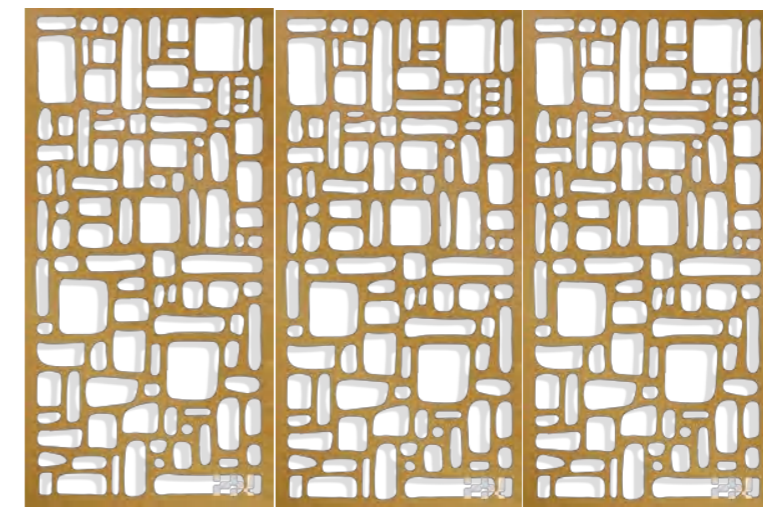
BORDER THICKNESS:
1.5-3.0mm

SIZE CHOICE:
2440mmX1220mm
3050mmX1220mm
2000mmX1000mm
3000mmX1500mm
Customized

APPLICATION:
Divider | Cladding | Ceiling | Column etc



3-PANEL REPEAT



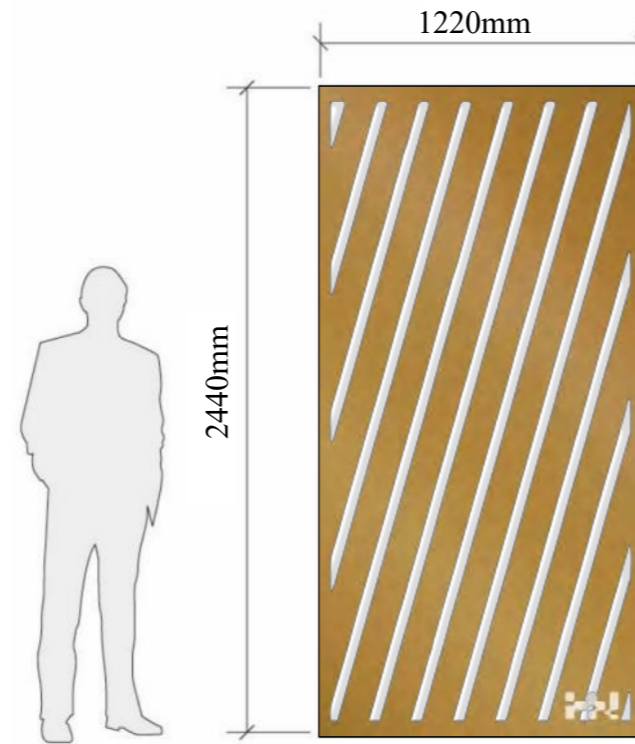
Pattren-05

MATERIAL:
Stainless steel sheet | Aluminum | Corten steel

BORDER THICKNESS:
1.5-3.0mm

SIZE CHOICE:
2440mmX1220mm
3050mmX1220mm
2000mmX1000mm
3000mmX1500mm
Customized

APPLICATION:
Divider | Cladding | Ceiling | Column etc



3-PANEL REPEAT



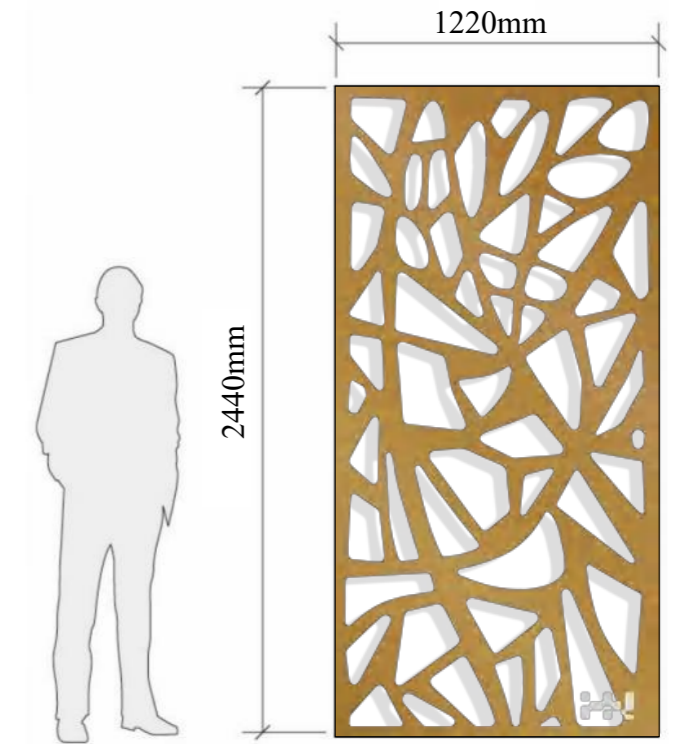
Pattren-06

MATERIAL:
Stainless steel sheet | Aluminum | Corten steel

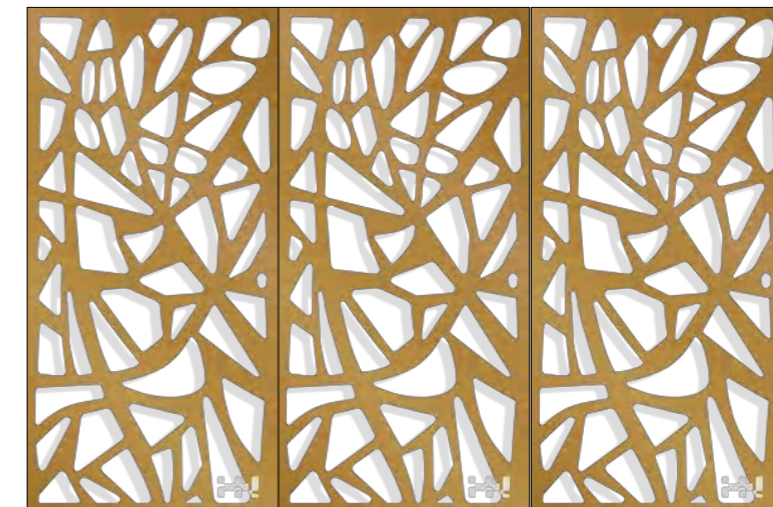
BORDER THICKNESS:
1.5-3.0mm

SIZE CHOICE:
2440mmX1220mm
3050mmX1220mm
2000mmX1000mm
3000mmX1500mm
Customized

APPLICATION:
Divider | Cladding | Ceiling | Column etc



3-PANEL REPEAT



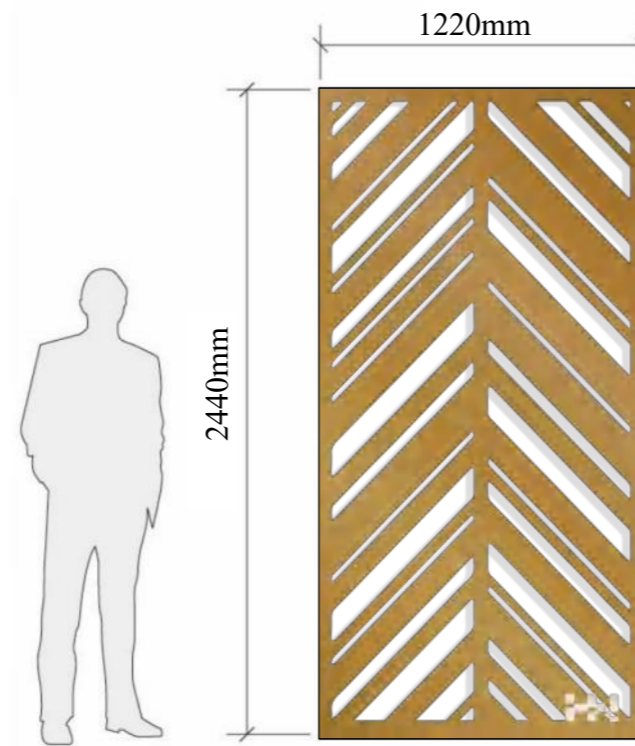
Pattren-07

MATERIAL:
Stainless steel sheet | Aluminum | Corten steel

BORDER THICKNESS:
1.5-3.0mm

SIZE CHOICE:
2440mmX1220mm
3050mmX1220mm
2000mmX1000mm
3000mmX1500mm
Customized

APPLICATION:
Divider | Cladding | Ceiling | Column etc



3-PANEL REPEAT



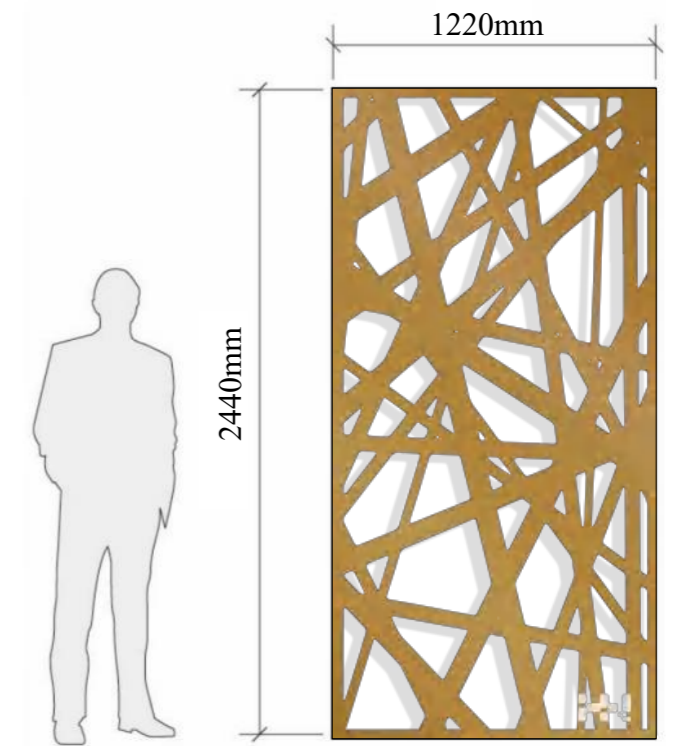
Pattren-08

MATERIAL:
Stainless steel sheet | Aluminum | Corten steel

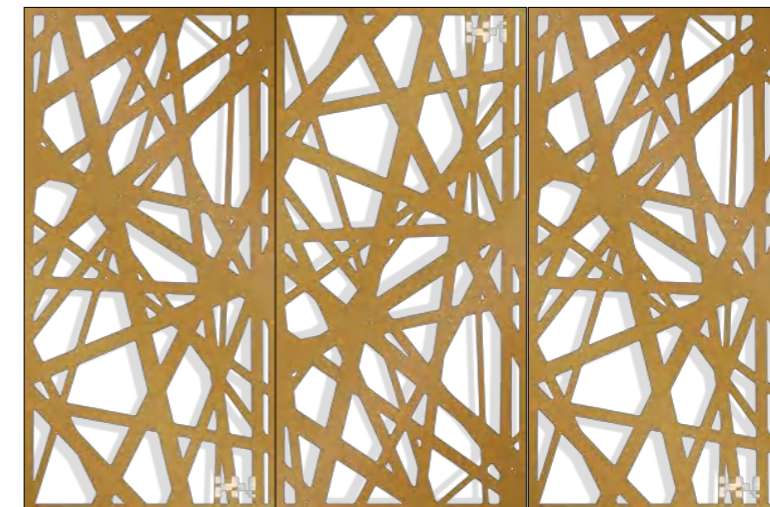
BORDER THICKNESS:
1.5-3.0mm

SIZE CHOICE:
2440mmX1220mm
3050mmX1220mm
2000mmX1000mm
3000mmX1500mm
Customized

APPLICATION:
Divider | Cladding | Ceiling | Column etc



3-PANEL REPEAT



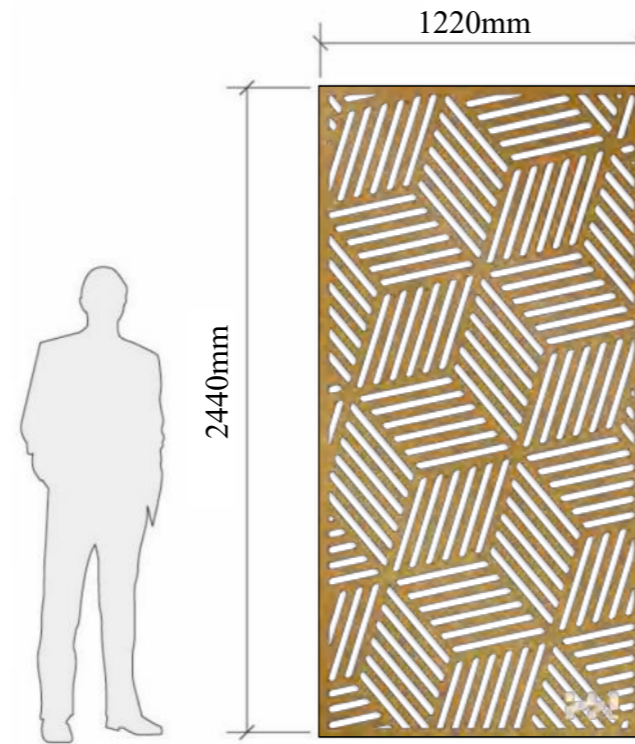
Pattren-09

MATERIAL:
Stainless steel sheet | Aluminum | Corten steel

BORDER THICKNESS:
1.5-3.0mm

SIZE CHOICE:
2440mmX1220mm
3050mmX1220mm
2000mmX1000mm
3000mmX1500mm
Customized

APPLICATION:
Divider | Cladding | Ceiling | Column etc



3-PANEL REPEAT



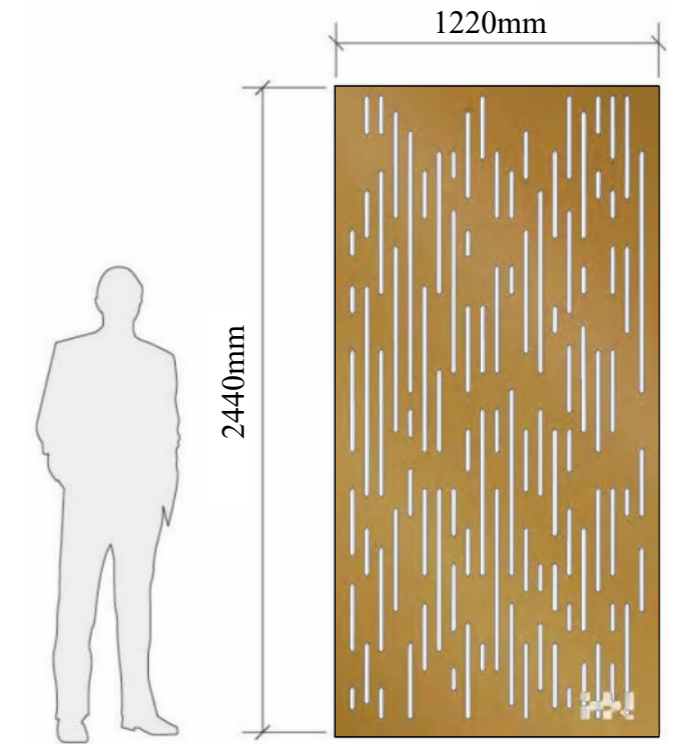
Pattren-10

MATERIAL:
Stainless steel sheet | Aluminum | Corten steel

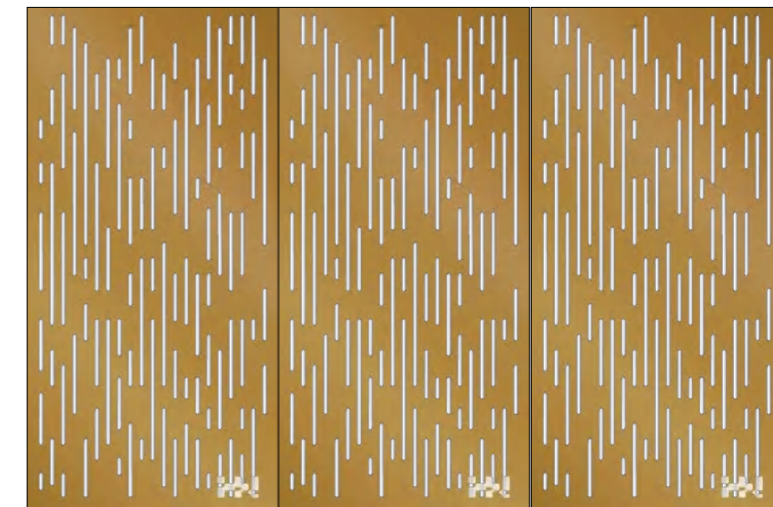
BORDER THICKNESS:
1.5-3.0mm

SIZE CHOICE:
2440mmX1220mm
3050mmX1220mm
2000mmX1000mm
3000mmX1500mm
Customized

APPLICATION:
Divider | Cladding | Ceiling | Column etc



3-PANEL REPEAT



Pattren-11

MATERIAL:

Stainless steel sheet | Aluminum | Corten steel

BORDER THICKNESS:

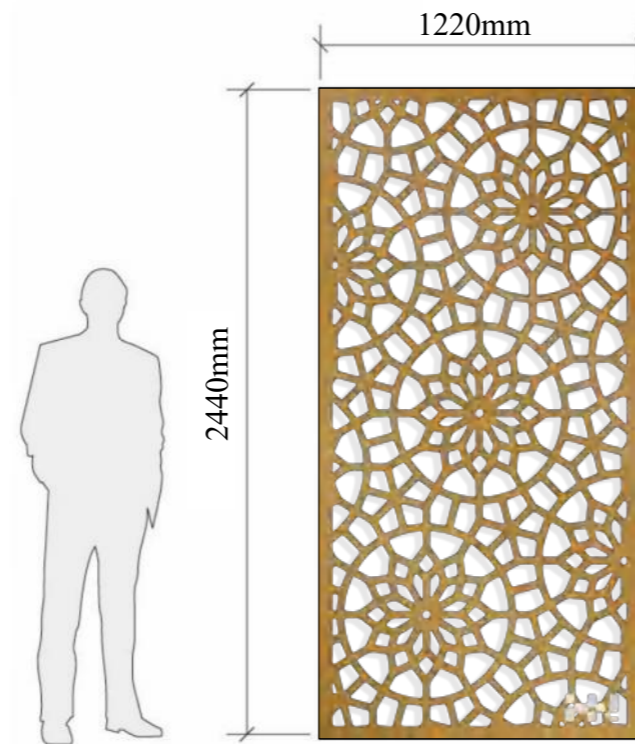
1.5-3.0mm

SIZE CHOICE:

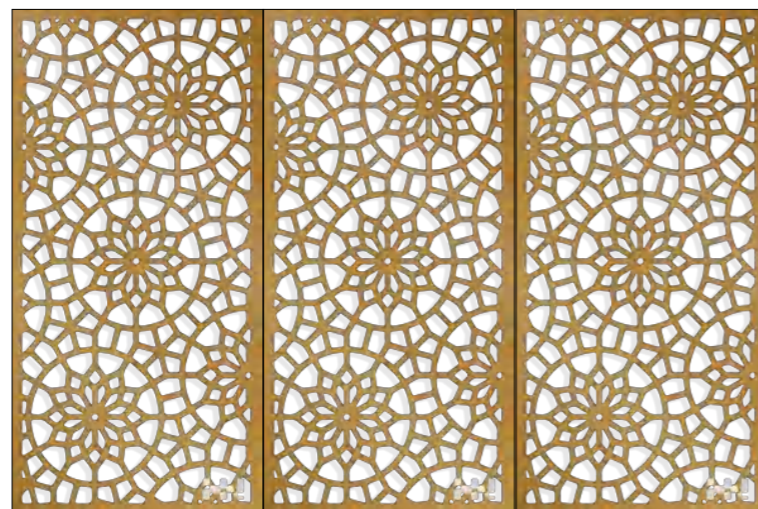
2440mmX1220mm
3050mmX1220mm
2000mmX1000mm
3000mmX1500mm
Customized

APPLICATION:

Divider | Cladding | Ceiling | Column etc



3-PANEL REPEAT



Pattren-12

MATERIAL:

Stainless steel sheet | Aluminum | Corten steel

BORDER THICKNESS:

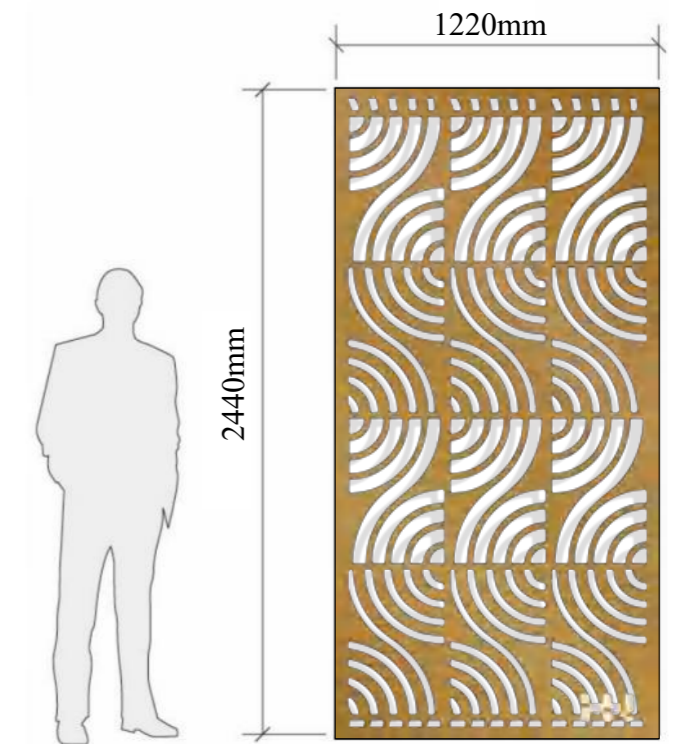
1.5-3.0mm

SIZE CHOICE:

2440mmX1220mm
3050mmX1220mm
2000mmX1000mm
3000mmX1500mm
Customized

APPLICATION:

Divider | Cladding | Ceiling | Column etc



3-PANEL REPEAT



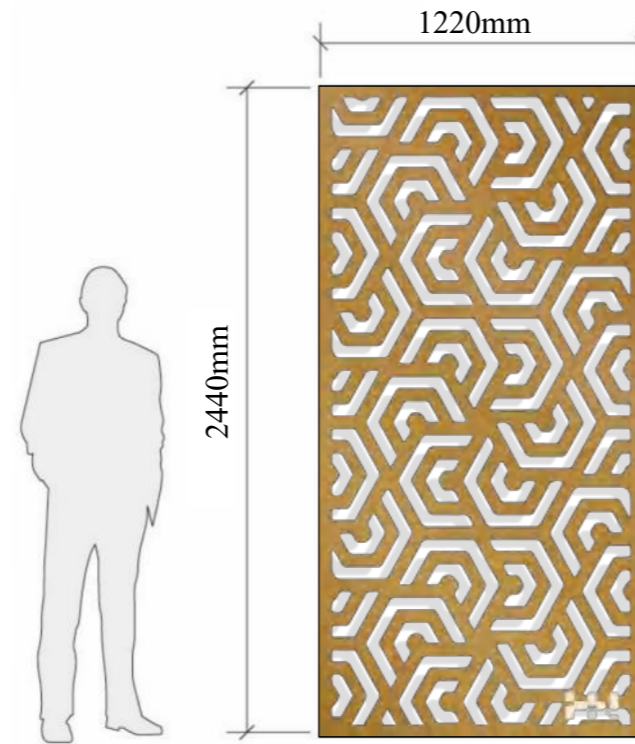
Pattren-13

MATERIAL:
Stainless steel sheet | Aluminum | Corten steel

BORDER THICKNESS:
1.5-3.0mm

SIZE CHOICE:
2440mmX1220mm
3050mmX1220mm
2000mmX1000mm
3000mmX1500mm
Customized

APPLICATION:
Divider | Cladding | Ceiling | Column etc



3-PANEL REPEAT



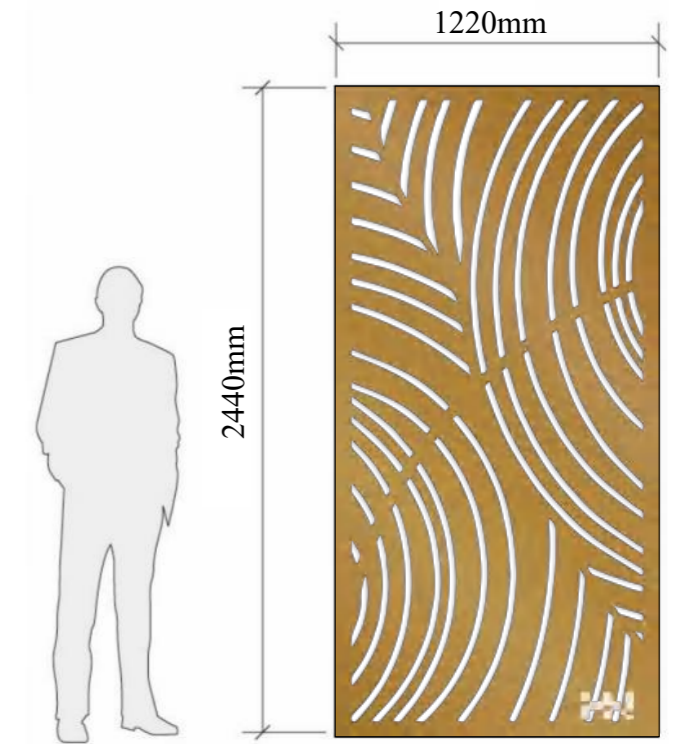
Pattren-14

MATERIAL:
Stainless steel sheet | Aluminum | Corten steel

BORDER THICKNESS:
1.5-3.0mm

SIZE CHOICE:
2440mmX1220mm
3050mmX1220mm
2000mmX1000mm
3000mmX1500mm
Customized

APPLICATION:
Divider | Cladding | Ceiling | Column etc



3-PANEL REPEAT



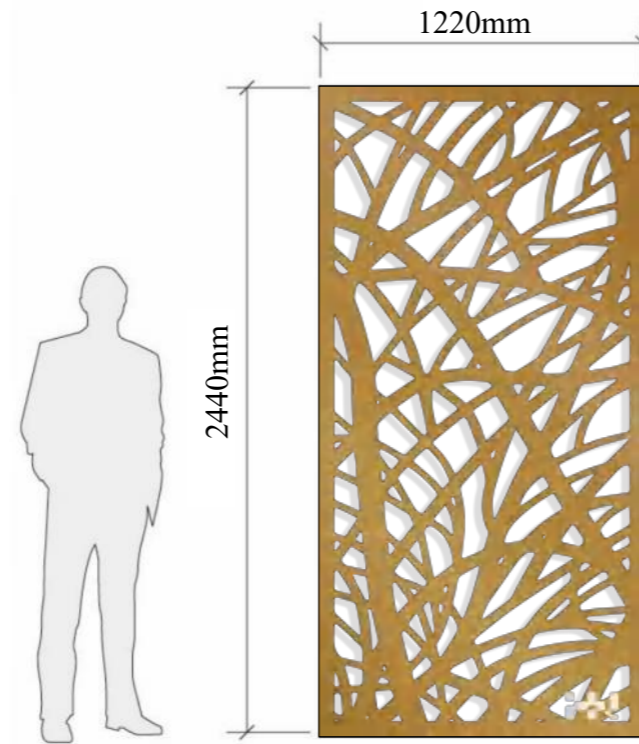
Pattren-15

MATERIAL:
Stainless steel sheet | Aluminum | Corten steel

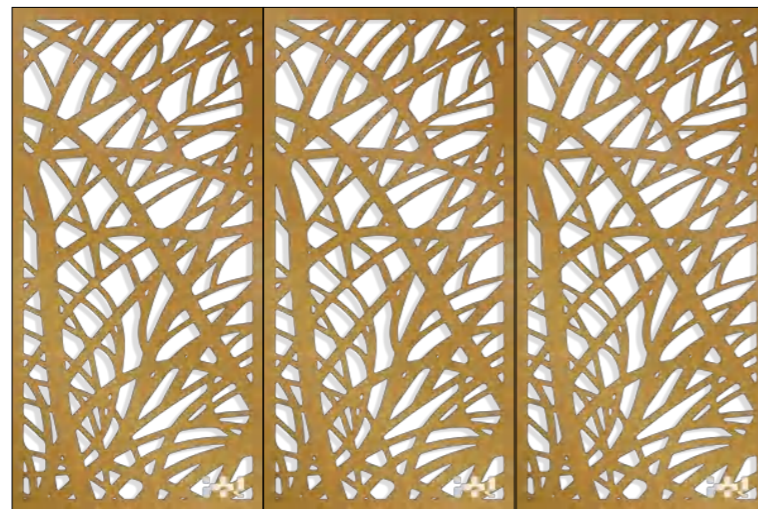
BORDER THICKNESS:
1.5-3.0mm

SIZE CHOICE:
2440mmX1220mm
3050mmX1220mm
2000mmX1000mm
3000mmX1500mm
Customized

APPLICATION:
Divider | Cladding | Ceiling | Column etc



3-PANEL REPEAT



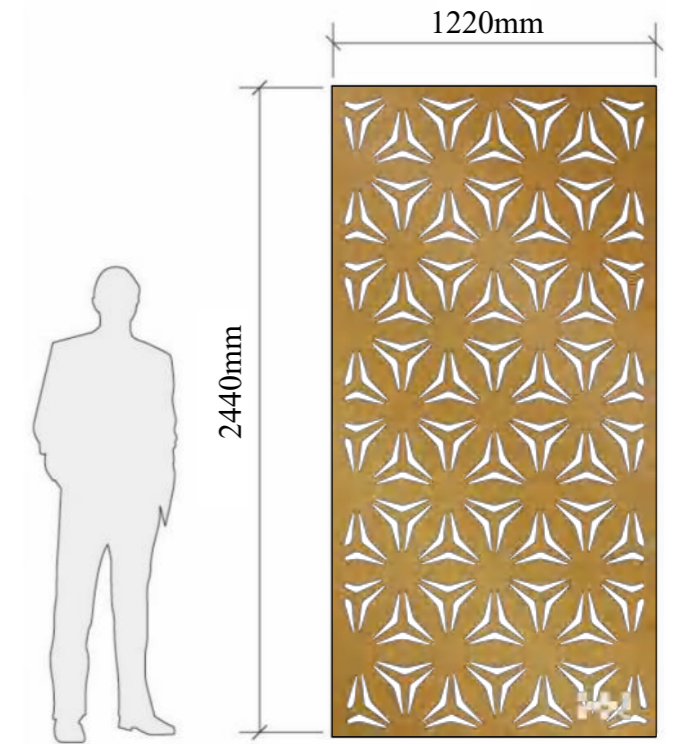
Pattren-16

MATERIAL:
Stainless steel sheet | Aluminum | Corten steel

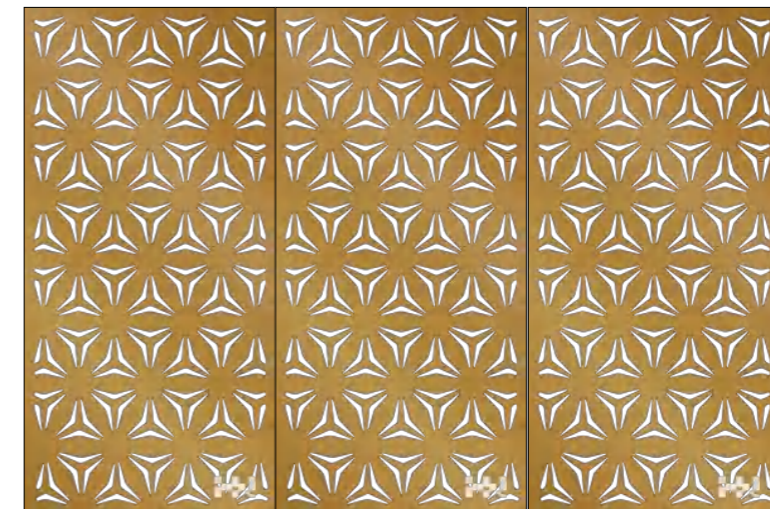
BORDER THICKNESS:
1.5-3.0mm

SIZE CHOICE:
2440mmX1220mm
3050mmX1220mm
2000mmX1000mm
3000mmX1500mm
Customized

APPLICATION:
Divider | Cladding | Ceiling | Column etc



3-PANEL REPEAT



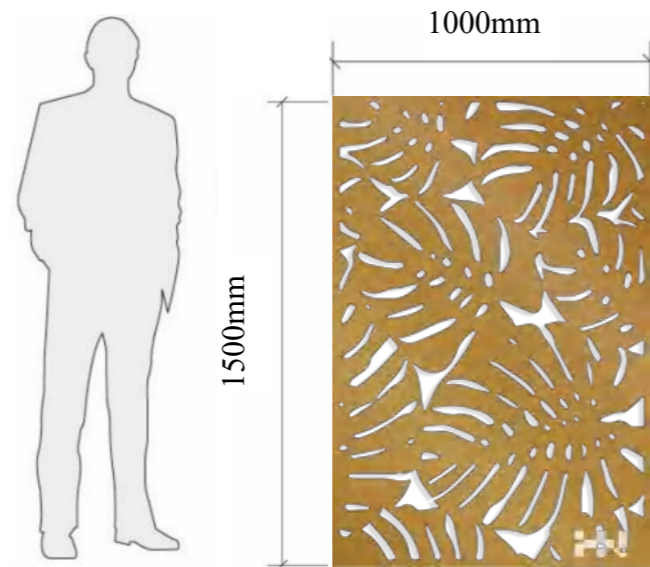
Pattren-17

MATERIAL:
Stainless steel sheet | Aluminum | Corten steel

BORDER THICKNESS:
1.5-1.0mm

SIZE CHOICE:
1500mmX1000mm
Customized

APPLICATION:
Cladding | Divider | Ceiling | Column etc



3-PANEL REPEAT



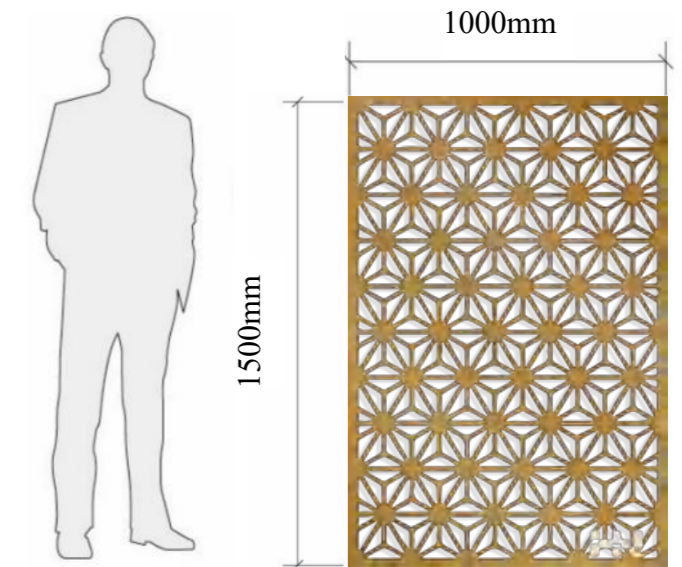
Pattren-18

MATERIAL:
Stainless steel sheet | Aluminum | Corten steel

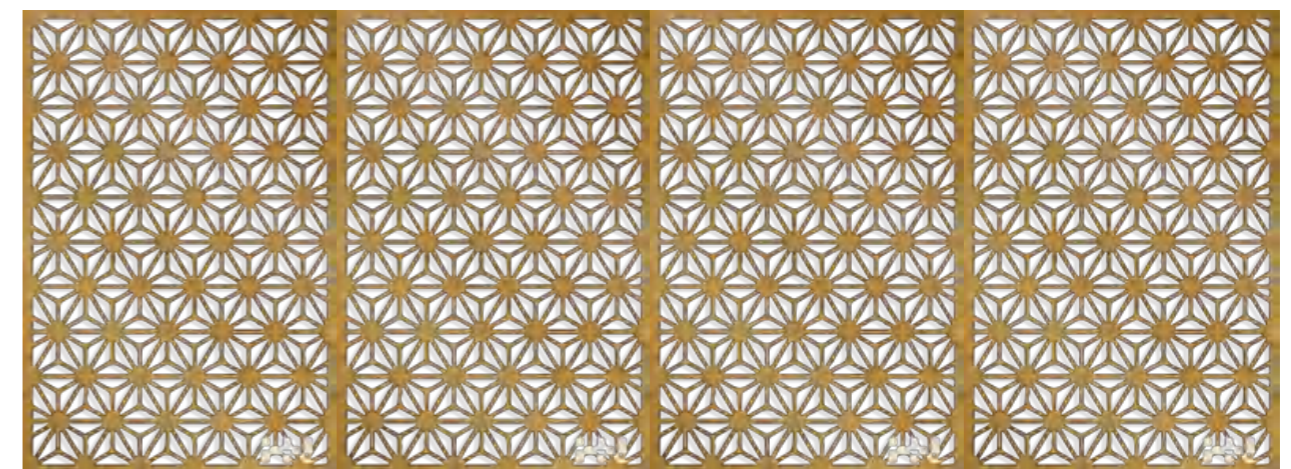
BORDER THICKNESS:
1.5-1.0mm

SIZE CHOICE:
1500mmX1000mm
Customized

APPLICATION:
Cladding | Divider | Ceiling | Column etc



3-PANEL REPEAT



Pattren-19

MATERIAL:

Stainless steel sheet | Aluminum | Corten steel

BORDER THICKNESS:

1.5-1.0mm

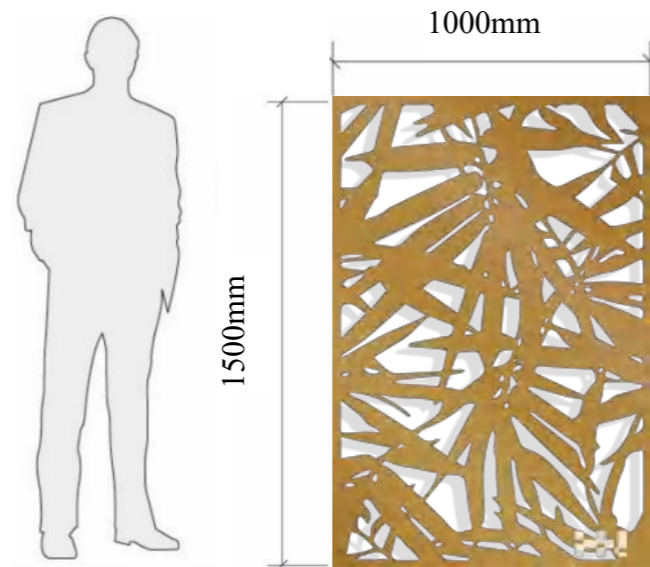
SIZE CHOICE:

1500mmX1000mm

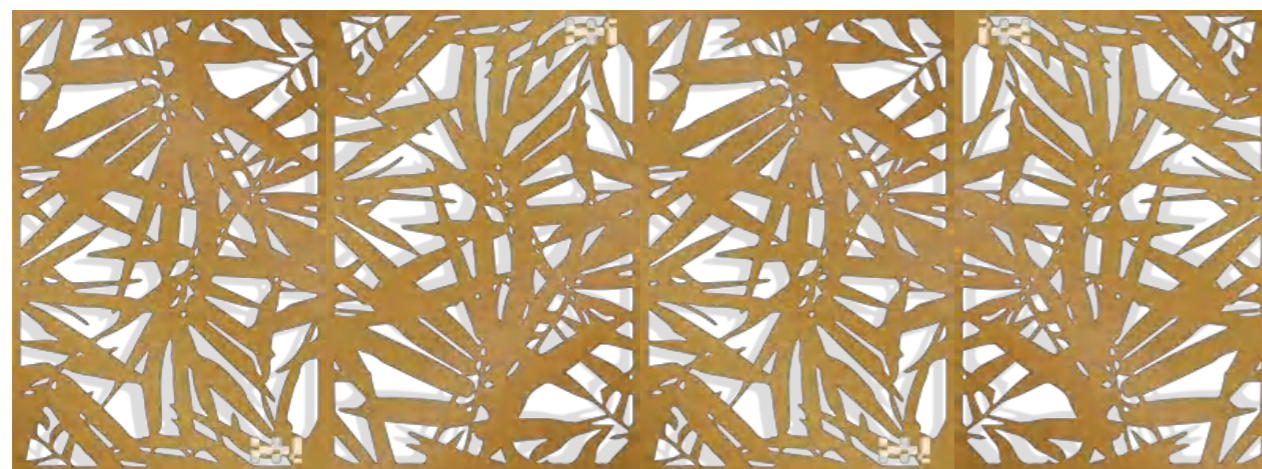
Customized

APPLICATION:

Cladding | Divider | Ceiling | Column etc



3-PANEL REPEAT



Pattren-20

MATERIAL:

Stainless steel sheet | Aluminum | Corten steel

BORDER THICKNESS:

1.5-1.0mm

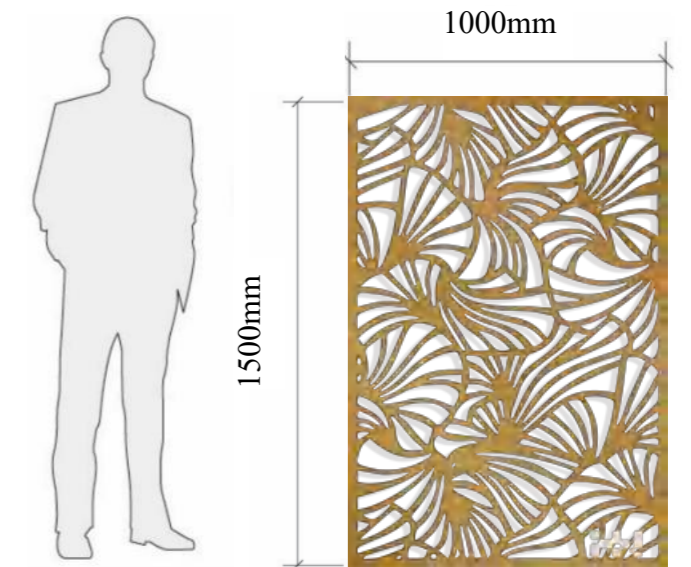
SIZE CHOICE:

1500mmX1000mm

Customized

APPLICATION:

Cladding | Divider | Ceiling | Column etc



3-PANEL REPEAT



Pattren-21

MATERIAL:

Stainless steel sheet | Aluminum | Corten steel

BORDER THICKNESS:

1.5-1.0mm

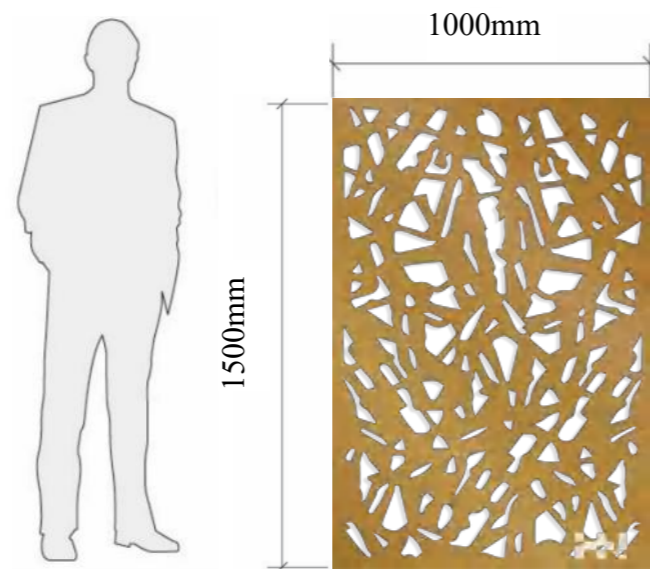
SIZE CHOICE:

1500mmX1000mm

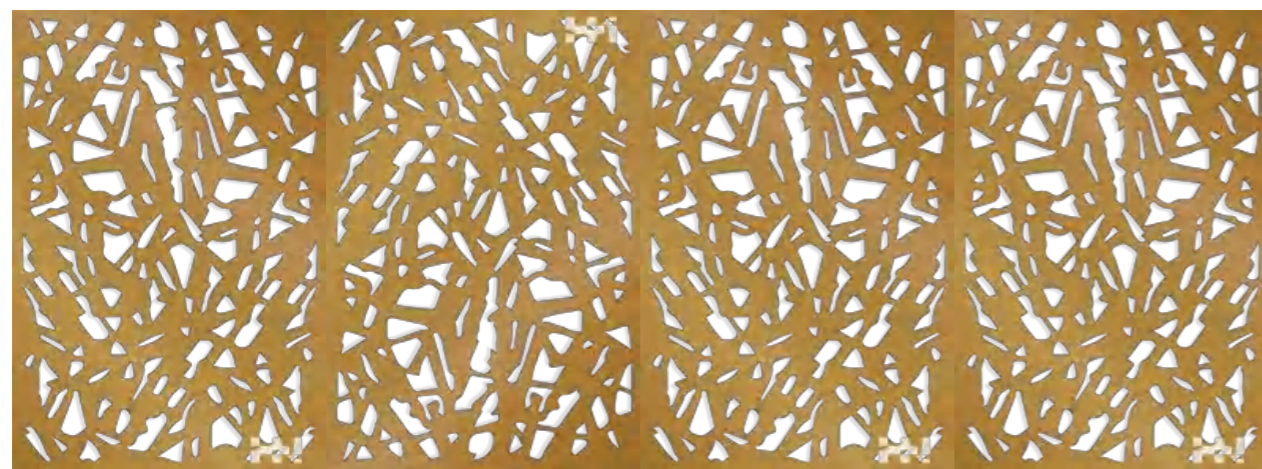
Customized

APPLICATION:

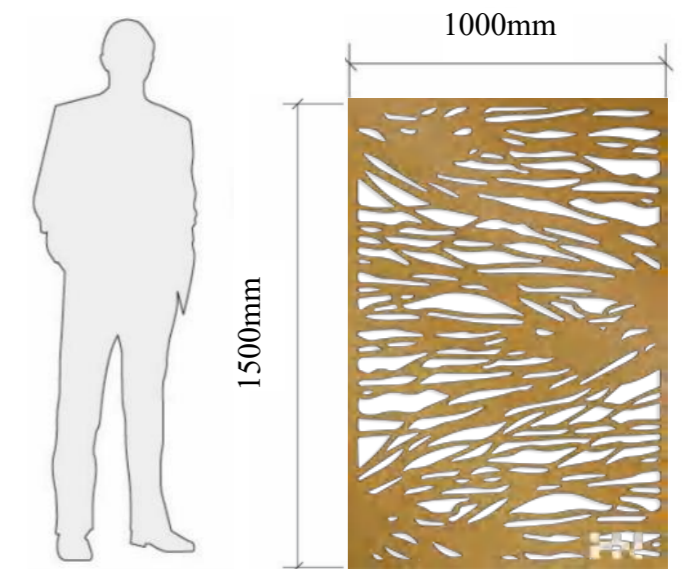
Cladding | Divider | Ceiling | Column etc



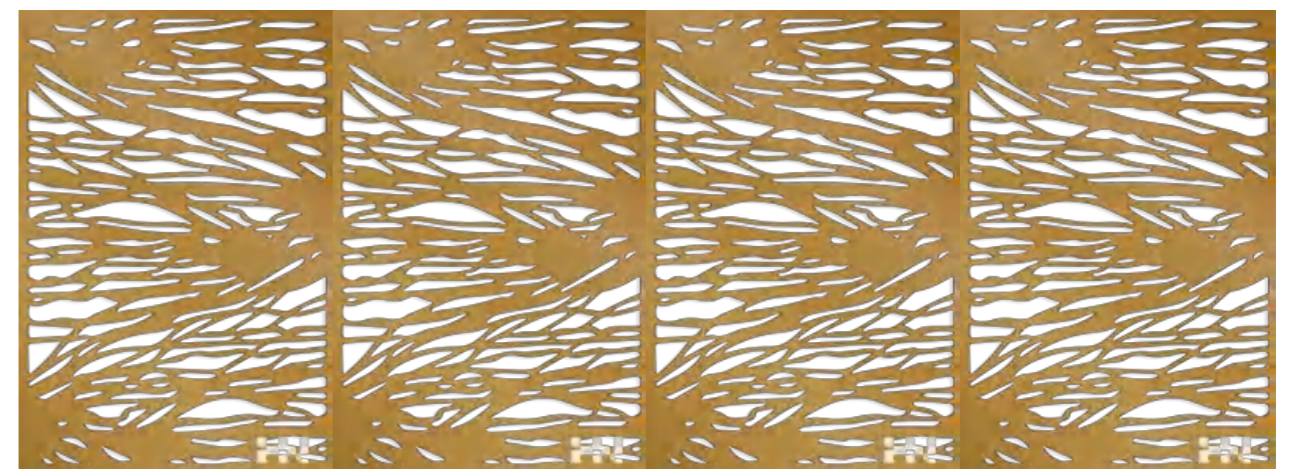
3-PANEL REPEAT



Pattren-22



3-PANEL REPEAT



Material choice

Stainless steel :

Stainless steel differs from carbon steel by the amount of chromium present. Stainless steel does not rust, stain or easily corrode like a regular steel, it takes low maintenance which is why it is perfect material for many purposes. Stainless steel has both practical and aesthetic purpose.

Steel in general is easy to bend and weld to fit everywhere. Steel panels can be used both inside and outside, it comes with brushed surface and the colors and effects are numerous.

There is usually three type of stainless steel for choice – 201/304/316, 201 and 304 is usually used for inside. 316 is used for outside and by the sea.

Maximum panel size: 3000mm * 1500mm

Thickness: 0.3-3.0mm– other thickness on request

Finish: Brushed, #4 Finish, PVD coating, Sandblasted etc.



These are our regular colors, for more colors, please download our catalogue
Accept color customization, similarity can be more than 90%

Aluminum :

Aluminum is a light weight material, it has low density and a natural ability to resist corrosion. Aluminum and its alloys are widely used in a variety of products and industries: in construction, packaging, in households, for making foils, cans and all other items that require a strong but light material.

Aluminum has about one-third the density and stiffness of steel. It is quite flexible and easy to work with. One of many advantages of aluminum is that it can form any shape and size, so besides its functionality it can serve as a decorative element, too. Aluminum needs to be protected prior exposing it to the internal conditions. If used outside, standard powder coating will not protect the panel if it's directly exposed to weather conditions such as rain, snow, sun light, etc. If you would like to use powder coated aluminum outdoor and directly exposed to weather conditions such as rain, snow, sun light, etc., we can make it happen, we would need to use a special chemical treatment prior to powder coating and it would be considered a customized request.

Browse through our gallery or contact us if you can't find what you are looking for and our team of experts will advise you and help you create a perfect screen for your needs.

Maximum panel size: 3000mm * 1500mm

Thickness: 0.3mm-6.0mm– other thickness on request

Grade:1000/3000/5000 Series

Finish: Powdercoated



Corten steel :

Corten Steel is a high strength weathering steel which forms a stable, attractive rust-like appearance when exposed to weather. The panels are suitable mostly for outdoor use with a variety of applications.

Unlike most metals, Corten or weathering steel is designed to form a rust patina when exposed to the weather elements. A layer of rust forms on the outer surface and acts as a protective coating. The color and extent of the rust effect depends on the elements it is exposed to, and will vary from panel to panel.

Concrete, stone and unglazed brick may suffer from oxide staining when in contact with weathering steel. Connections to dissimilar materials, such as zinc or cadmium plated bolts, should be avoided.

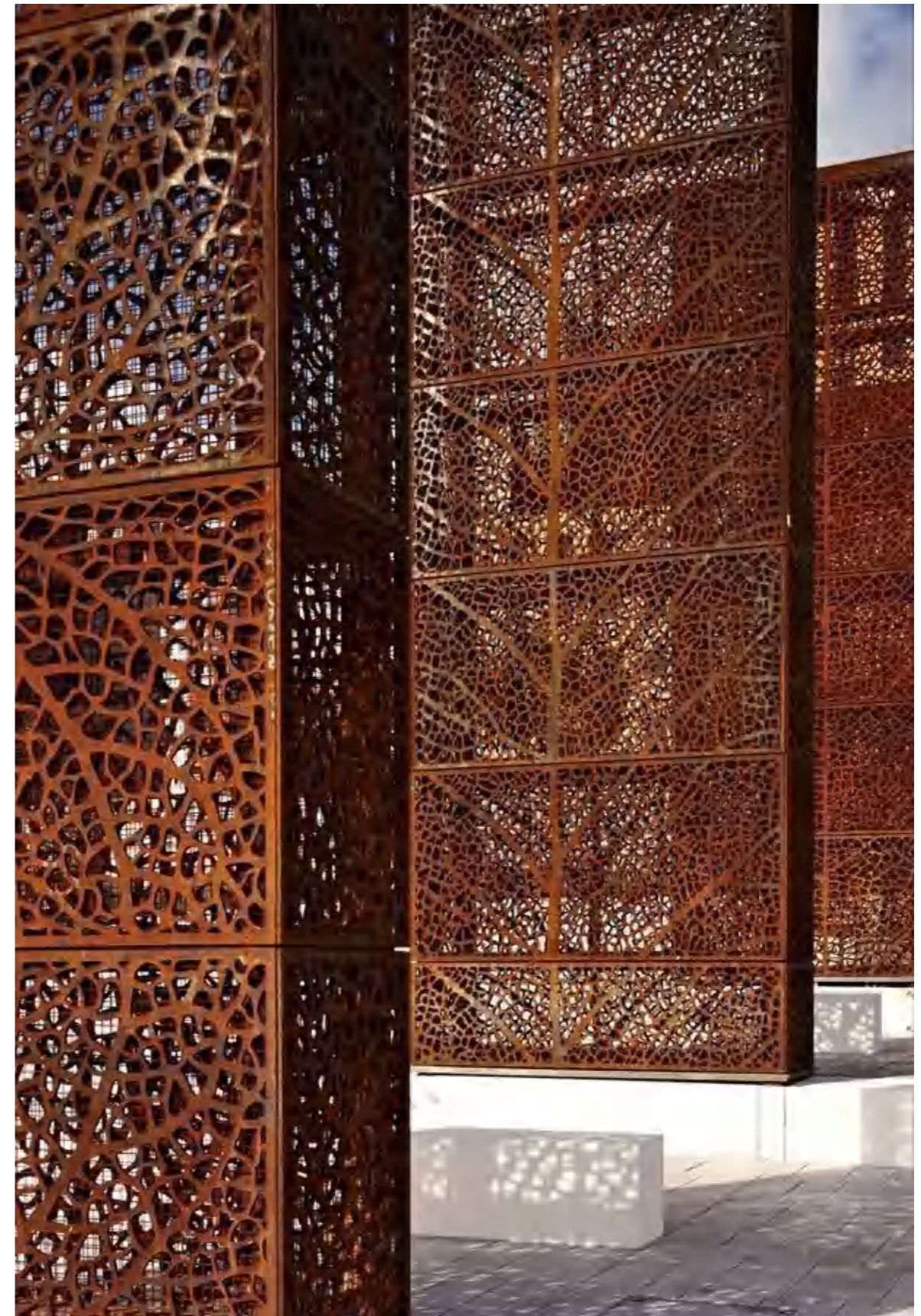
Grade:Corten A/B/SPA-H

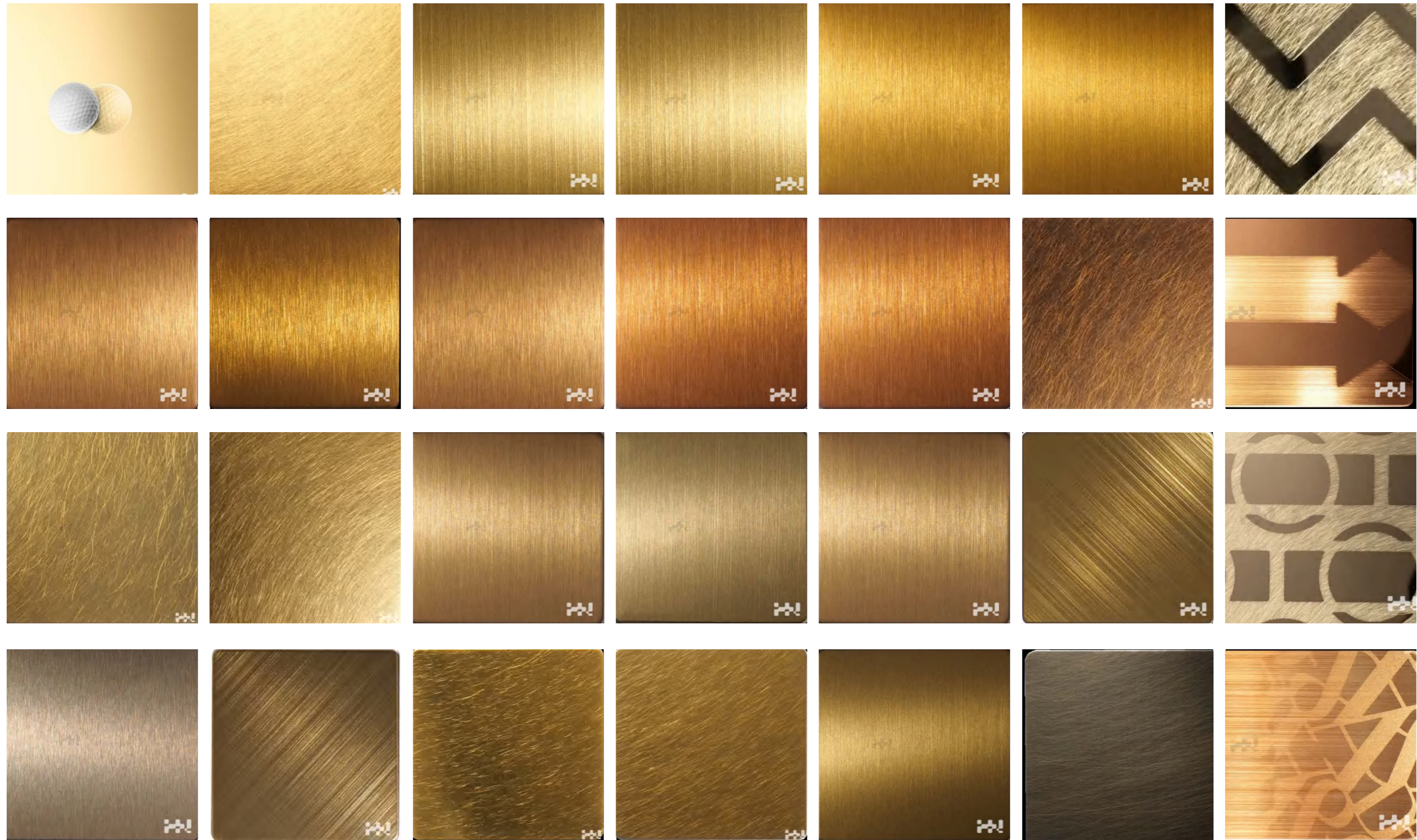
Thickness:Hot rolled:3mm~100mm

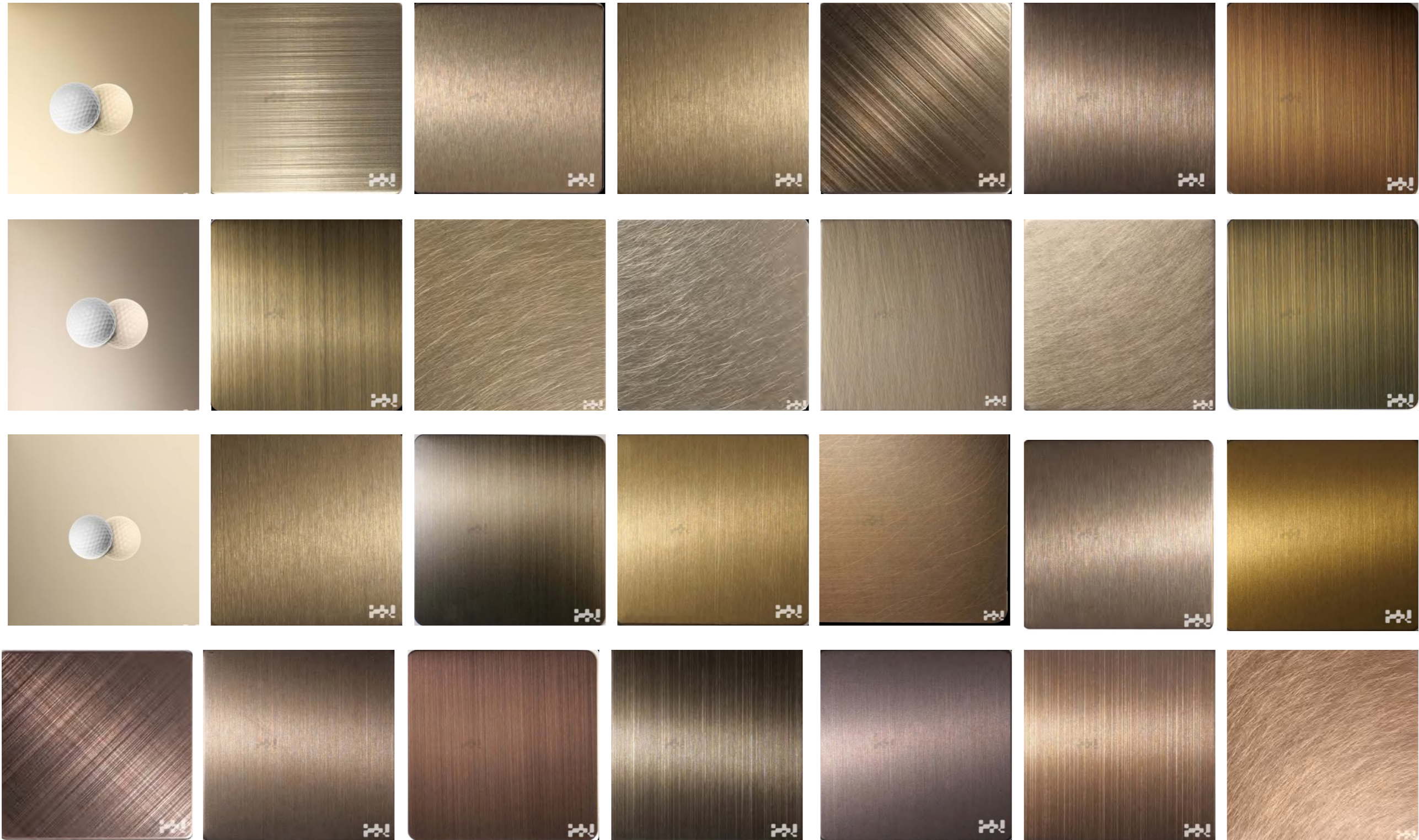
Width:600mm-2000mmor as customer's requirements

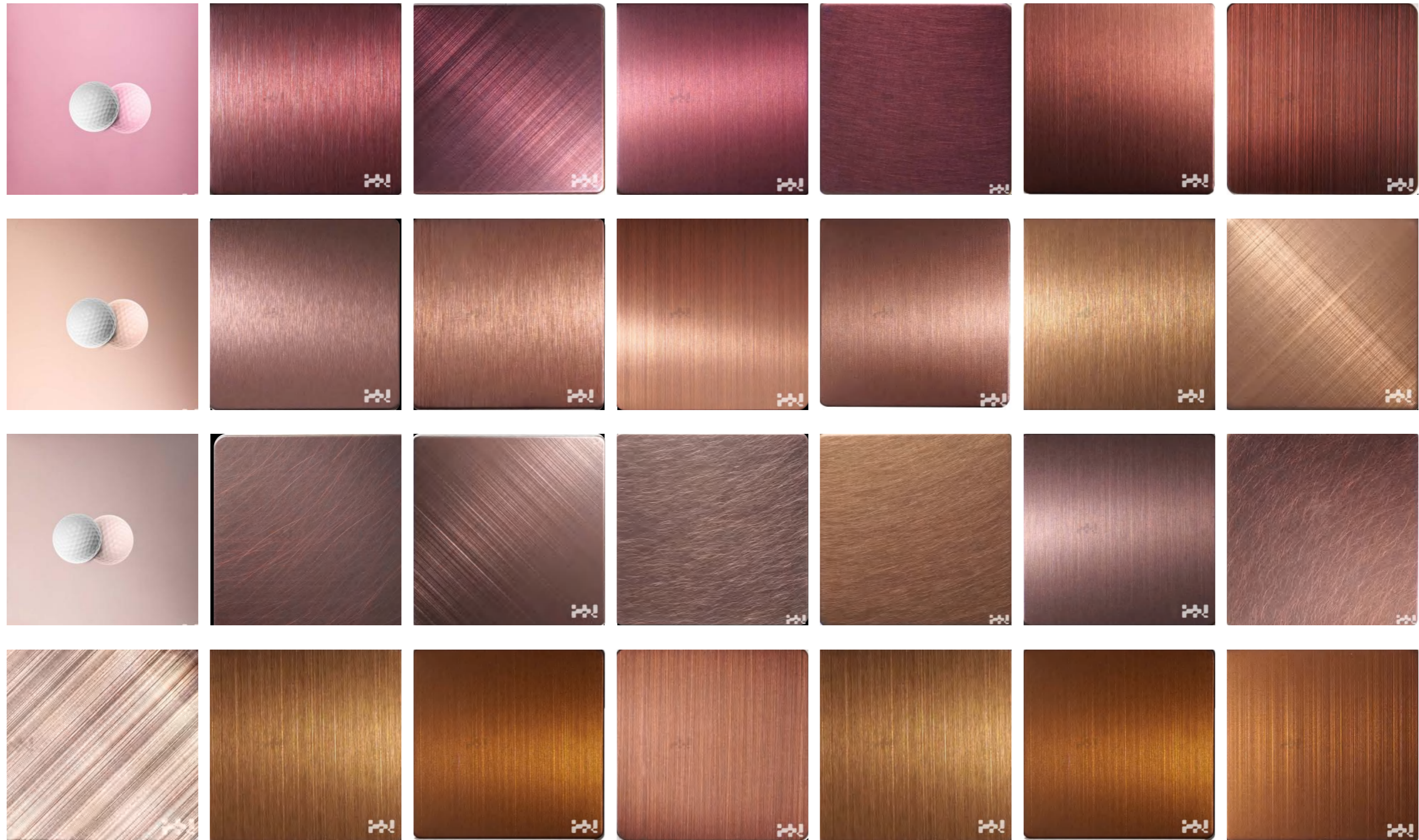
Length: 1000mm to 12000mm or as customer's request

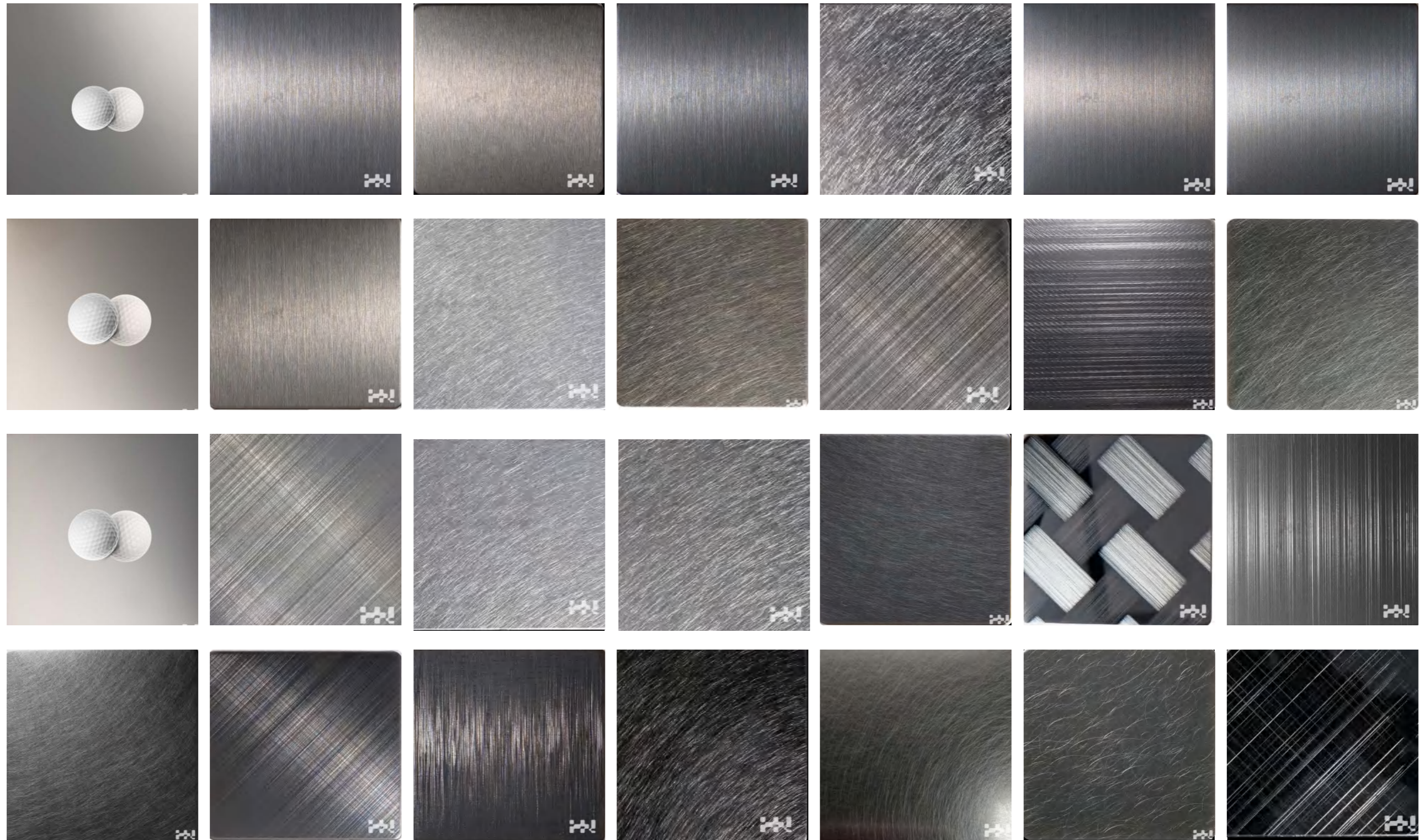
Finish: Rustic

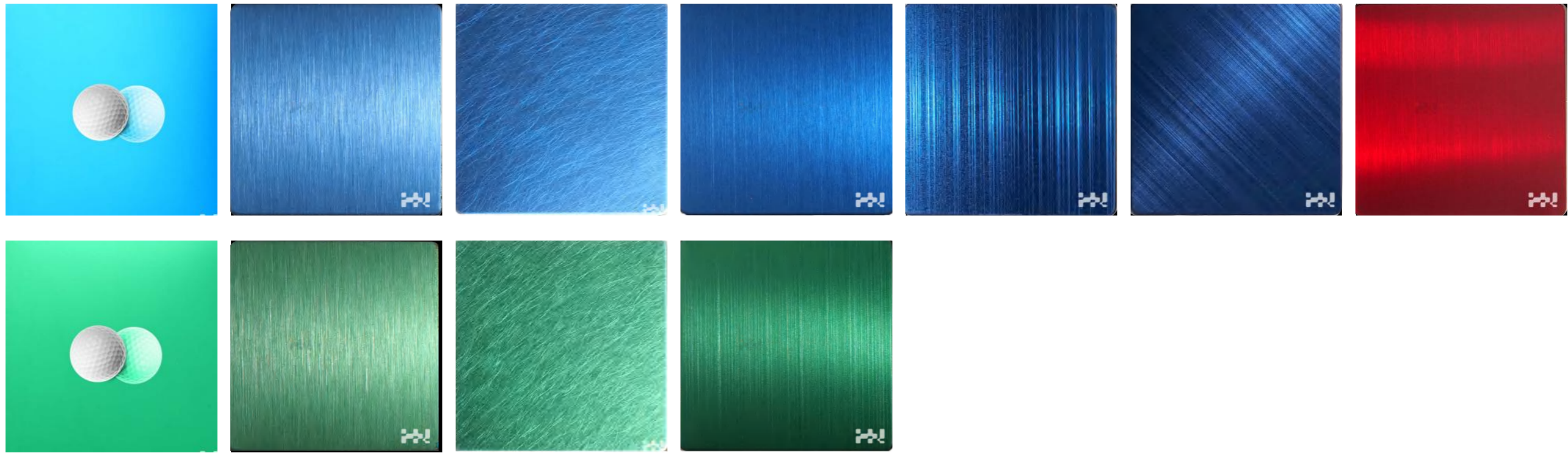












Material Custom-made Service

Already have a pattern in mind? Don't worry. We can customize according to your sample. We have rich experience in customizing materials with more than 90% similarity





Design Support

Custom design:

At H&N DECO METAL, we can customize our designs to suit the space you need to fill. Browse through our projects and get inspired by previous custom projects, or alternatively, if you have your own vision, get in touch and we can make it a reality.

The product will be made to order and will take approximately 8 weeks to be designed, cut, bent and packed. We will confirm all details, including expected date of despatch following receipt of the order. Unless otherwise negotiated, H&N DECO METAL reserves the right to reproduce any custom panels.

Have further questions or interested in a custom size? We pride ourselves on meeting our clients specific requirements. Please fill in an online enquiry. Choose from our range of existing patterns or allow us to work with you to create a personalized design to add that touch of individuality to your project.

“Process – Simply present us with your design, or rough idea [this may be a sketch or photo] and our designers will realise your vision. For customized art that impresses, speak with H&N DECO METAL representatives today.”

Lighting:

Laser-cut panels allow light to pass through creating mood and ambiance ideal for every area. But if you want stunning lighting effects, you should consider adding back light to your laser-cut panel. Every screen, whether ready-made or custom-made, can have lighting added. With a small addition of lexan sheet and LED lights we can bring to life not just the screen but the whole room.

Laser cut bamboo pattern panel with lighting, mounted next to a big window of a modern house, beside a swimming pool

The best and most popular way to do this is to let us do the whole process. We will add LED lights behind the screen and install Lexan so the light stays uniformed. You can combine a few different colors or choose only one to be dominant. This is how you will get the best look during a day and add drama at night. Panels like these come with a power supply





海泥金属材料有限公司
HN DECO METAL