

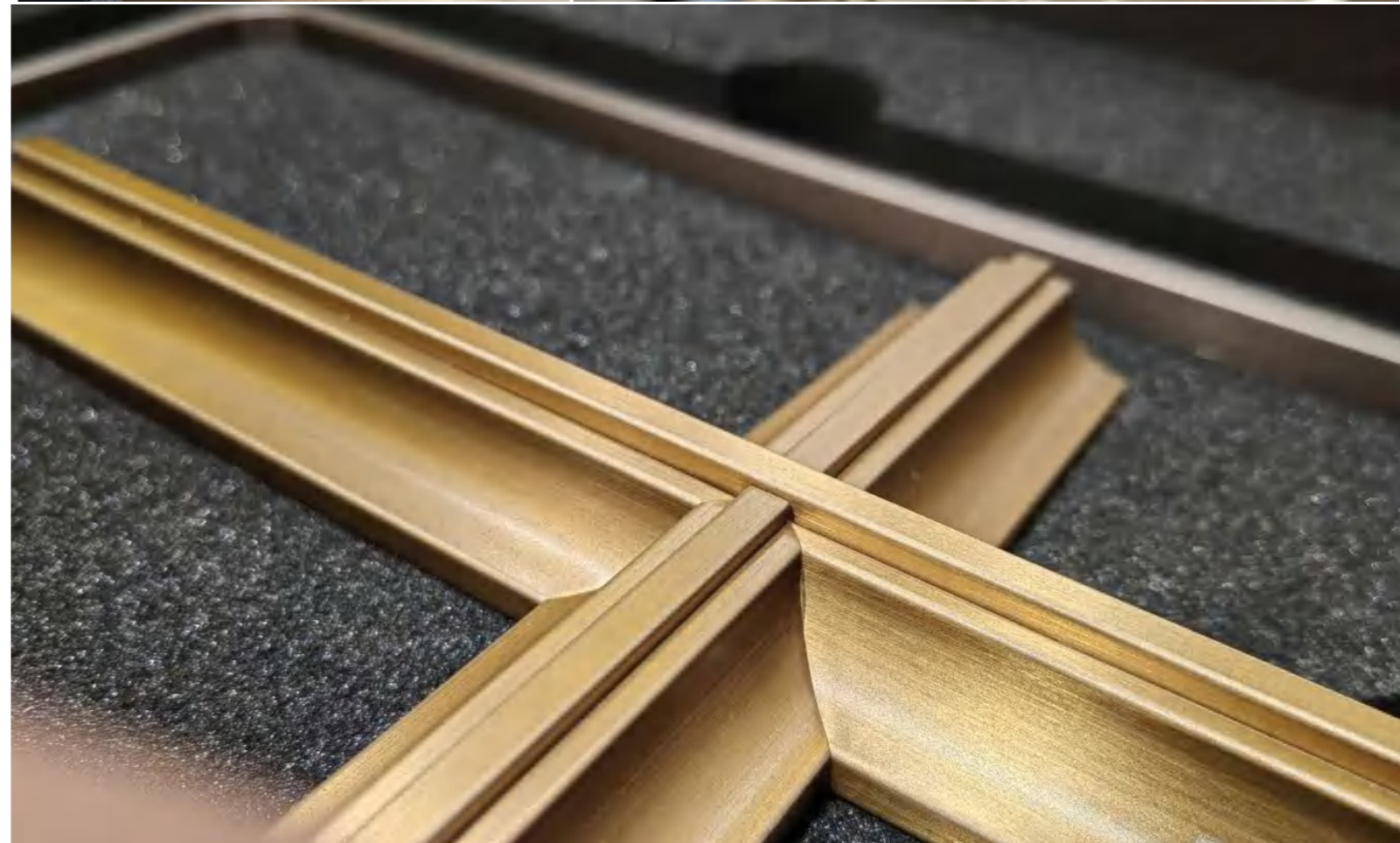


# PRODUCT BROCHURE 2023



# About us

Established in 2011, Foshan H&N Decoration metal Material Engineering Co., Ltd. is a specialized enterprise that provides decorative stainless steel sheets, sheet metal processing, metal structure fabrication, and metal decoration engineering. We create architectural metal products for illuminating industry, hospitality, commercial, workplace, transportation, entertainment, and retail markets, for twelve years, we have successfully helped architects, designers, contractors and homeowners to provide stainless steel materials and total solutions that meet project requirements and budgets.



## STARTED BUSINESS

Mr.Peng Shihong and Ms.Wang Baowei founded the LaoPeng Metal Material Shop in Zhongshan city

2011

## OPEN MIRROR POLISH FACTORY

We have 6 flat plate production lines and 8 coil strip production lines. We are able to provide our customers with plates/coils with different surface effects such as 8K, fine grinding and super fine grinding.

2014

## OPEN LASER CUTTING FACTORY

Start metal work processing such as laser cutting 、 Welding 、 PVDcoating 、 Fabrication 、 Assembling Stations

2019

## OPEN H&N DECO METAL

Provide one stop solution metal work for customers around the world

2022



## Qualifications and Experience

- Third Grade National Architecture Decoration Enterprise and authorized by ISO 9001/2000.
- One of the earliest and the largest manufacturers in China offering all the specialized and standard surface finishing processing.
- Twelve years' specialized production experience, with the ability to control the whole processes, to guarantee the quality and cost, as well as quick delivery.



**Mirror polishing  
Factory(Foshan)**  
Address : No.72 (F5),  
North District, Foshan  
Electronic and Electrical  
Industry Base, Baini Town,  
Sanshui District, Foshan  
City, Guangdong Province,  
China



**Laser cutting  
Factory(Zhongshan)**  
Address : Gusan  
Venture Park, Northeast  
4th Road, Industrial  
Avenue, Zhongshan City,  
Guangdong Province,  
China



**Decometal material  
shop(Zhongshan)**  
Address : F1, Zhenglian  
Shopping Plaza, No.138  
Zhongxing Avenue North,  
Guzhen, Zhongshan City,  
Guangdong Province,  
China

**WHY CHOICE US:**

- 1.Factory Direct: We have two metal products processing plants and one offline metal sales center in China with a total area of 8,000m<sup>2</sup>,Factory direct sales make the price and quality more advantageous
- 2.Quality Control: We build a powerful supply chain,We have a material inspection team to make sure what we receive the material with every decent quality
- 3.Material Diversity: We are one of the largest suppliers of metal materials patterns in the Chinese market.Variety of materials for your design options
- 4.Custom-made Service: We have a professional design team with an average of more than 4 years of design experience.In addition to our standard metal sheet products, we also provide our customers with professional customization services

### METAL DECORATION ENGINEERING

Commercial | Hotel | Office | Show room | Villa | Casino | Integrated Resorts | Food & Beverage

### PRODUCT

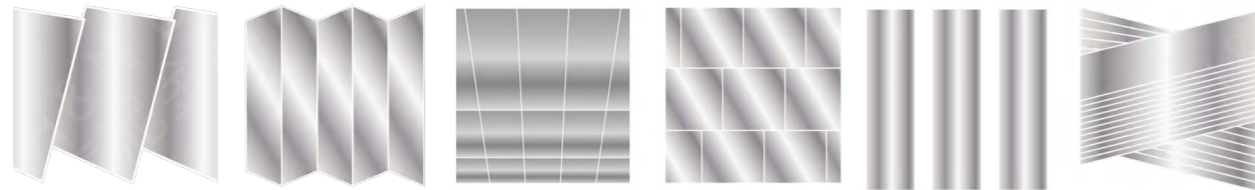
Stainless steel decorative sheet(coil) | Room divider | Metal ceiling | Wall cladding | Column cladding | Wall cabinet | Commercial entrance door | Metal logo etc.

### SURFACE PROCESS

Mirror polish | Brush | Sandblasted | Etching | Perforated | Brass | Antique | Anti finger print(AFP)

### METAL WORK FABRICATION PROCESS

:Laser cutting | Welding | PVDcoating | Fabrication | Assembling Stations



Mirror sheet



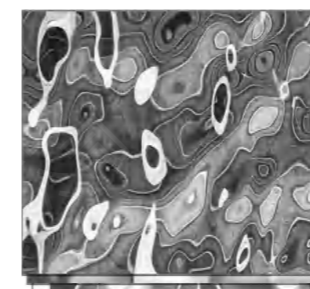
Hairline sheet



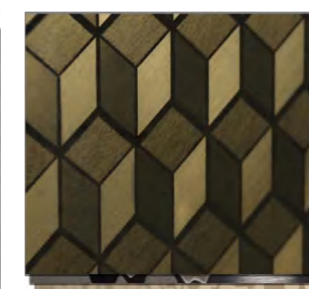
Vibration sheet



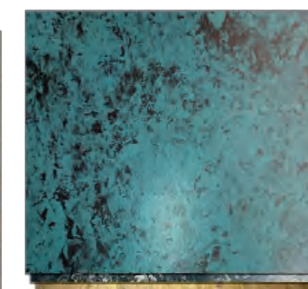
Sandblasted sheet



Stamped sheet



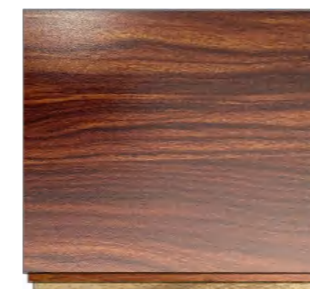
Etching sheet



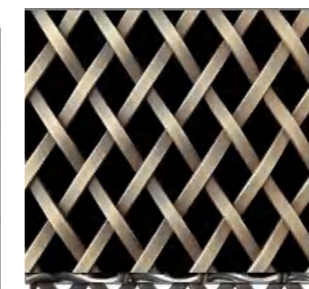
Antique sheet



Patina sheet



Lamination sheet



Wire mesh



Perforated sheet



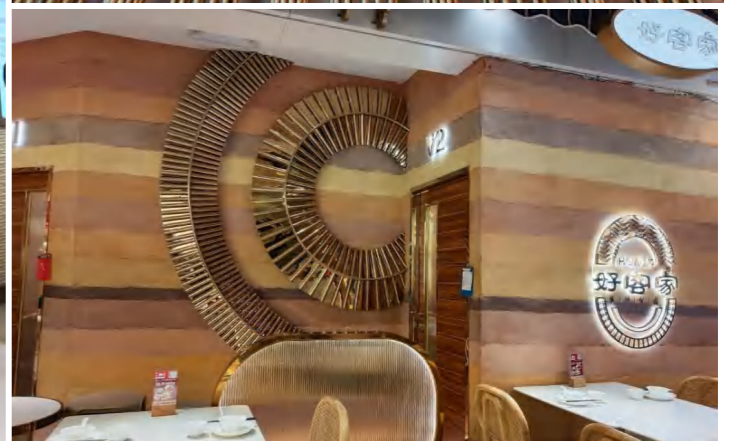
Laser cut sheet

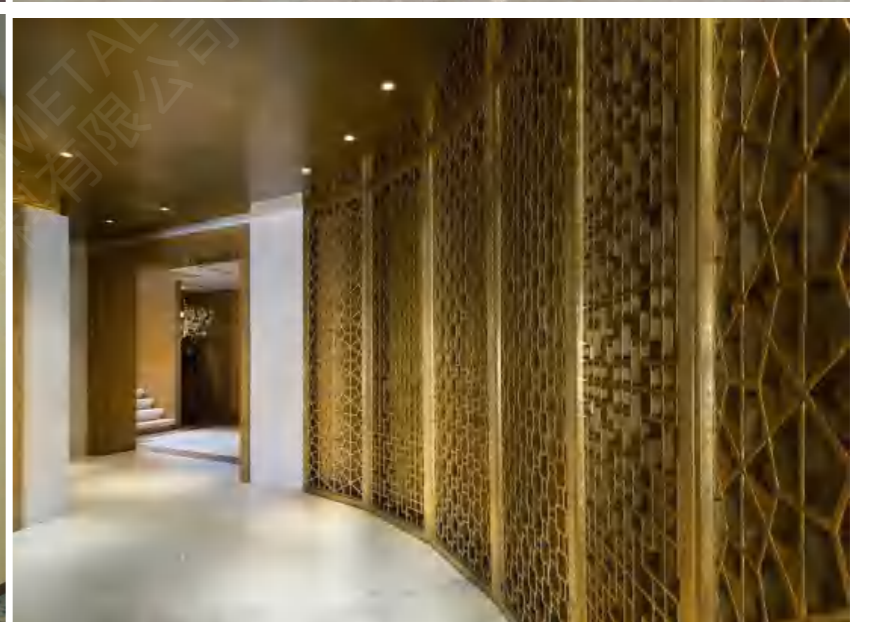
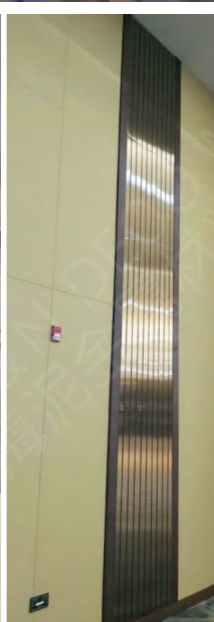
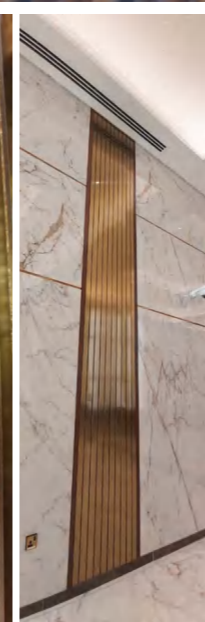
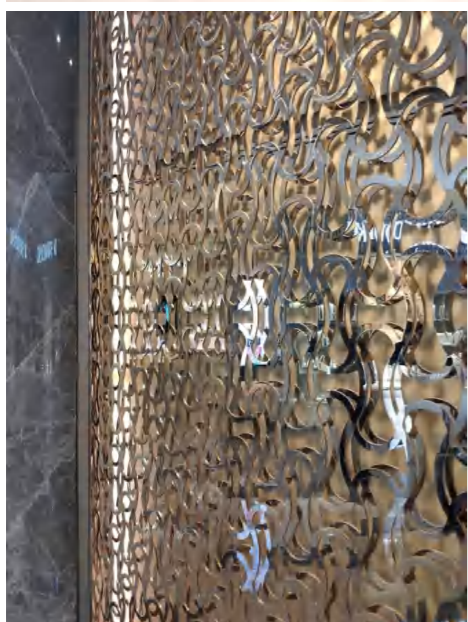
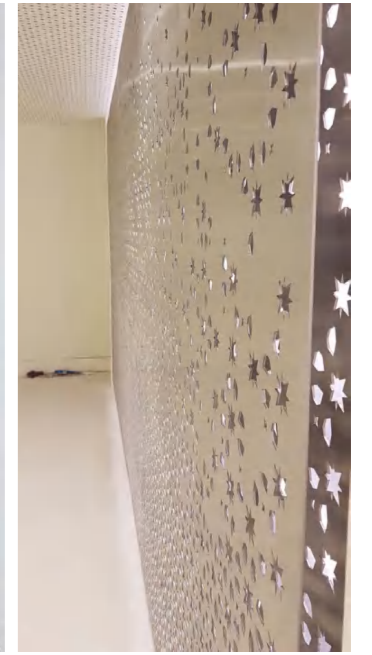
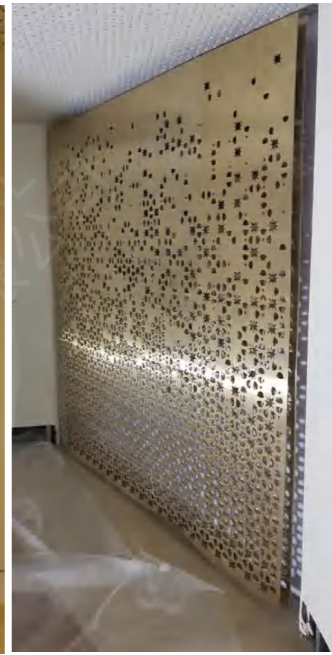
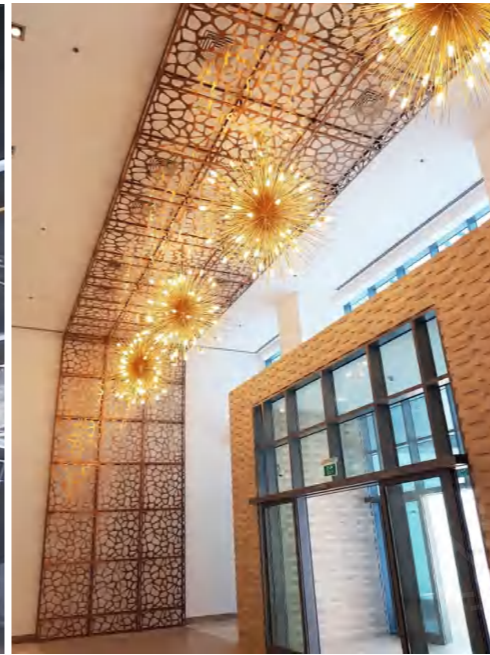
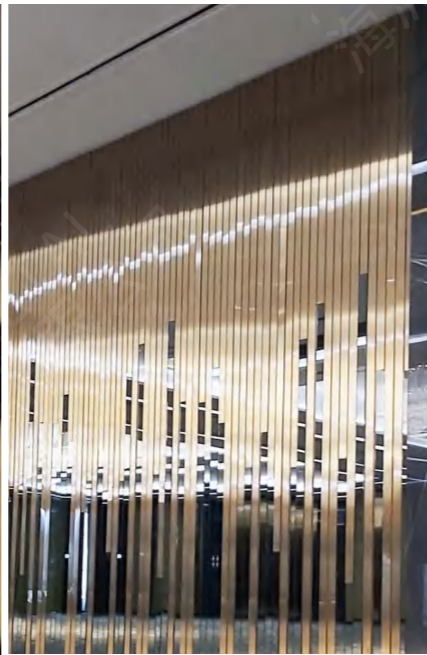
With over two thousand colors and textures to choose from, we can support any design you want.  
Dive deeper: please [H&N MATERIAL CATALOGUE](#)

# Products

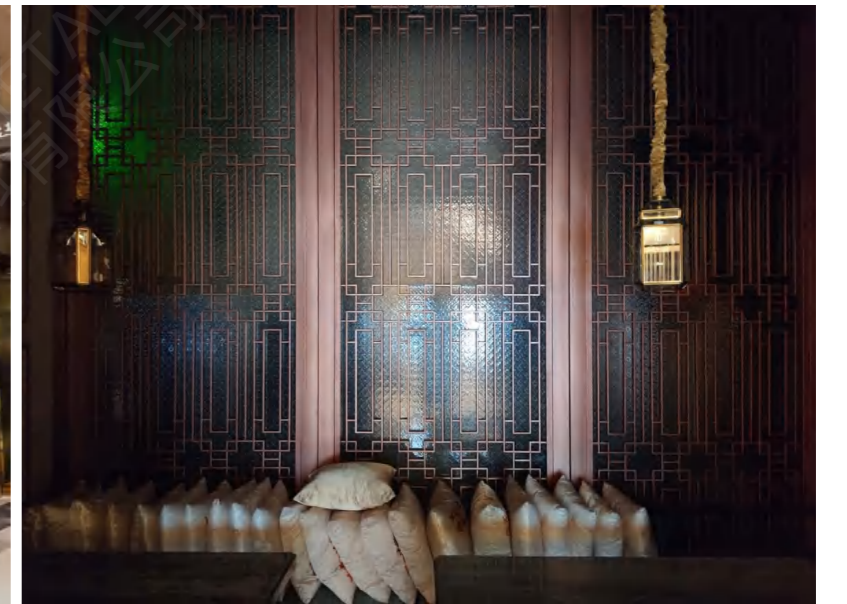
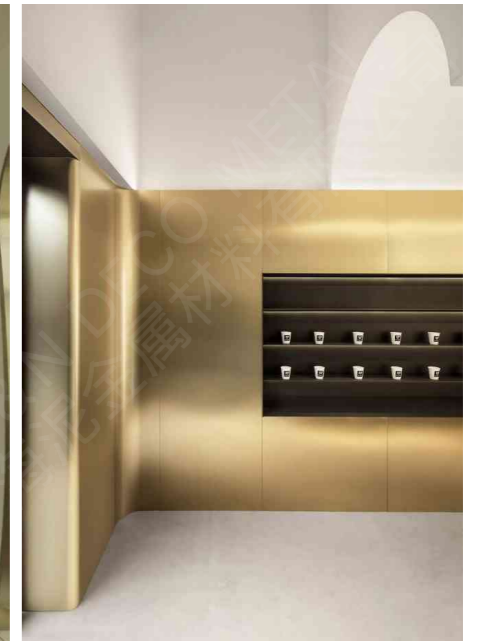
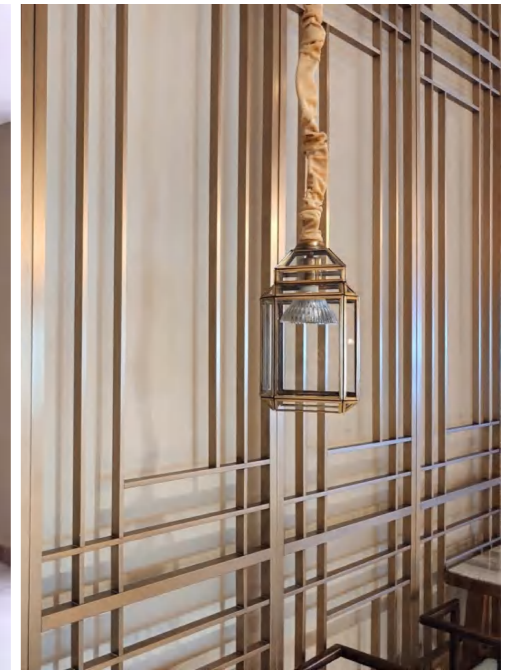
Cladding\Ceiling\Dividers\Cabinet\Door\Strip\Logo\custom







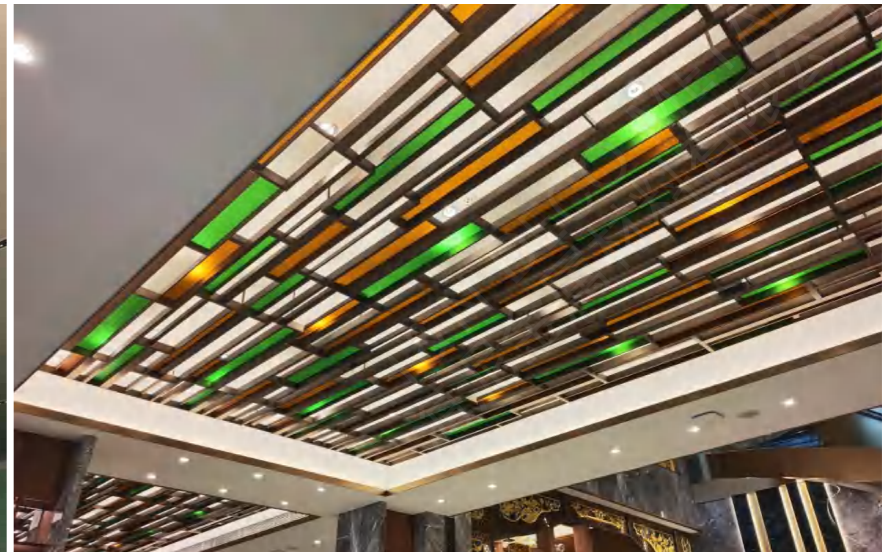
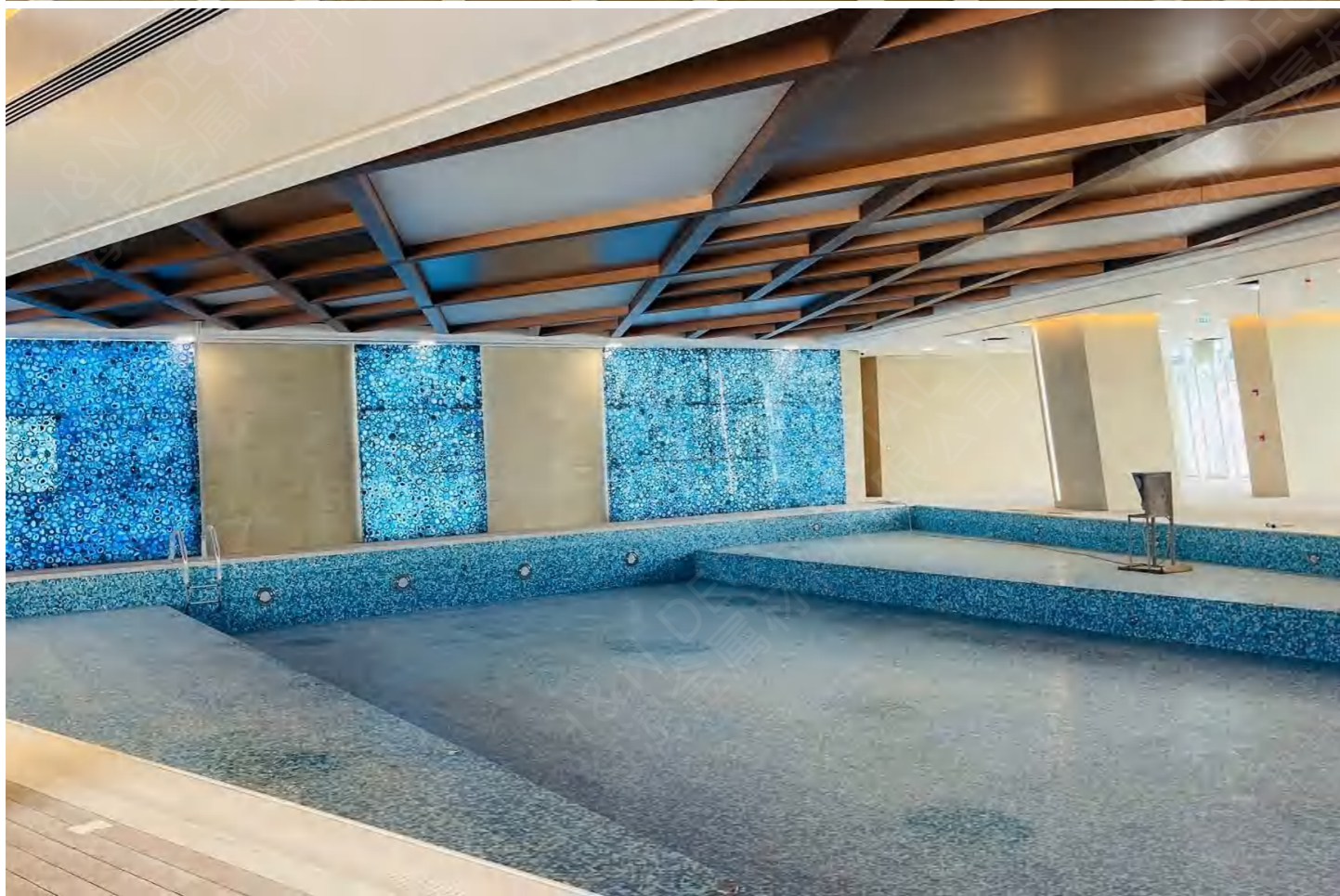


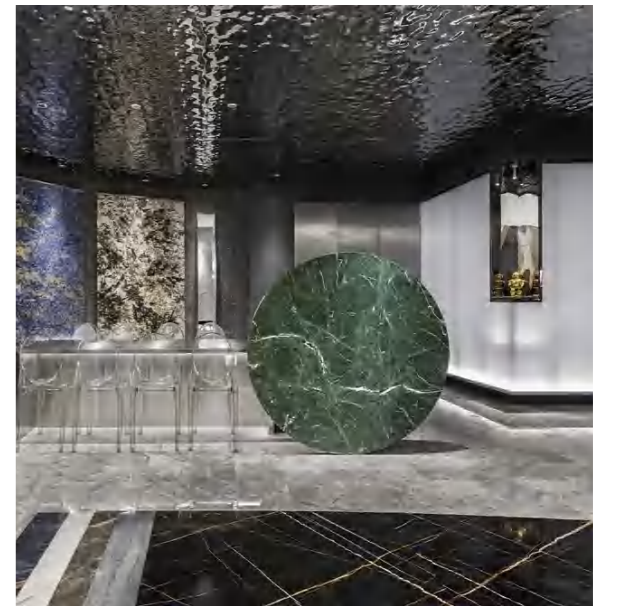
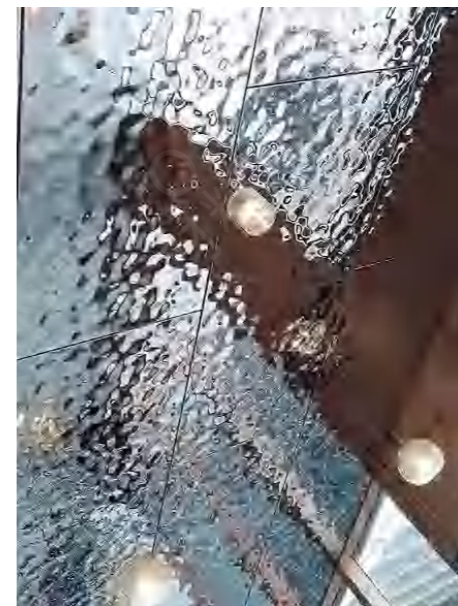
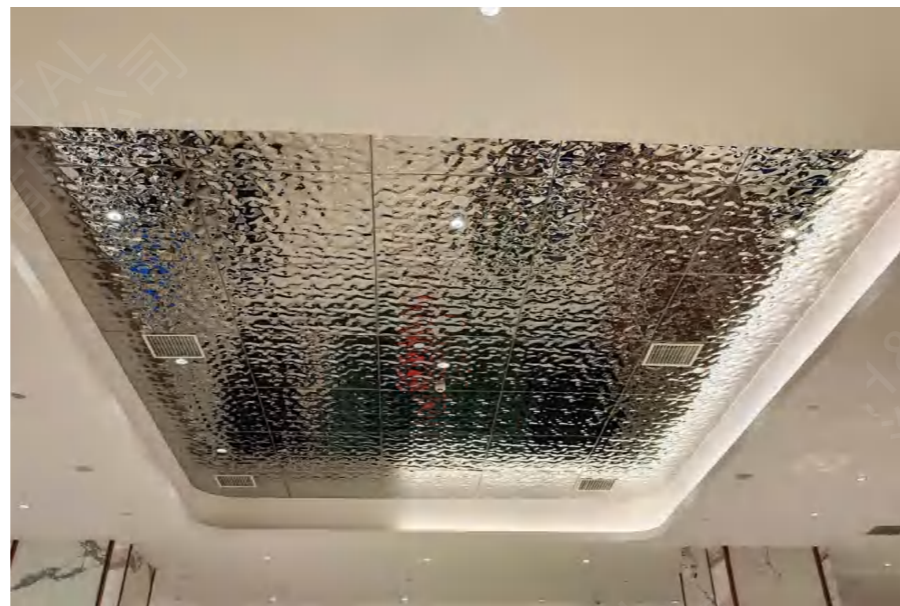


# Products

Cladding\Ceiling\Dividers\Cabinet\Door\Strip\Logo\custom



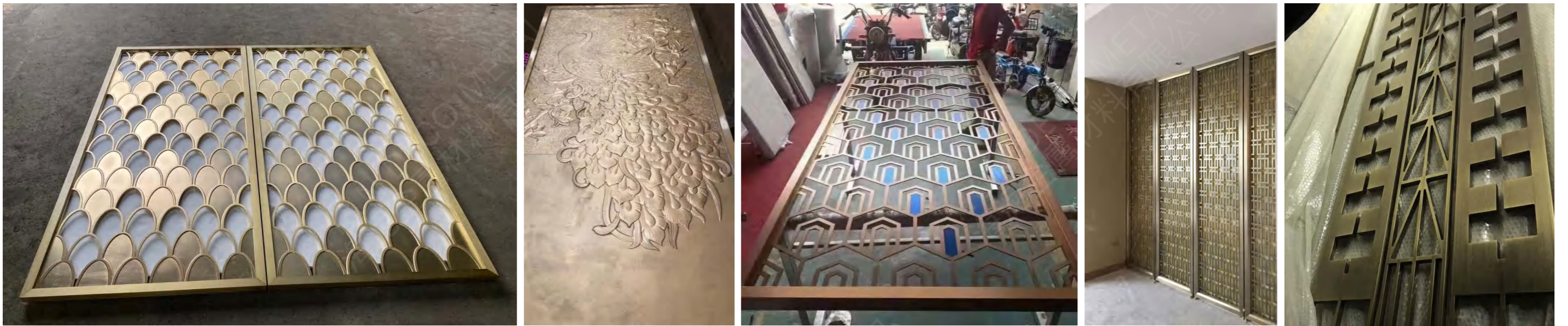


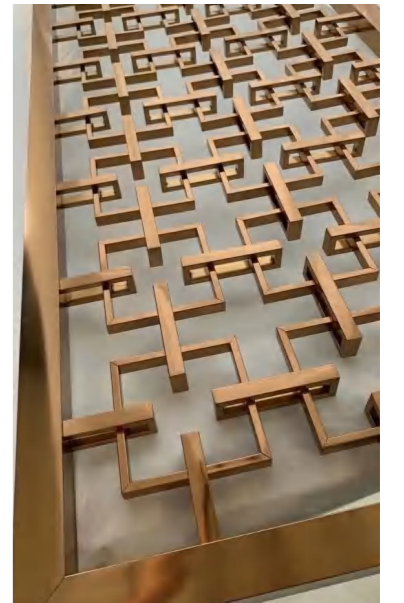
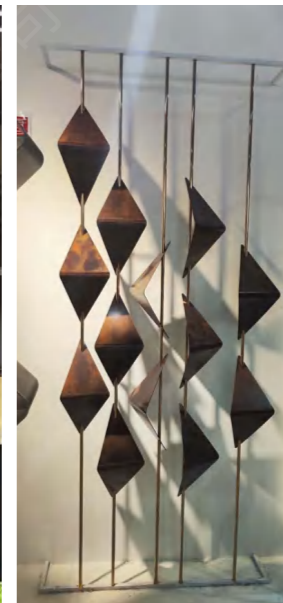
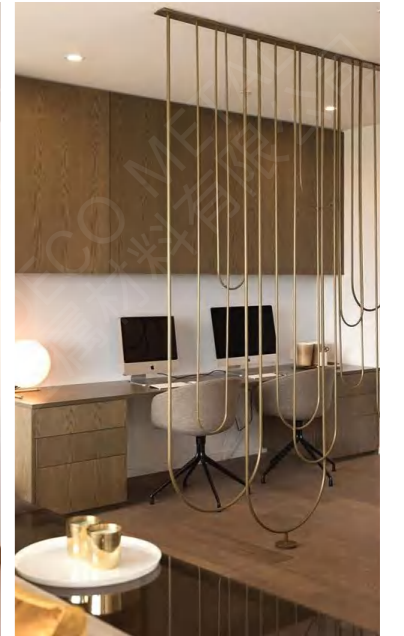
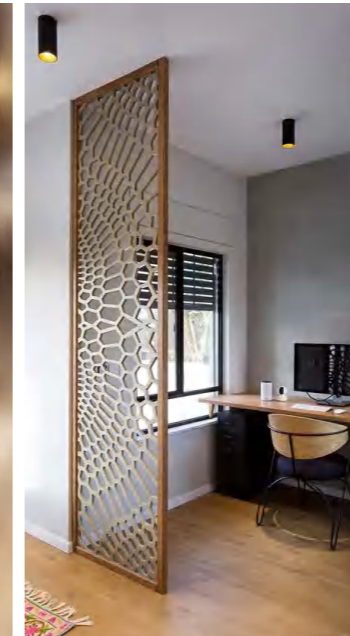


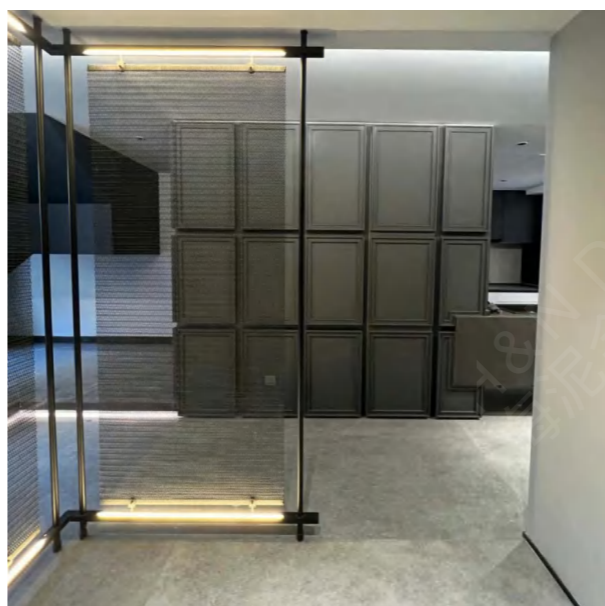
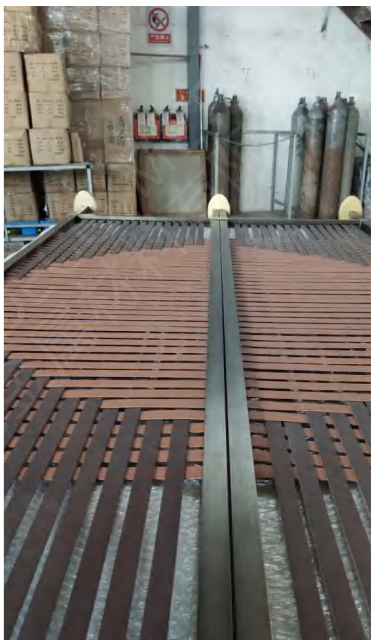
# Products

Cladding\Ceiling\**Dividers**\Cabinet\Door\Strip\Logo\custom

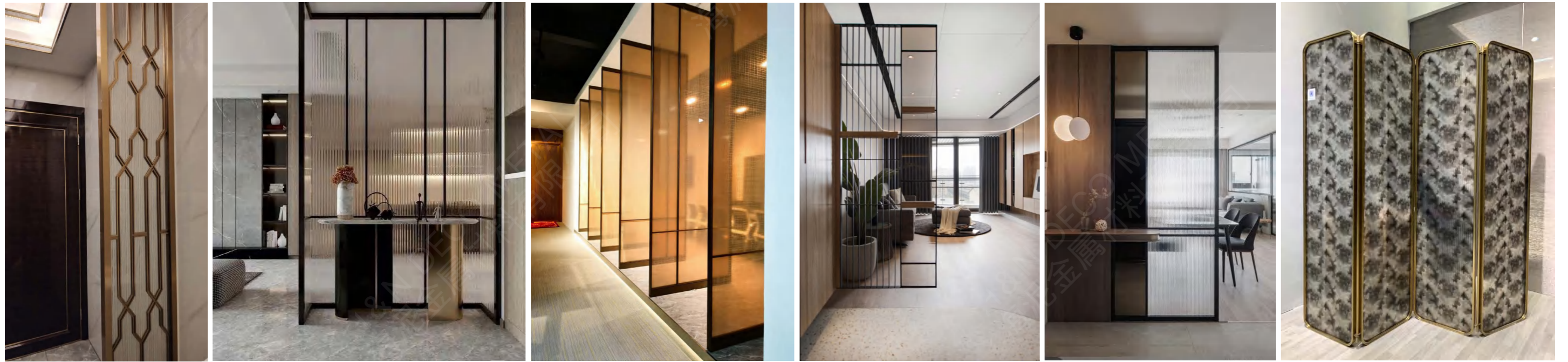








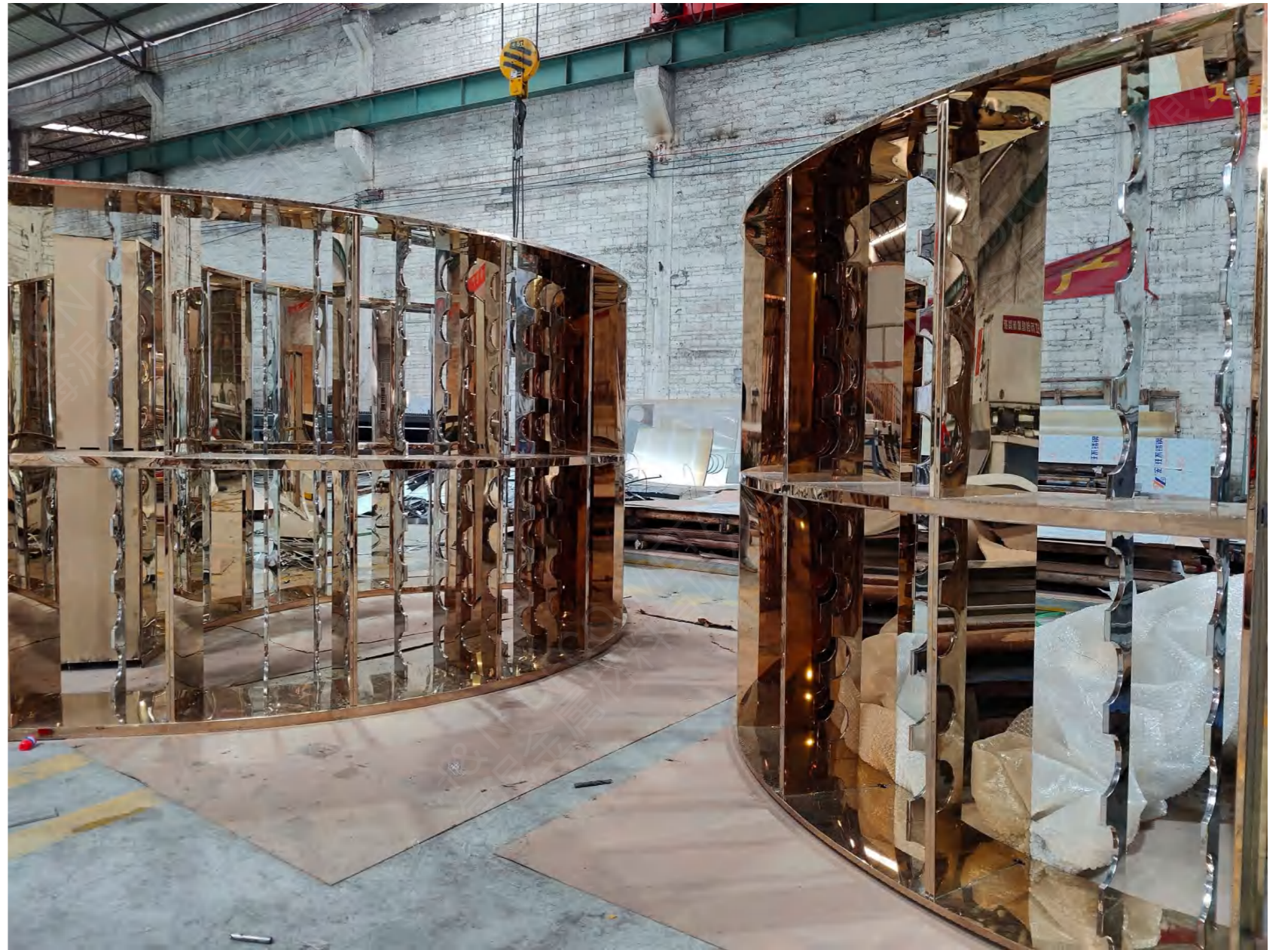
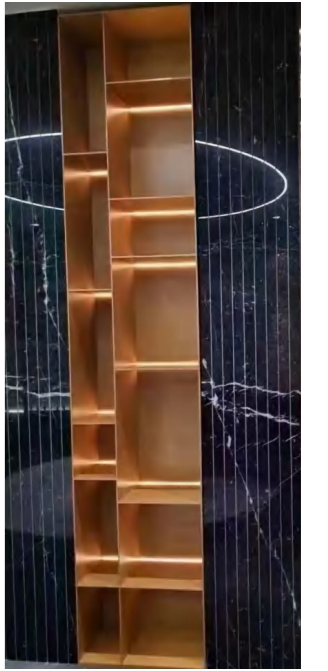


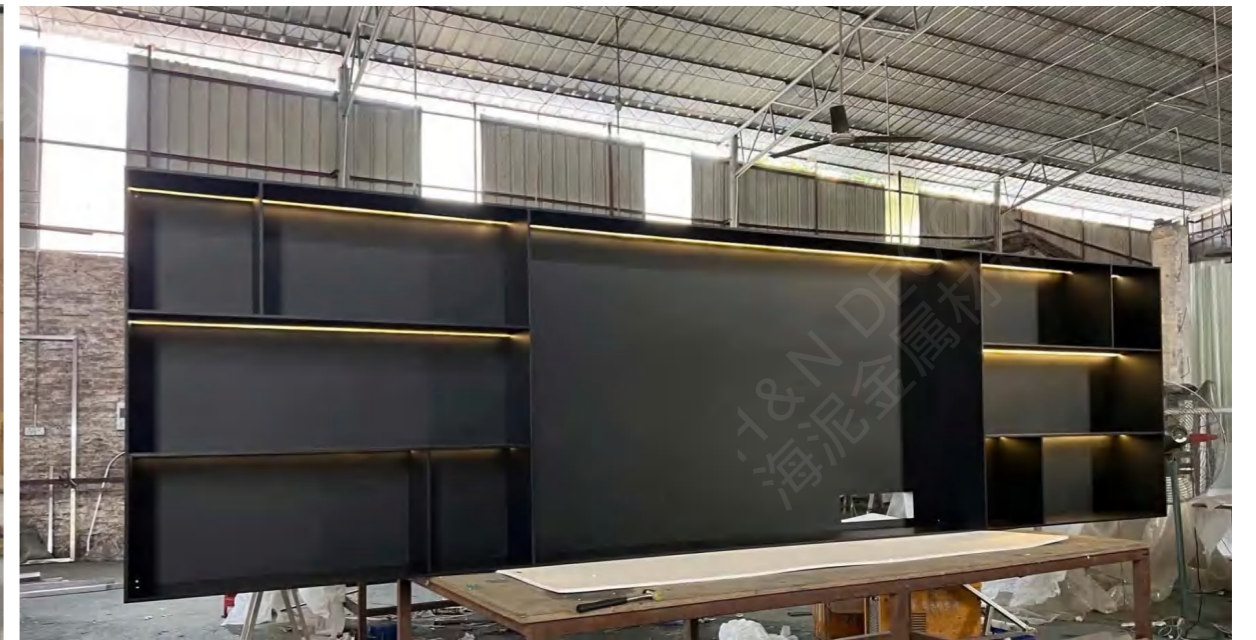


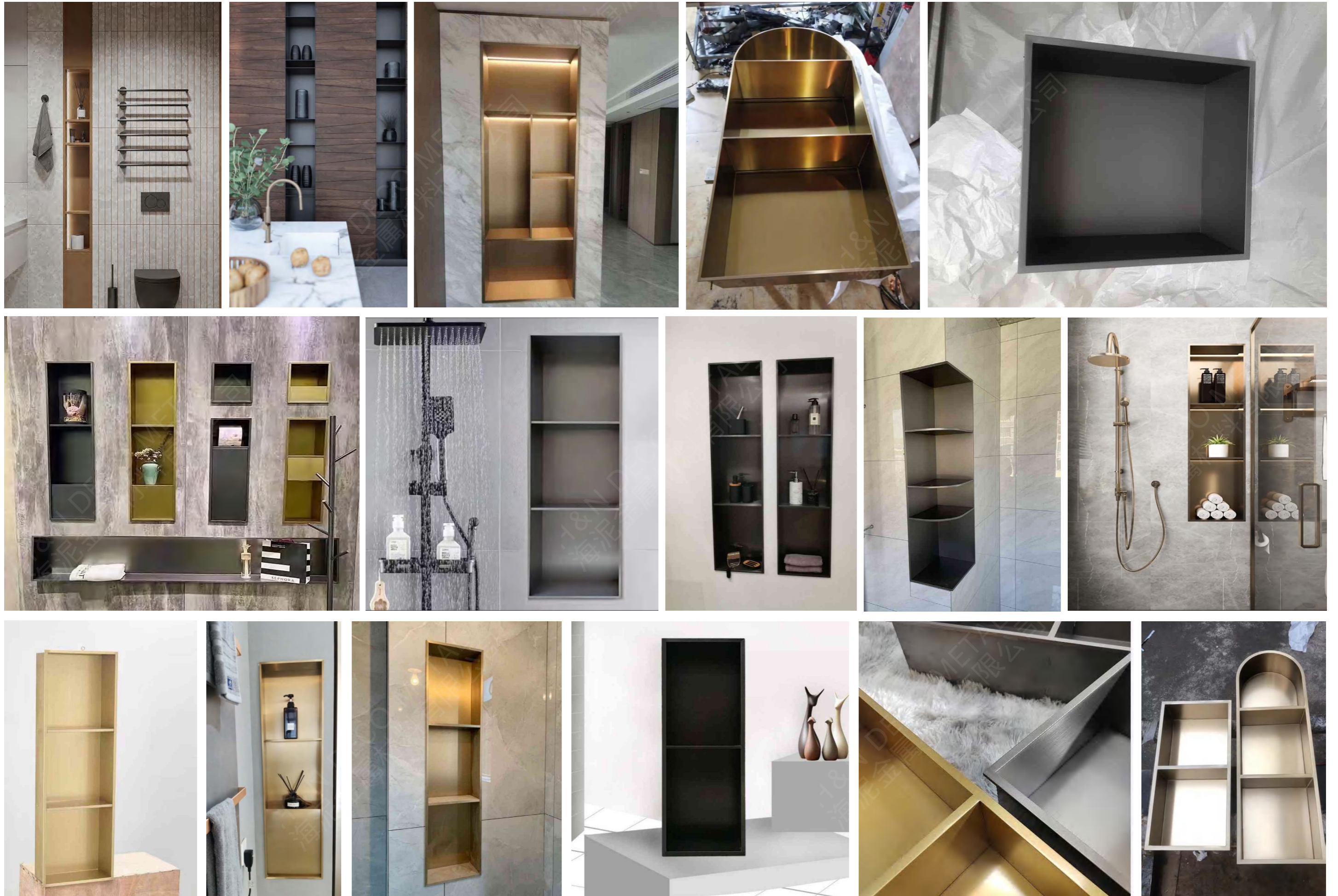
# Products

Cladding\Ceiling\Dividers\Cabinet\Door\Strip\Logo\custom



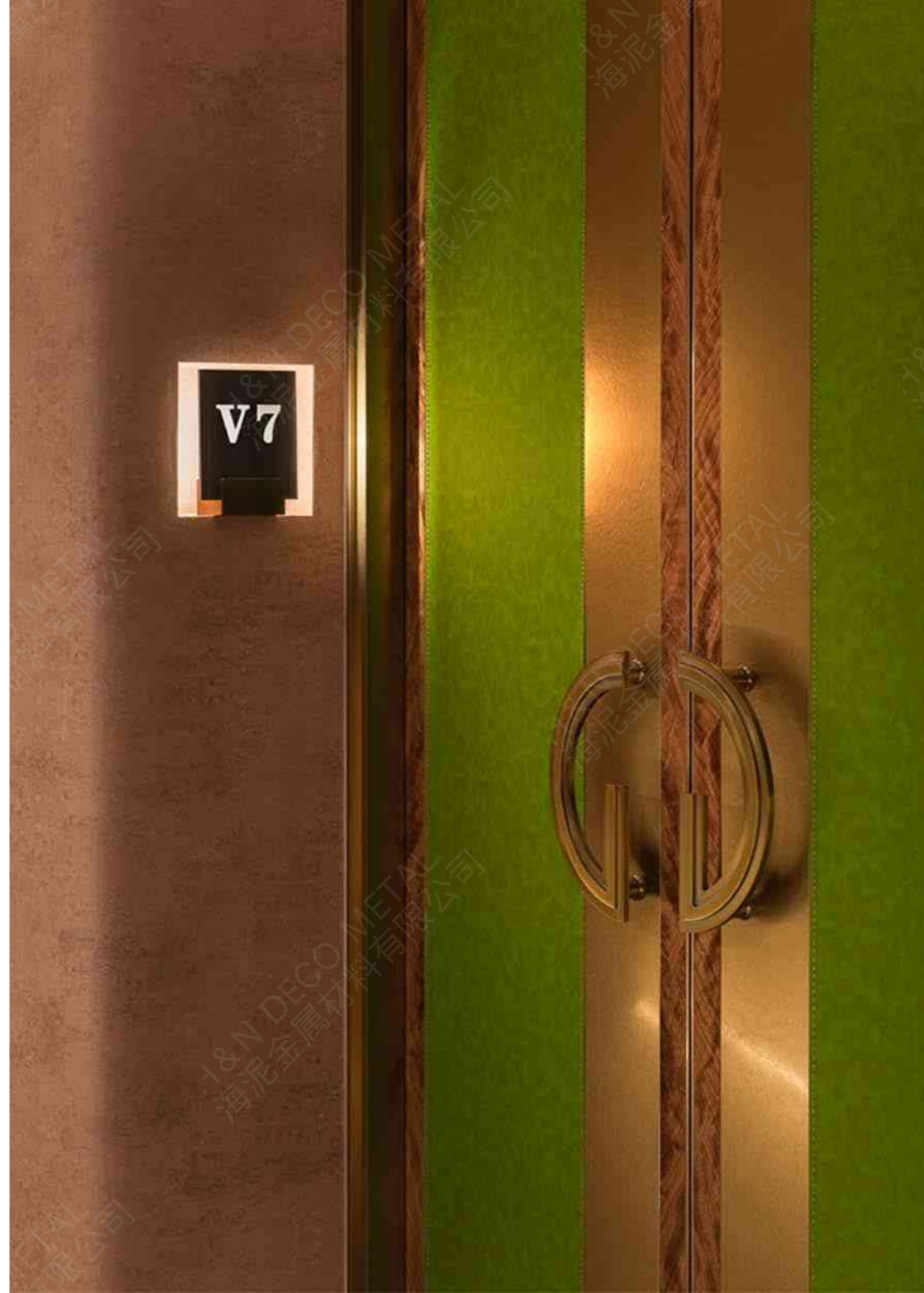






# Products

Cladding\Ceiling\Dividers\Cabinet\Door\Strip\Logo\custom





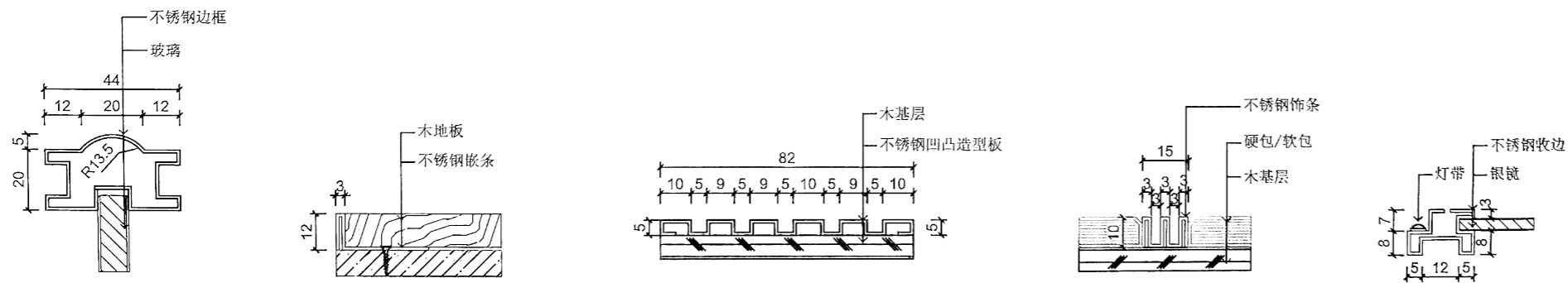
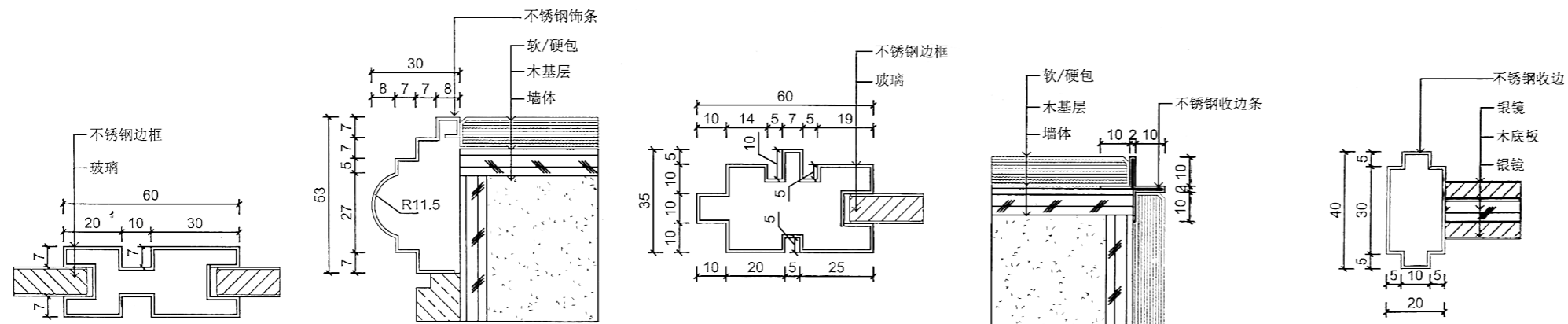
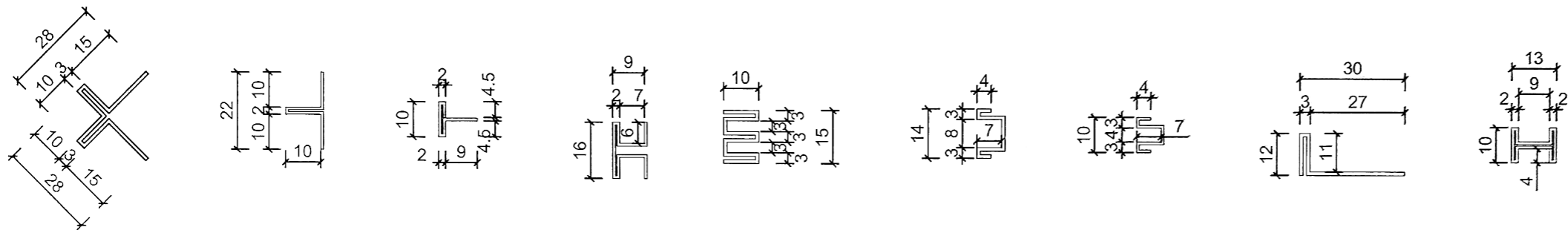
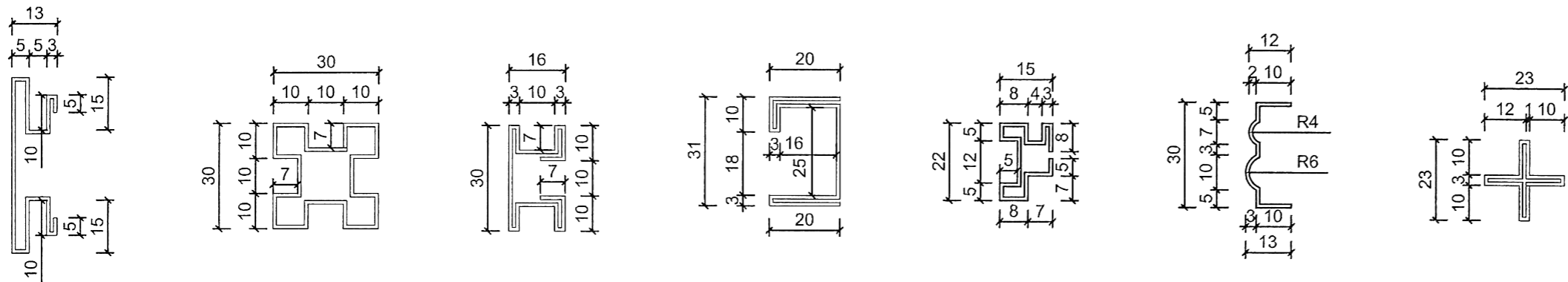
# Products

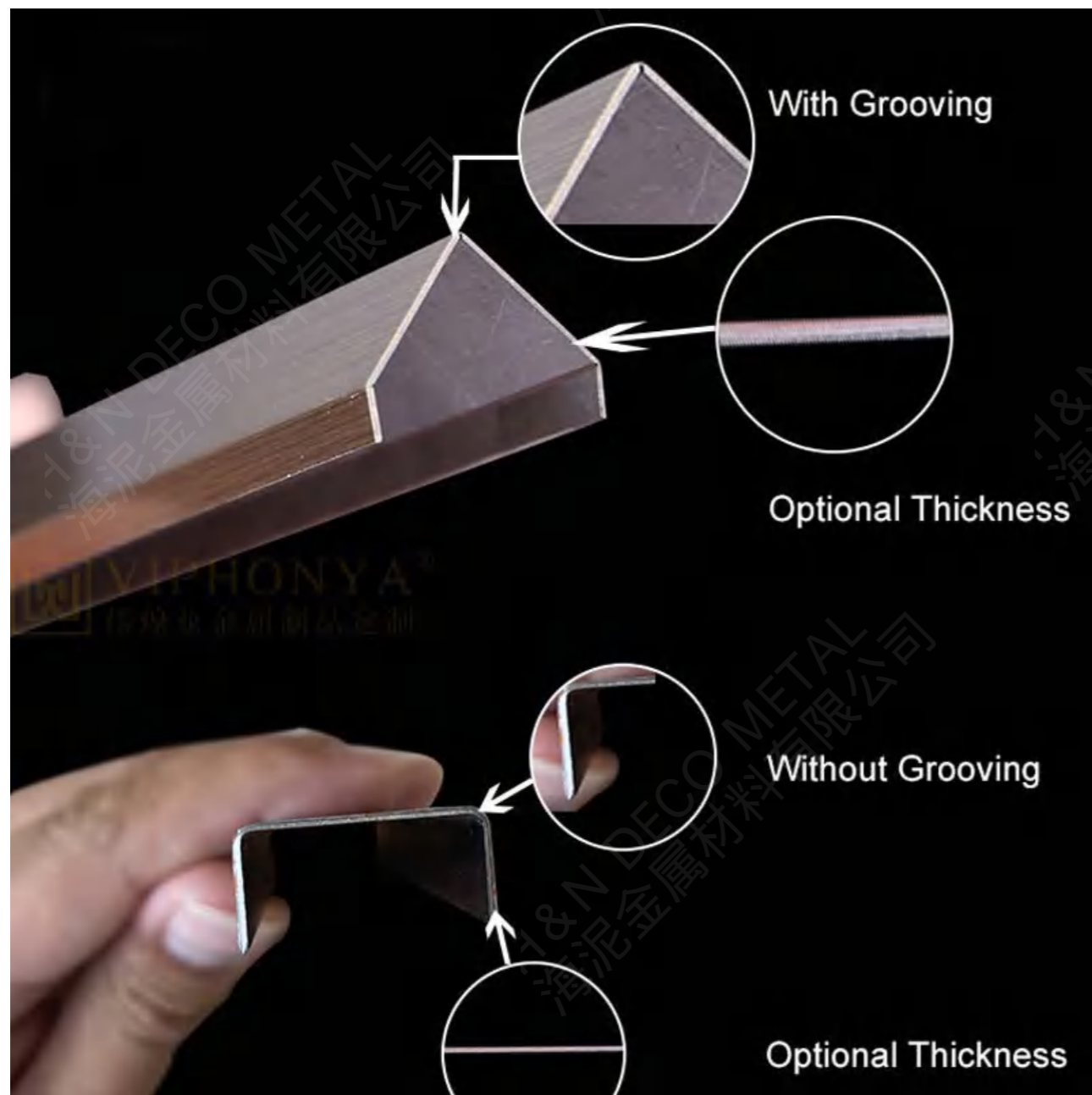
Cladding\Ceiling\Dividers\Cabinet\Door\Strip\Logo\custom

# Application Furniture Inlay



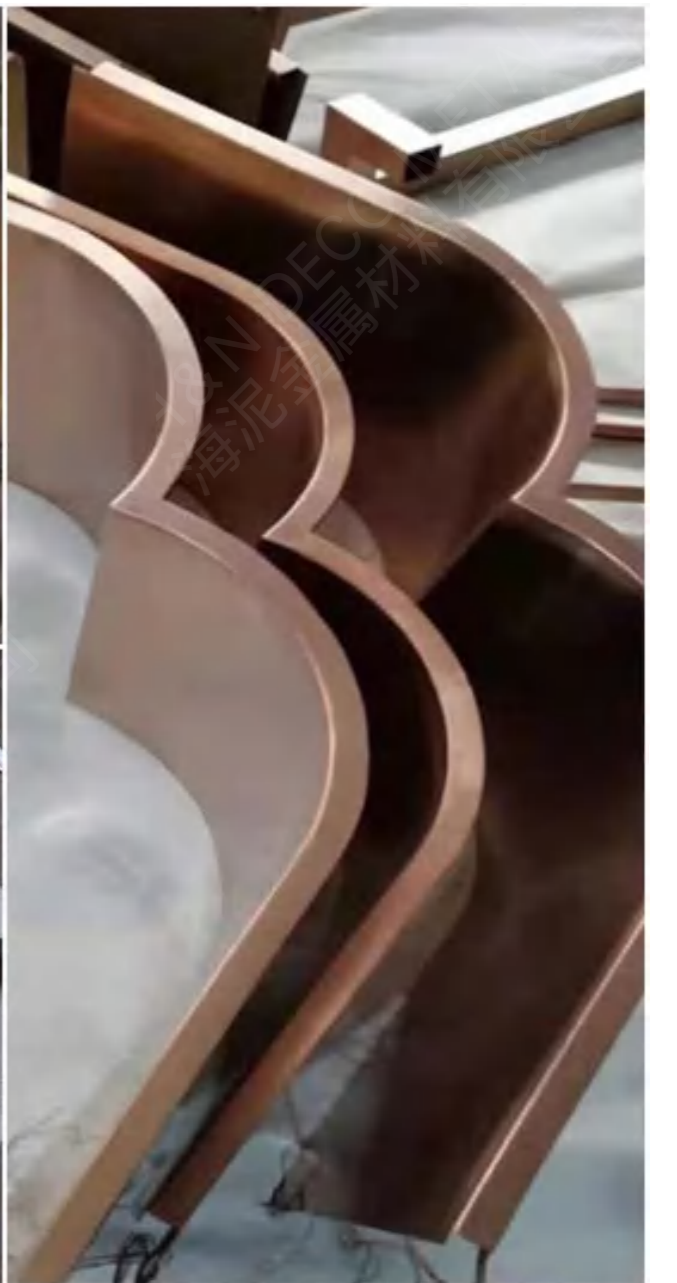
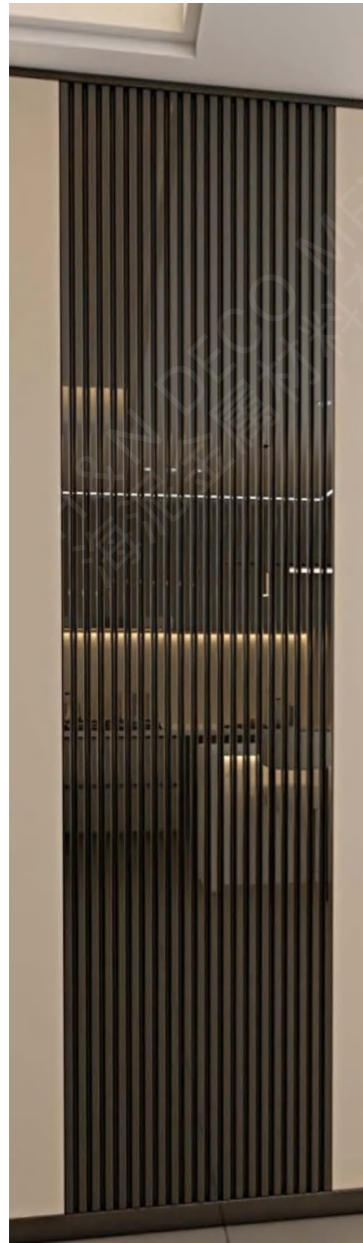
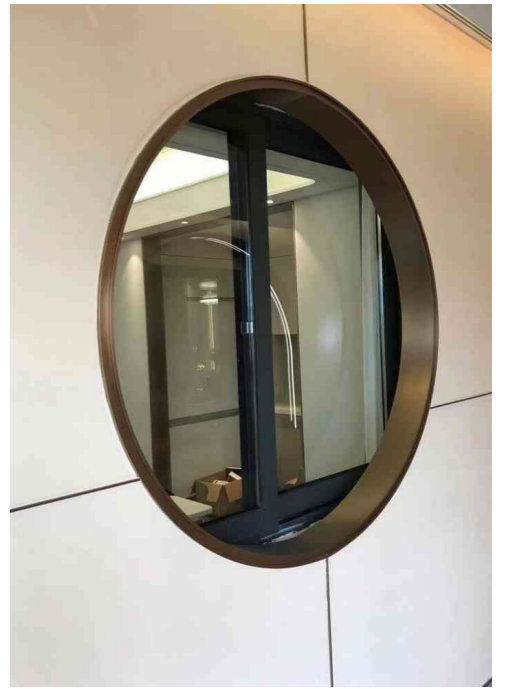
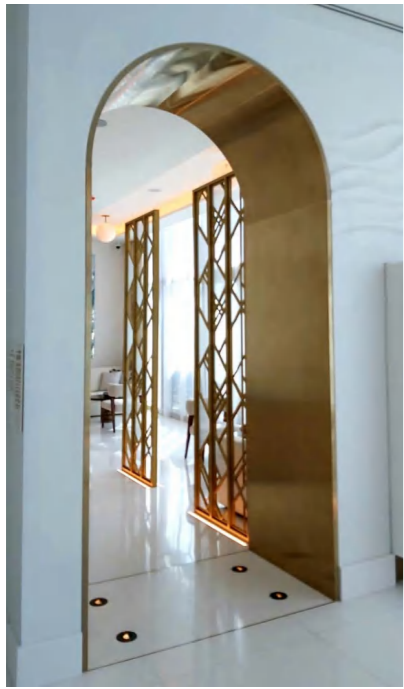






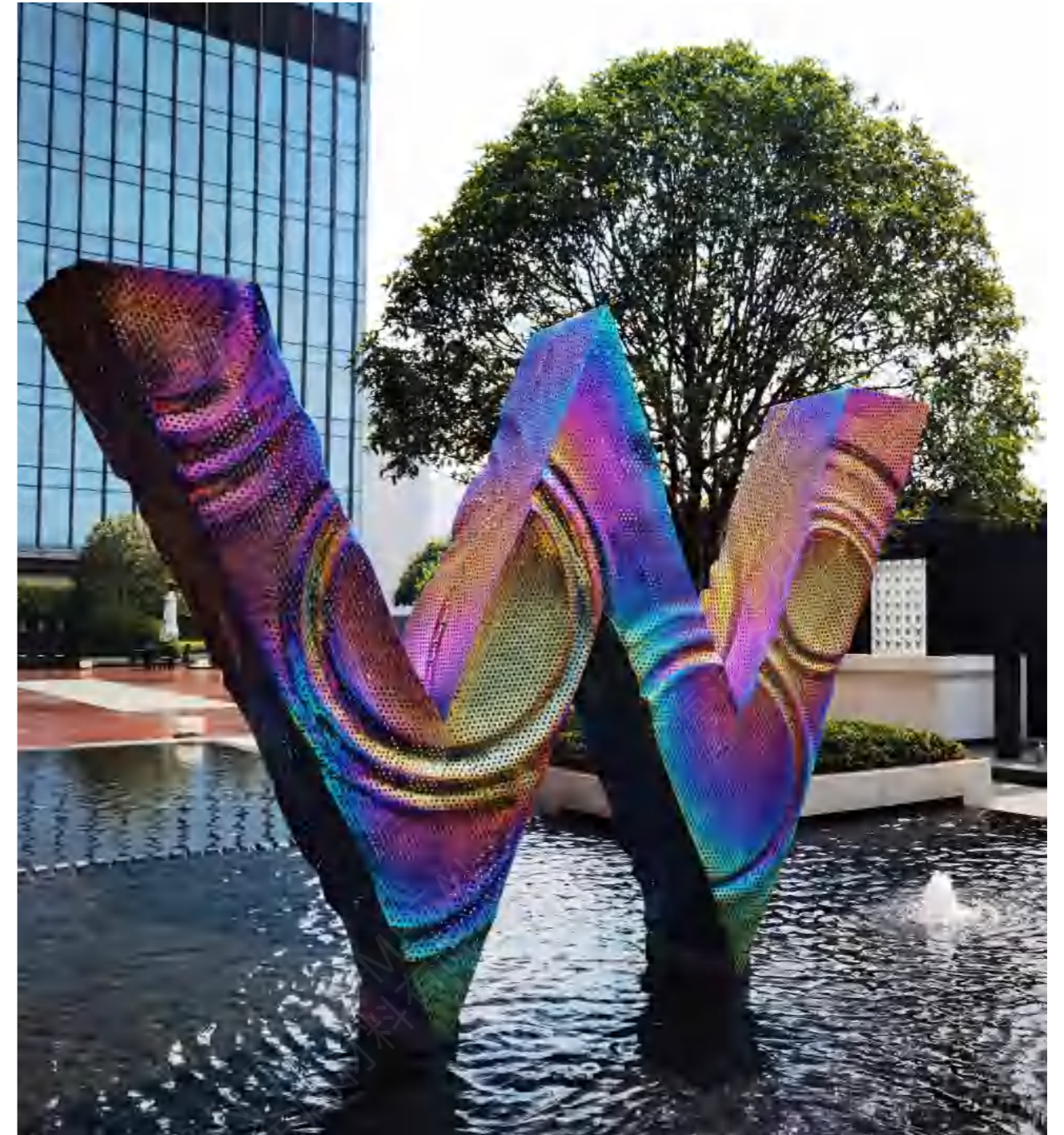


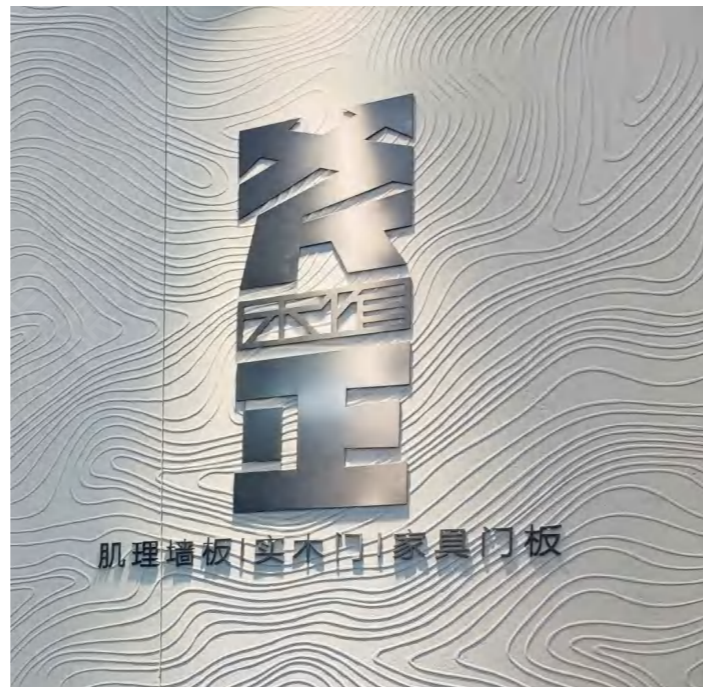




# Products

Cladding\Ceiling\Dividers\Cabinet\Door\Strip\Logo\custom





# Custom-made Service

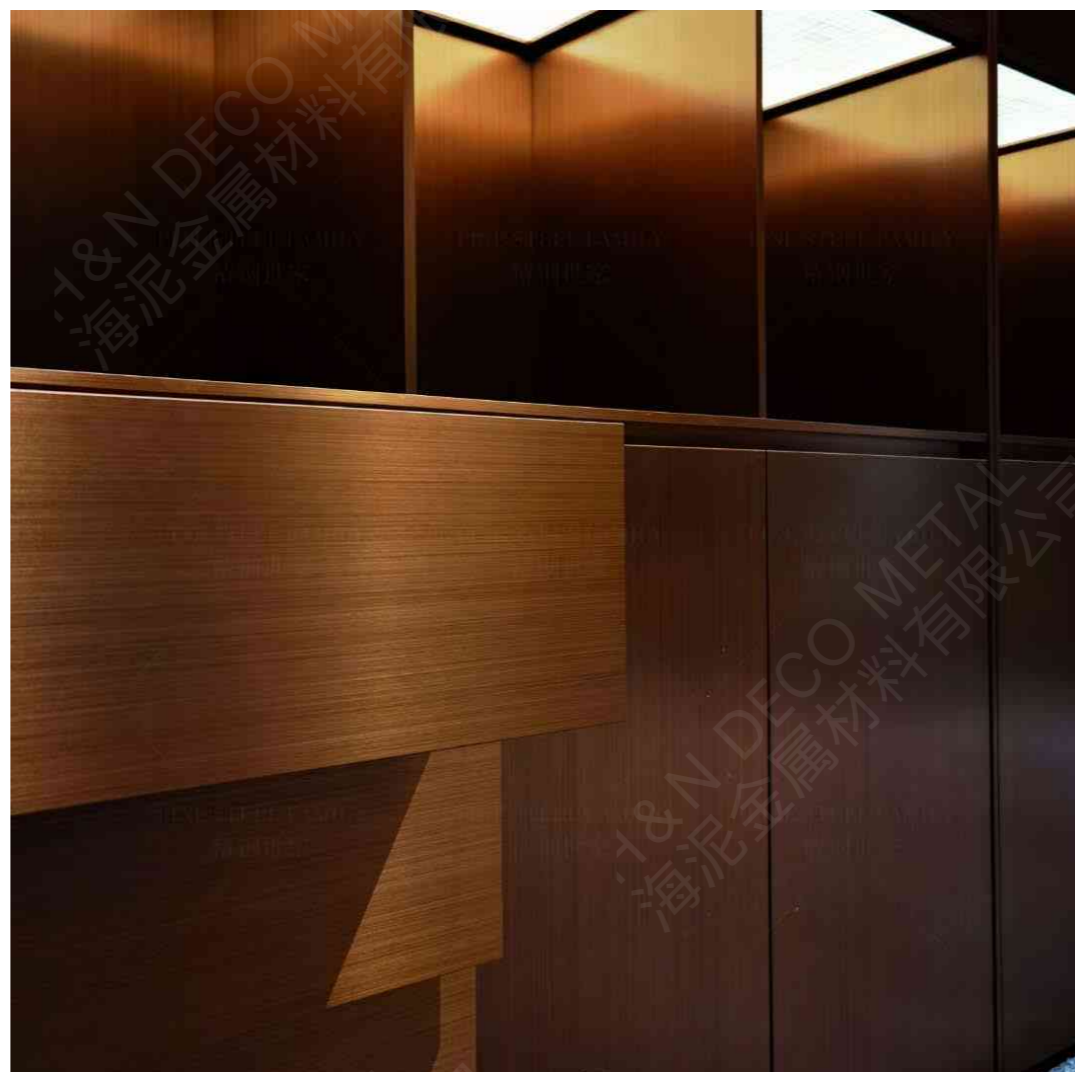
Metalwork fabrication process:  
Laser cutting / Welding / PVDcoating/Fabrication / Assembling Stations

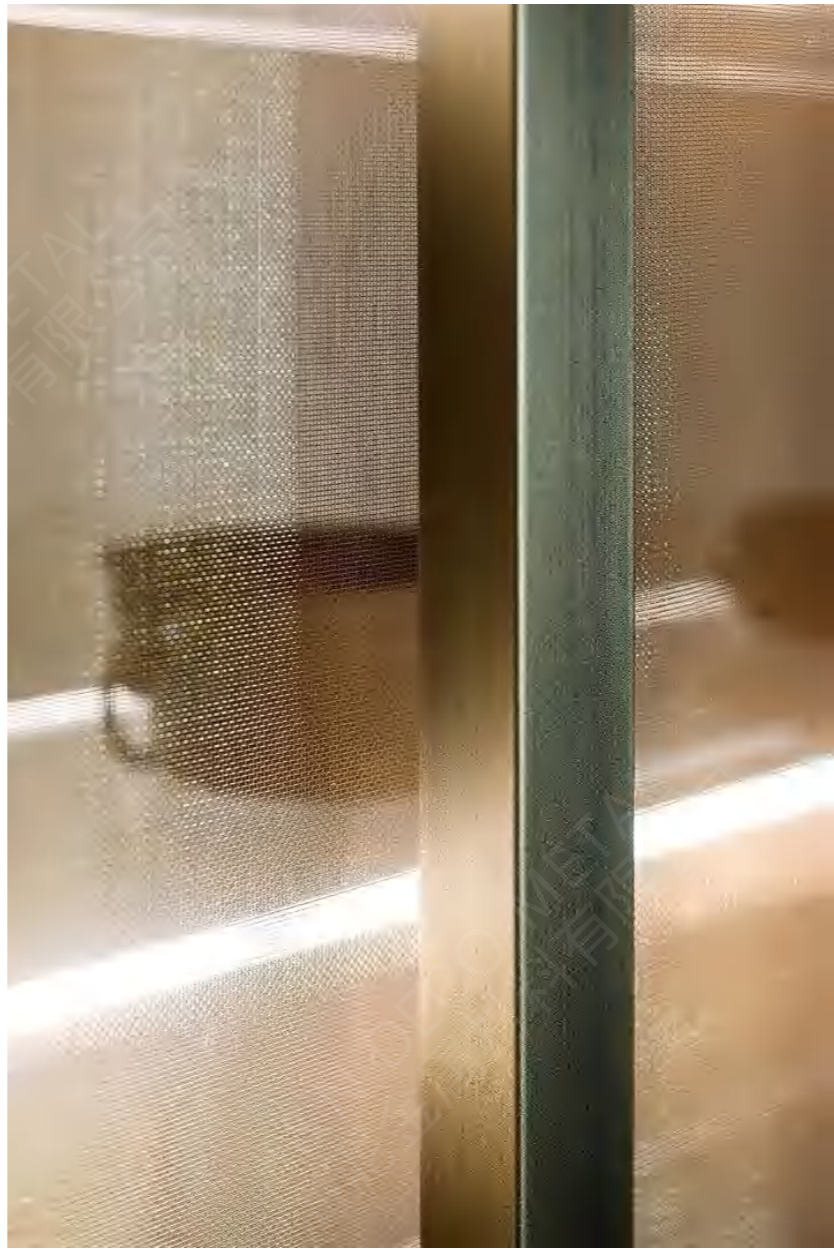
We have the capabilities to bring your creative vision to life. Quality materials and products that are more unique in design, craft, and execution than any other metals on the market.

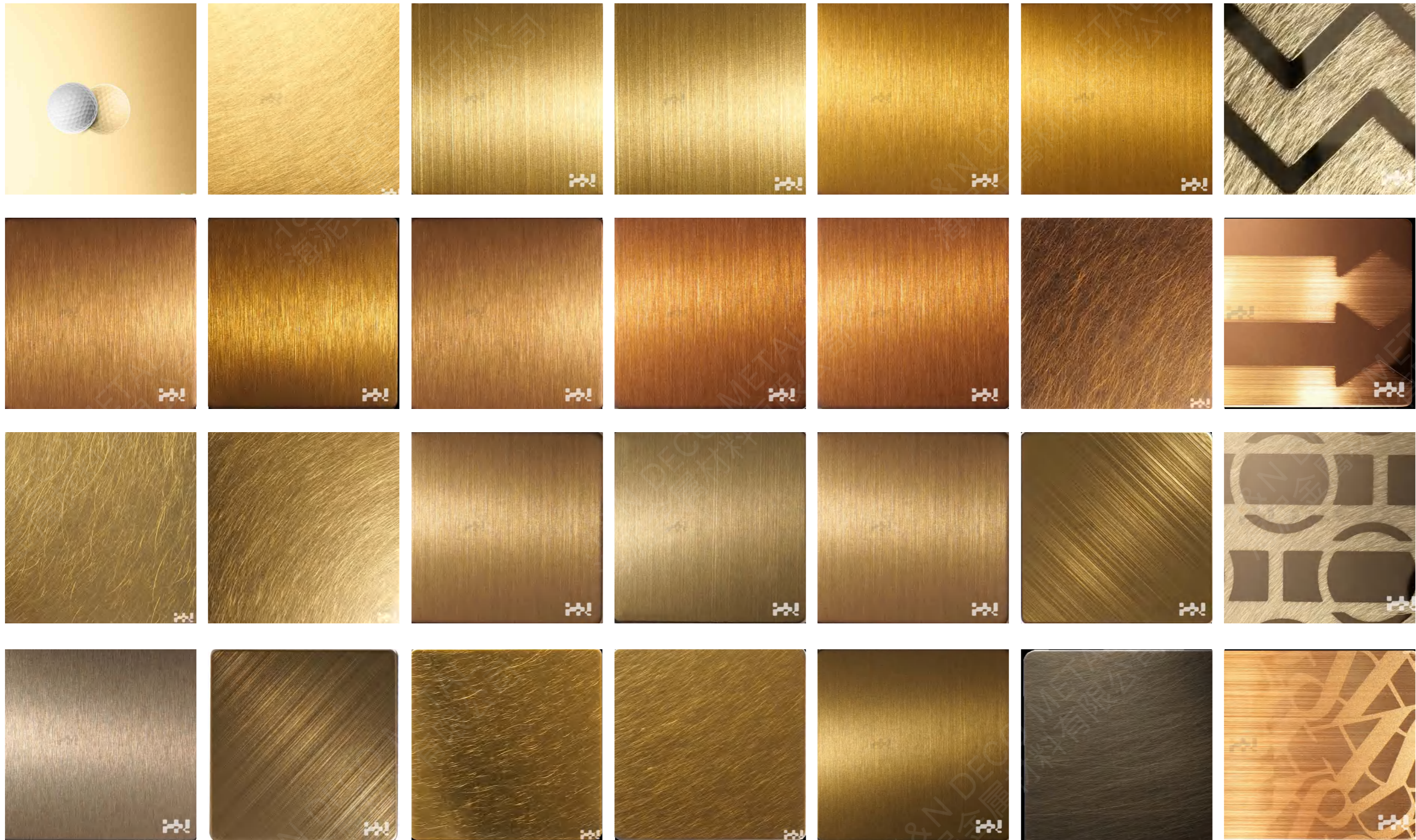


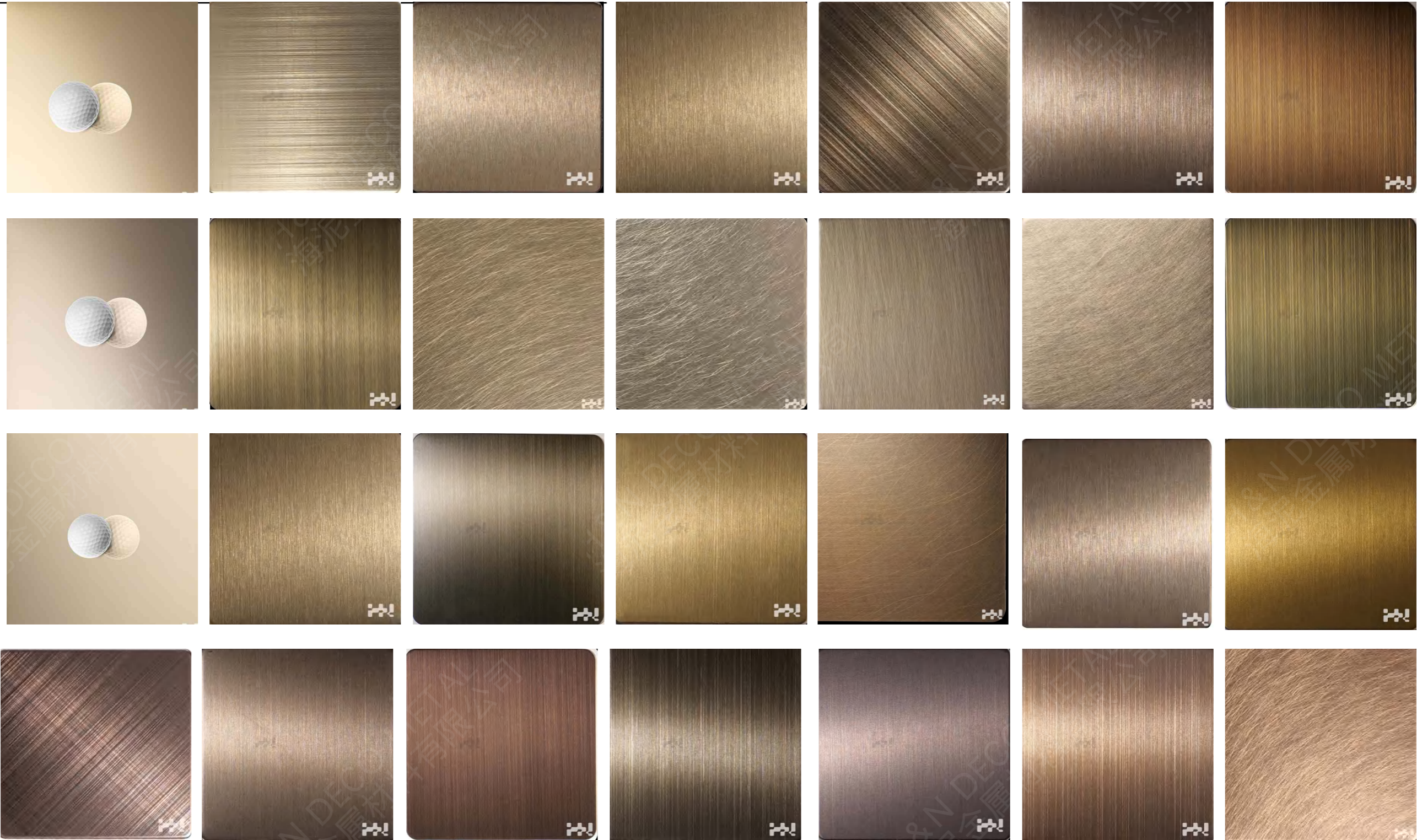




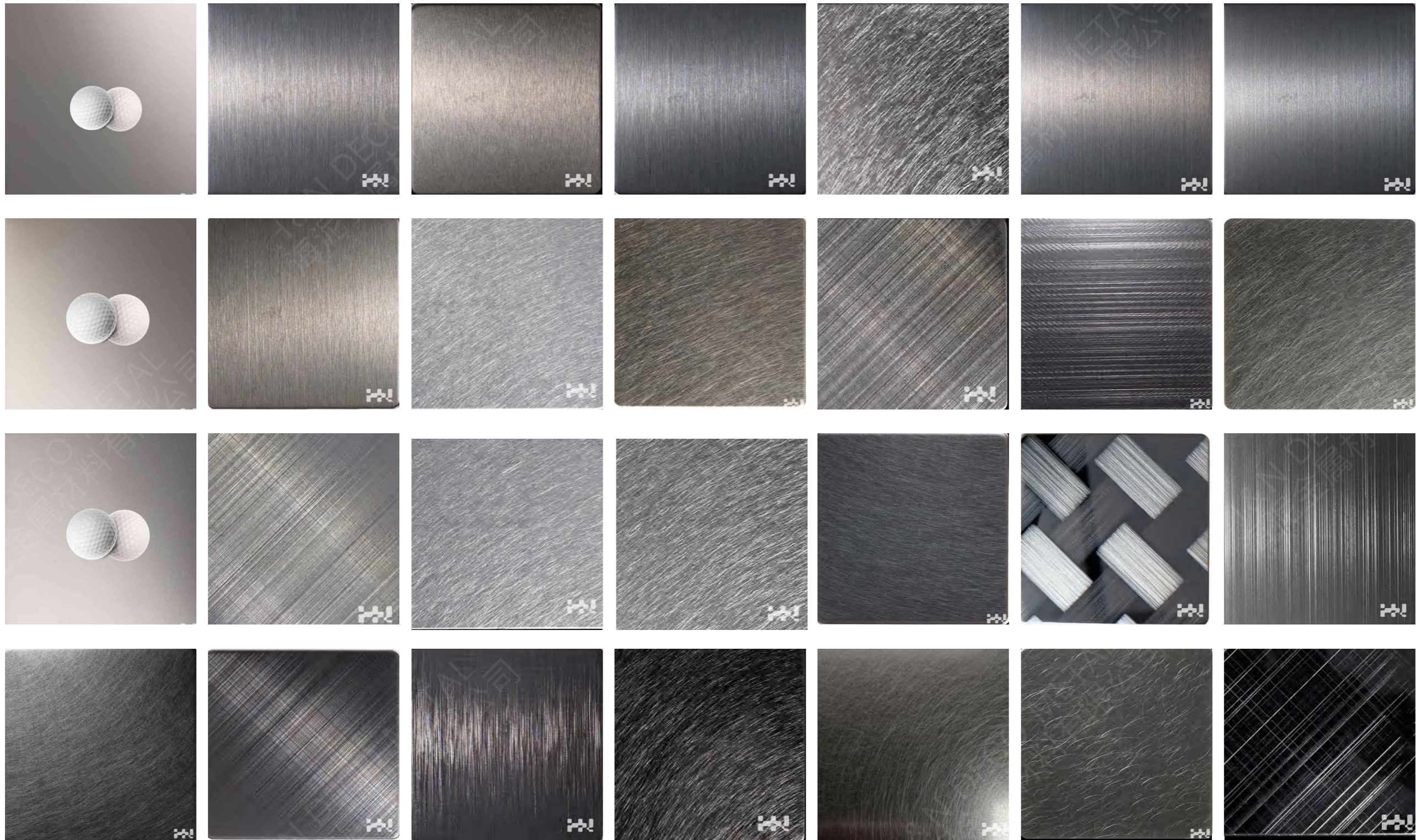


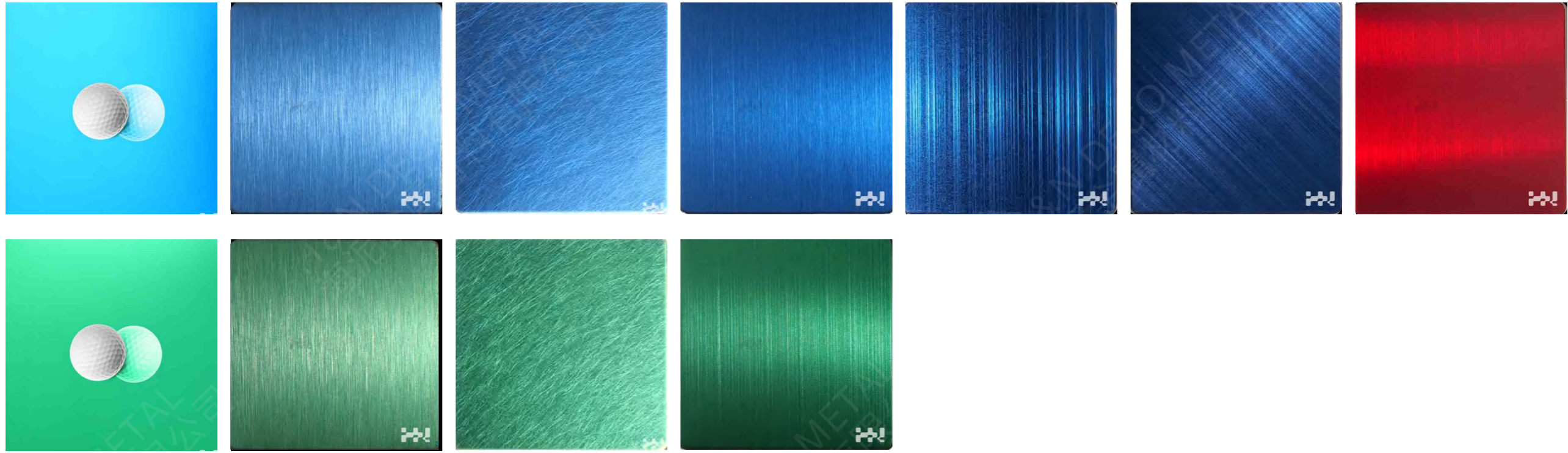








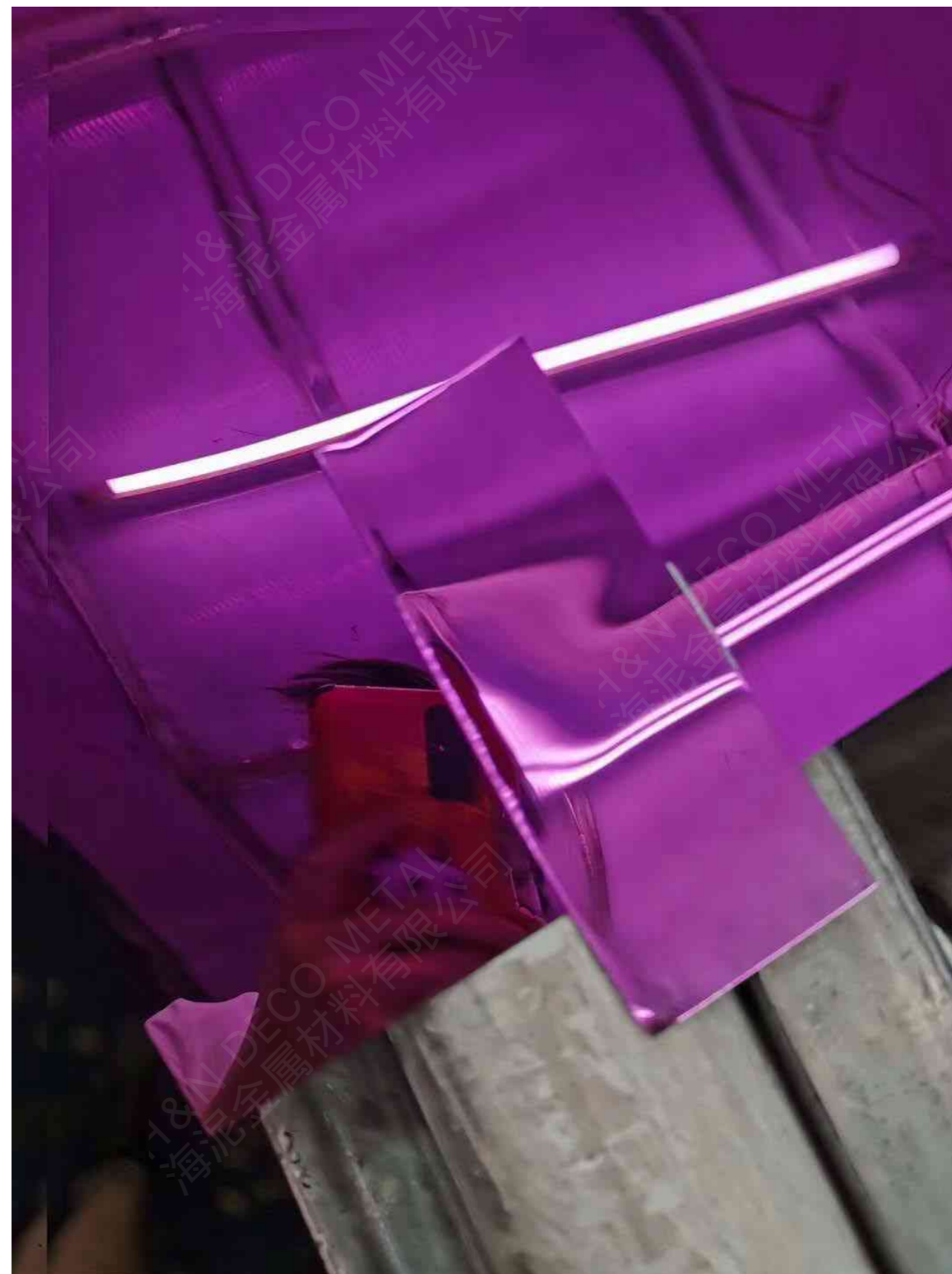






# Material Custom-made Service

Already have a pattern in mind? Don't worry. We can customize according to your sample. We have rich experience in customizing materials with more than 90% similarity





# Package&Delivery

## Package details:

- 1) First layer by lasering PVC, second layer as China local black&white PVC.
- 2) Waterproof paper covered;
- 3) Thick wooden plates to cover;
- 4) Metal pallet for LCL to avoid damage, and full wooden pallets with covers for FCL

## Marking and Loading:

PVC marking with goods details onto every sheet, marked by stickers for every single pallet, loaded as 20" container, FCL and LCL provided

Port:Foshan port

product	standard product	customized product
Lead time(days)	5-10 days	To be negotiated



# Cleaning&Maintenance

## How to clean stainless steel panel?

Surface condition	Cleaning method
When it is easily erased such as dust	Wash with soap, mild detergent or warm water
Label and protective film	Wipe with warm water and mild detergent and use adhesive or alcohol or organic solvent
Fat, oil and grease contamination	After wiping it with a soft cloth or paper, wash it with a neutral detergent or ammonia solution or a special cleaning agent.
Attach bleach and various acids	Immediately wash with water, soak in ammonia or sodium bicarbonate solution, and then wash with neutral detergent or warm water.
Carbonized organic material,carbon adhesion	Soak in a hot neutral detergent or ammonia solution before washing, and use a mild abrasive detergent
Fingerprint	Wipe with a soft cloth using alcohol or an organic solvent (ether, benzene) and wash with water
Rainbow pattern	It is caused by excessive use of detergent or oil, and is washed with warm water and neutral detergent.
Weld heat discoloration	After washing with 10% nitric acid solution or hydrofluoric acid, neutralize with ammonia or sodium bicarbonate solution and wash with water
Rust generated by surface contaminants	Use oxalic acid, sulfuric acid, nitric acid solution (10%) or abrasive detergent
Residual adhesive of protective film	Gently wipe with alcohol, benzene, acetone, thinner, etc.

Special Note: For problems with non-stainless steel products such as colour plates, please try the above method in an inconspicuous area or in a small area first, and if there is an effect on the colour plating on the surface of the plate. If there is an effect on the surface of the colour plate, then stop cleaning and use as appropriate!



# BROCHURE 2023